


# Anti-Neurogenin 1/NEUROG1 antibody ab66498

★☆☆☆☆ **1 Abreviews** **5 References** 画像数 **2**

### 製品の概要

|          |   |
|----------|---|
| 製品名      | Anti-Neurogenin 1/NEUROG1 antibody  |
| 製品の詳細    | Rabbit polyclonal to Neurogenin 1/NEUROG1   |
| 由来種      | Rabbit  |
| アプリケーション | <b>適用あり:</b> IHC-P, ICC/IF  |
| 種交差性     | 交差種: Human<br>交差が予測される動物種: Mouse   |
| 免疫原      | Synthetic peptide corresponding to Human Neurogenin 1/NEUROG1 (C terminal).<br>Database link: <a href="#">Q92886</a>  |
| 特記事項     | <p>The Life Science industry has been in the grips of a reproducibility crisis for a number of years. Abcam is leading the way in addressing this with our range of recombinant monoclonal antibodies and knockout edited cell lines for gold-standard validation. Please check that this product meets your needs before purchasing.</p> <p>If you have any questions, special requirements or concerns, please send us an inquiry and/or contact our Support team ahead of purchase. Recommended alternatives for this product can be found below, along with publications, customer reviews and Q&amp;As</p> |

### 製品の特性

|        |  |
|--------|--|
| 製品の状態  | Liquid   |
| 保存方法   | Shipped at 4°C. Store at +4°C short term (1-2 weeks). Upon delivery aliquot. Store at -20°C or -80°C. Avoid freeze / thaw cycle. |
| バッファー  | Constituent: Whole serum   |
| 精製度    | Whole antiserum  |
| ポリ/モノ  | ポリクローナル  |
| アイソタイプ | IgG  |

### アプリケーション

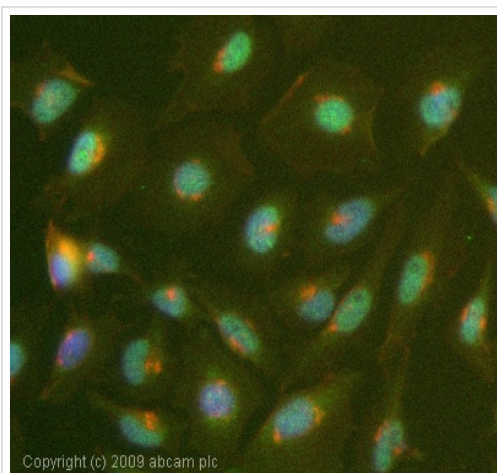
**The Abpromise guarantee**      **Abpromise保証は、次のテスト済みアプリケーションにおけるab66498の使用に適用されます**  
アプリケーションノートには、推奨の開始希釈率がありますが、適切な希釈率につきましてはご検討ください。

| アプリケーション | Abreviews | 特記事項    |
|----------|-----------|---------|
| IHC-P    |           | 1/1000. |
| ICC/IF   |           | 1/1000. |

## ターゲット情報

|       |  |
|-------|--|
| 機能    | Appears to mediate neuronal differentiation.           |
| 組織特異性 | Expression restricted to the embryonic nervous system. |
| 配列類似性 | Contains 1 basic helix-loop-helix (bHLH) domain.       |
| 細胞内局在 | Nucleus.   |

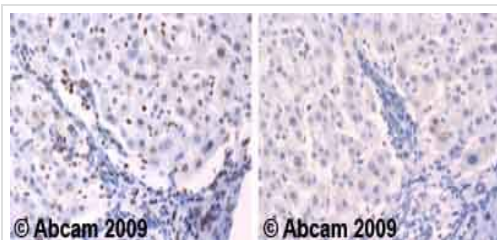
## 画像



Copyright (c) 2009 abcam plc

Immunocytochemistry/ Immunofluorescence - Anti-Neurogenin 1/NEUROG1 antibody (ab66498)

ICC/IF image of ab66498 stained HeLa cells. The cells were 4% formaldehyde fixed (10 min) and then incubated in 1%BSA / 10% normal goat serum / 0.3M glycine in 0.1% PBS-Tween for 1h to permeabilise the cells and block non-specific protein-protein interactions. The cells were then incubated with the antibody (ab66498, 1/1000 dilution) overnight at +4°C. The secondary antibody (green) was Alexa Fluor® 488 goat anti-rabbit IgG (H+L) used at a 1/1000 dilution for 1h. Alexa Fluor® 594 WGA was used to label plasma membranes (red) at a 1/200 dilution for 1h. DAPI was used to stain the cell nuclei (blue) at a concentration of 1.43µM.



© Abcam 2009

© Abcam 2009

Immunohistochemistry (Formalin/PFA-fixed paraffin-embedded sections) - Anti-Neurogenin 1/NEUROG1 antibody (ab66498)

Ab66498 staining human normal liver. Staining is localised to the nucleus.

Left panel: with primary antibody diluted 1:1000. Right panel: isotype control.

Sections were stained using an automated system DAKO Autostainer Plus , at room temperature. Sections were rehydrated and antigen retrieved with the DAKO 3-in-1 antigen retrieval buffer citrate pH 6.0 in a DAKO PT Link. Slides were peroxidase blocked in 3% H<sub>2</sub>O<sub>2</sub> in methanol for 10 minutes. They were then blocked with Dako Protein block for 10 minutes (containing casein 0.25% in PBS) then incubated with primary antibody for 20 minutes and detected with Dako Envision Flex amplification kit for 30 minutes.

Colorimetric detection was completed with diaminobenzidine for 5 minutes. Slides were counterstained with Haematoxylin and coverslipped under DePeX. Please note that for manual staining we recommend to optimize the primary antibody concentration and incubation time (overnight incubation), and amplification may be required.

**Please note:** All products are "FOR RESEARCH USE ONLY. NOT FOR USE IN DIAGNOSTIC PROCEDURES"

### **Our Abpromise to you: Quality guaranteed and expert technical support**

---

- Replacement or refund for products not performing as stated on the datasheet
- Valid for 12 months from date of delivery
- Response to your inquiry within 24 hours
- We provide support in Chinese, English, French, German, Japanese and Spanish
- Extensive multi-media technical resources to help you
- We investigate all quality concerns to ensure our products perform to the highest standards

If the product does not perform as described on this datasheet, we will offer a refund or replacement. For full details of the Abpromise, please visit <https://www.abcam.co.jp/abpromise> or contact our technical team.

### **Terms and conditions**

---

- Guarantee only valid for products bought direct from Abcam or one of our authorized distributors