


### Anti-Neurofilament heavy polypeptide antibody [NF-01] ab7795

★★★★★ [5 Abreviews](#) [27 References](#) [画像数 2](#)

#### 製品の概要

製品名	Anti-Neurofilament heavy polypeptide antibody [NF-01]
製品の詳細	Mouse monoclonal [NF-01] to Neurofilament heavy polypeptide
由来種	Mouse
特異性	This antibody recognizes a phosphorylated epitope on heavy neurofilament protein (210 kDa) of various species.
アプリケーション	<b>適用あり:</b> IHC-P, Flow Cyt
種交差性	<b>交差種:</b> Human <b>交差が予測される動物種:</b> a wide range of other species, Mammals 
免疫原	Full length native protein (purified) corresponding to Pig Neurofilament heavy polypeptide. A pellet of pig brain cold-stable proteins after depolymerization of microtubules.
特記事項	<p>The Life Science industry has been in the grips of a reproducibility crisis for a number of years. Abcam is leading the way in addressing this with our range of recombinant monoclonal antibodies and knockout edited cell lines for gold-standard validation. Please check that this product meets your needs before purchasing.</p> <p>If you have any questions, special requirements or concerns, please send us an inquiry and/or contact our Support team ahead of purchase. Recommended alternatives for this product can be found below, along with publications, customer reviews and Q&amp;As</p>

#### 製品の特性

製品の状態	Liquid
保存方法	Shipped at 4°C. Store at +4°C short term (1-2 weeks). Upon delivery aliquot. Store at -20°C or -80°C. Avoid freeze / thaw cycle.
バッファー	pH: 7.40 Preservative: 0.097% Sodium azide Constituent: PBS
精製度	Protein A purified
特記事項(精製)	>95 % pure (by PAGE)
ポリ/モノ	モノクローナル
クローン名	NF-01

アイソタイプ IgG1  
軽鎖の種類 unknown

## アプリケーション

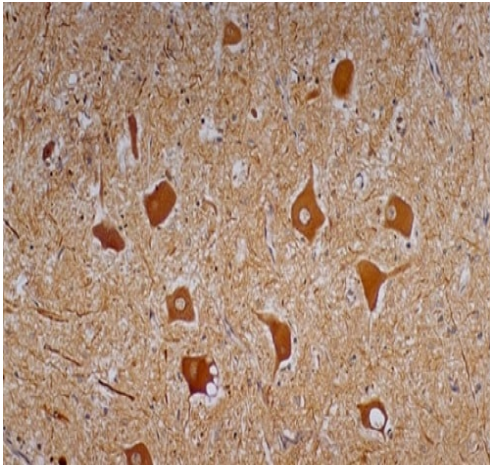
**The Abpromise guarantee** Abpromise保証は、 次のテスト済みアプリケーションにおけるab7795の使用に適用されます  
アプリケーションノートには、推奨の開始希釈率がありますが、適切な希釈率につきましてはご検討ください。

アプリケーション	Abreviews	特記事項
IHC-P	★★★★★ (1)	1/5 - 1/10.
Flow Cyt		Use 1µg for 10 <sup>6</sup> cells. <b>ab170190</b> - Mouse monoclonal IgG1, is suitable for use as an isotype control with this antibody.

## ターゲット情報

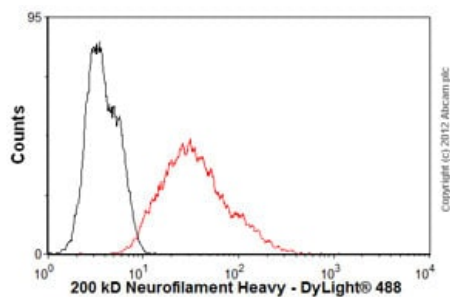
機能	Neurofilaments usually contain three intermediate filament proteins: L, M, and H which are involved in the maintenance of neuronal caliber. NF-H has an important function in mature axons that is not subserved by the two smaller NF proteins.
関連疾患	Defects in NEFH are a cause of susceptibility to amyotrophic lateral sclerosis (ALS) [MIM:105400]. ALS is a neurodegenerative disorder affecting upper and lower motor neurons, and resulting in fatal paralysis. Sensory abnormalities are absent. Death usually occurs within 2 to 5 years. The etiology is likely to be multifactorial, involving both genetic and environmental factors.
配列類似性	Belongs to the intermediate filament family.
翻訳後修飾	There are a number of repeats of the tripeptide K-S-P, NFH is phosphorylated on a number of the serines in this motif. It is thought that phosphorylation of NFH results in the formation of interfilament cross bridges that are important in the maintenance of axonal caliber. Phosphorylation seems to play a major role in the functioning of the larger neurofilament polypeptides (NF-M and NF-H), the levels of phosphorylation being altered developmentally and coincident with a change in the neurofilament function. Phosphorylated in the Head and Rod regions by the PKC kinase PKN1, leading to inhibit polymerization.

## 画像



Immunohistochemical analysis of paraffin-embedded human cerebellum tissue sections labelling Neurofilament heavy polypeptide protein with ab7795 at 5  $\mu$ L.

Immunohistochemistry (Formalin/PFA-fixed paraffin-embedded sections) - Anti-Neurofilament heavy polypeptide antibody [NF-01] (ab7795)



Flow Cytometry - Anti-Neurofilament heavy polypeptide antibody [NF-01] (ab7795)

Overlay histogram showing SH-SY5Y cells stained with ab7795 (red line). The cells were fixed with 4% paraformaldehyde (10 min) and then permeabilized with 0.1% PBS-Tween for 20 min. The cells were then incubated in 1x PBS / 10% normal goat serum / 0.3M glycine to block non-specific protein-protein interactions followed by the antibody (ab7795, 1 $\mu$ g/1x10<sup>6</sup> cells) for 30 min at 22°C. The secondary antibody used was a goat **anti-mouse DyLight® 488** (IgG; H+L) (**ab96879**) at 1/500 dilution for 30 min at 22°C. Isotype control antibody (black line) was mouse IgG1 [ICIGG1] (**ab91353**, 2 $\mu$ g/1x10<sup>6</sup> cells) used under the same conditions. Acquisition of >5,000 events was performed. This antibody gave a positive signal in SH-SY5Y cells fixed with 80% methanol (5 min)/permeabilized with 0.1% PBS-Tween for 20 min used under the same conditions.

**Please note:** All products are "FOR RESEARCH USE ONLY. NOT FOR USE IN DIAGNOSTIC PROCEDURES"

**Our Abpromise to you: Quality guaranteed and expert technical support**

- Replacement or refund for products not performing as stated on the datasheet
- Valid for 12 months from date of delivery
- Response to your inquiry within 24 hours
- We provide support in Chinese, English, French, German, Japanese and Spanish
- Extensive multi-media technical resources to help you
- We investigate all quality concerns to ensure our products perform to the highest standards

If the product does not perform as described on this datasheet, we will offer a refund or replacement. For full details of the Abpromise, please visit <https://www.abcam.co.jp/abpromise> or contact our technical team.

#### **Terms and conditions**

---

- Guarantee only valid for products bought direct from Abcam or one of our authorized distributors