


Anti-NeuroD1 antibody [EPR4008] ab109224

リコンビナント RabMAb

★★★★★ [1 Abreviews](#) [13 References](#) [画像数 3](#)

製品の概要

製品名	Anti-NeuroD1 antibody [EPR4008]
製品の詳細	Rabbit monoclonal [EPR4008] to NeuroD1
由来種	Rabbit
アプリケーション	適用あり: ICC/IF, WB 適用なし: Flow Cyt or IHC-P
種交差性	交差種: Mouse, Human 交差が予測される動物種: Rat 
免疫原	Synthetic peptide. This information is proprietary to Abcam and/or its suppliers.
ポジティブ・コントロール	WB: Y79 and fetal brain lysates; ICC/IF: Mouse primary neuron cells.
特記事項	This product is a recombinant monoclonal antibody, which offers several advantages including: <ul style="list-style-type: none">- High batch-to-batch consistency and reproducibility- Improved sensitivity and specificity- Long-term security of supply- Animal-free production For more information see here . Our RabMAb [®] technology is a patented hybridoma-based technology for making rabbit monoclonal antibodies. For details on our patents, please refer to RabMAb[®] patents .

製品の特性

製品の状態	Liquid
保存方法	Shipped at 4°C. Store at +4°C short term (1-2 weeks). Upon delivery aliquot. Store at -20°C long term. Avoid freeze / thaw cycle.
バッファー	pH: 7.20 Preservative: 0.01% Sodium azide Constituents: 59% PBS, 40% Glycerol (glycerin, glycerine), 0.5% BSA
精製度	Protein A purified
ポリ/モノ	モノクローナル
クローン名	EPR4008

アプリケーション

The Abpromise guarantee **Abpromise保証は、次のテスト済みアプリケーションにおけるab109224の使用に適用されず**
アプリケーションノートには、推奨の開始希釈率がありますが、適切な希釈率につきましてはご検討ください。

アプリケーション	Abreviews	特記事項
ICC/IF		1/200.
WB	★★★★★ (1)	1/1000 - 1/10000. Detects a band of approximately 47 kDa (predicted molecular weight: 40 kDa).

追加情報

Is unsuitable for Flow Cyt or IHC-P.

ターゲット情報

機能

Differentiation factor required for dendrite morphogenesis and maintenance in the cerebellar cortex. Transcriptional activator. Binds to the insulin gene E-box.

関連疾患

Defects in NEUROD1 are the cause of maturity-onset diabetes of the young type 6 (MODY6) [MIM:606394]. MODY is a form of diabetes that is characterized by an autosomal dominant mode of inheritance, onset in childhood or early adulthood (usually before 25 years of age), a primary defect in insulin secretion and frequent insulin-independence at the beginning of the disease.

配列類似性

Contains 1 basic helix-loop-helix (bHLH) domain.

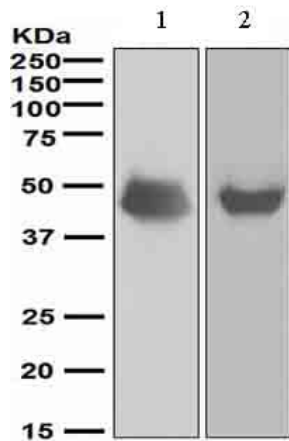
翻訳後修飾

Phosphorylated. In islet cells, phosphorylated on Ser-274 upon glucose stimulation; which may be required for nuclear localization. In activated neurons, phosphorylated on Ser-335; which promotes dendritic growth.

細胞内局在

Cytoplasm. Nucleus.

画像



Western blot - Anti-NeuroD1 antibody [EPR4008] (ab109224)

All lanes : Anti-NeuroD1 antibody [EPR4008] (ab109224) at 1/1000 dilution

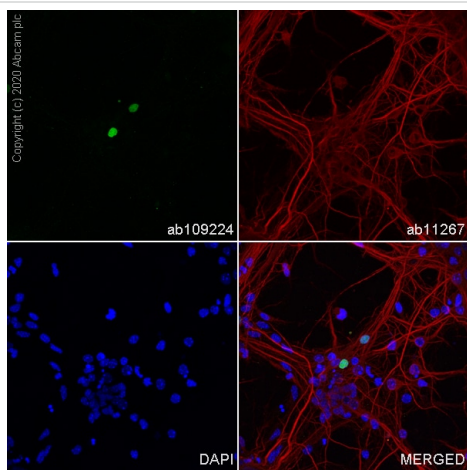
Lane 1 : Y79 lysates

Lane 2 : Fetal brain lysates

Lysates/proteins at 10 µg per lane.

Predicted band size: 40 kDa

Observed band size: 47 kDa



Immunocytochemistry/ Immunofluorescence - Anti-NeuroD1 antibody [EPR4008] (ab109224)

Immunofluorescent analysis of 4% Paraformaldehyde-fixed, 0.1% TritonX-100 permeabilized mouse primary neuron cells labelling NeuroD1 with ab109224 at 1/200 dilution, followed by **ab150077** Goat Anti-Rabbit IgG H&L (Alexa Fluor® 488) antibody at 1/1000 dilution (2 µg/mL) (Green). Confocal image showing nuclear staining in a little of mouse primary neuron cell. Confocal scanning Z step was set as 0.3 µm followed by image processing with maximum Z projection. **ab11267** Anti-MAP2 mouse monoclonal antibody was used to counterstain tubulin at 1/500 dilution (4 µg/mL) followed by **ab150120** Goat Anti-Mouse IgG H&L (Alexa Fluor® 594) at 1/1000 dilution (2 µg/mL) (Red). The nuclear counterstain was DAPI (Blue).

Why choose a recombinant antibody?

- Research with confidence**
Consistent and reproducible results
- Long-term and scalable supply**
Recombinant technology
- Success from the first experiment**
Confirmed specificity
- Ethical standards compliant**
Animal-free production

Anti-NeuroD1 antibody [EPR4008] (ab109224)

Our Abpromise to you: Quality guaranteed and expert technical support

- Replacement or refund for products not performing as stated on the datasheet
- Valid for 12 months from date of delivery
- Response to your inquiry within 24 hours

- We provide support in Chinese, English, French, German, Japanese and Spanish
- Extensive multi-media technical resources to help you
- We investigate all quality concerns to ensure our products perform to the highest standards

If the product does not perform as described on this datasheet, we will offer a refund or replacement. For full details of the Abpromise, please visit <https://www.abcam.co.jp/abpromise> or contact our technical team.

Terms and conditions

- Guarantee only valid for products bought direct from Abcam or one of our authorized distributors