


Anti-NET1 antibody ab113202

2 References [画像数 3](#)

製品の概要

製品名	Anti-NET1 antibody
製品の詳細	Rabbit polyclonal to NET1
由来種	Rabbit
アプリケーション	適用あり: WB, IP
種交差性	交差種: Human 交差が予測される動物種: Chimpanzee, Gorilla 
免疫原	Synthetic peptide, corresponding to a region within amino acids 546-596 of Human NET1 (NP_001040625).
ポジティブ・コントロール	WB: Jurkat whole cell lysate and HEK293T whole cell lysate.
特記事項	<p>The Life Science industry has been in the grips of a reproducibility crisis for a number of years. Abcam is leading the way in addressing this with our range of recombinant monoclonal antibodies and knockout edited cell lines for gold-standard validation. Please check that this product meets your needs before purchasing.</p> <p>If you have any questions, special requirements or concerns, please send us an inquiry and/or contact our Support team ahead of purchase. Recommended alternatives for this product can be found below, along with publications, customer reviews and Q&As</p>

製品の特性

製品の状態	Liquid
保存方法	Shipped at 4°C. Upon delivery aliquot and store at -20°C. Avoid freeze / thaw cycles.
バッファー	<p>pH: 7</p> <p>Preservative: 0.09% Sodium azide</p> <p>Constituent: 99% Tris citrate/phosphate</p>
精製度	pH 7 to 8
ポリ/モノ	Immunogen affinity purified
アイソタイプ	ポリクローナル
	IgG

アプリケーション

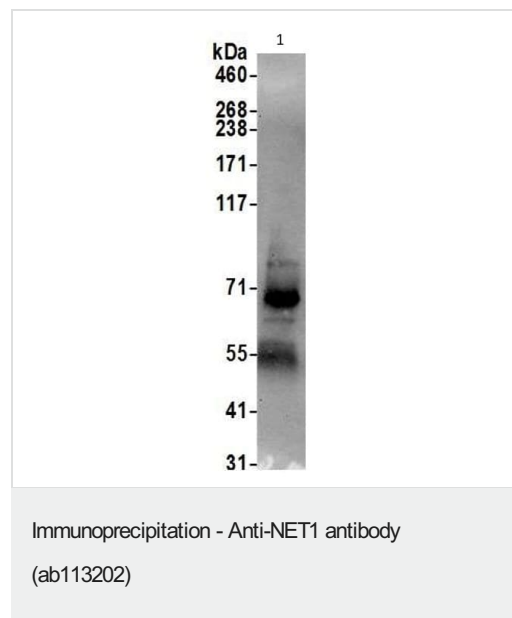
The Abpromise guarantee Abpromise保証は、 次のテスト済みアプリケーションにおけるab113202の使用に適用されます
アプリケーションノートには、推奨の開始希釈率がありますが、適切な希釈率につきましてはご検討ください。

アプリケーション	Abreviews	特記事項
WB		Use a concentration of 0.1 - 1 µg/ml. Predicted molecular weight: 62 kDa.
IP		Use at 2-10 µg/mg of lysate.

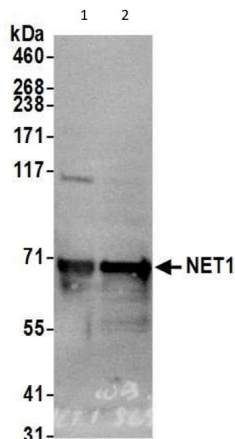
ターゲット情報

機能	Acts as guanine nucleotide exchange factor (GEF) for RhoA GTPase. May be involved in activation of the SAPK/JNK pathway Stimulates genotoxic stress-induced RHOB activity in breast cancer cells leading to their cell death.
組織特異性	Widely expressed.
配列類似性	Contains 1 DH (DBL-homology) domain. Contains 1 PH domain.
細胞内局在	Cytoplasm. Nucleus.

画像



Immunoprecipitation of NET1 (6 µg of antibody per mg of HEK-293T cell lysate; 20% of the IP loaded). Anti-Net 1 antibody (ab113202) used at 1 µg/ml for western blot. Detection: Chemiluminescence with exposure time of 30 seconds.



Western blot - Anti-NET1 antibody (ab113202)

All lanes : Anti-NET1 antibody (ab113202) at 0.1 µg/ml

Lane 1 : HEK-293T (Human epithelial cell line from embryonic kidney transformed with large T antigen) whole cell lysate

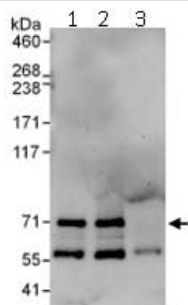
Lane 2 : Jurkat (Human T cell leukemia cell line from peripheral blood) whole cell lysate

Lysates/proteins at 50 µg per lane.

Predicted band size: 62 kDa

Exposure time: 30 seconds

Detected by chemiluminescence.



Immunoprecipitation - Anti-NET1 antibody
(ab113202)

Immunoprecipitation of NET1 (6 µg of antibody per mg of Jurkat cell lysate; 20% of the IP loaded). Lane 1- Immunoprecipitation with an anti-Net1 antibody that recognizes an upstream epitope; Lane 2- Immunoprecipitation with ab113202; Lane 3- Immunoprecipitation with IgG control. Anti-Net 1 antibody (ab113202) used at 1 µg/ml for western blot. Detection: Chemiluminescence with exposure time of 3 min.

Please note: All products are "FOR RESEARCH USE ONLY. NOT FOR USE IN DIAGNOSTIC PROCEDURES"

Our Abpromise to you: Quality guaranteed and expert technical support

- Replacement or refund for products not performing as stated on the datasheet
- Valid for 12 months from date of delivery
- Response to your inquiry within 24 hours
- We provide support in Chinese, English, French, German, Japanese and Spanish
- Extensive multi-media technical resources to help you

- We investigate all quality concerns to ensure our products perform to the highest standards

If the product does not perform as described on this datasheet, we will offer a refund or replacement. For full details of the Abpromise, please visit <https://www.abcam.co.jp/abpromise> or contact our technical team.

Terms and conditions

- Guarantee only valid for products bought direct from Abcam or one of our authorized distributors