


Anti-Nephrin (phospho Y1176 + Y1193) antibody [EPTPG1] ab80299

RabMAb

9 References [画像数 3](#)

製品の概要

製品名	Anti-Nephrin (phospho Y1176 + Y1193) antibody [EPTPG1]
製品の詳細	Rabbit monoclonal [EPTPG1] to Nephrin (phospho Y1176 + Y1193)
由来種	Rabbit
特異性	This antibody detects Nephrin when either tyrosines 1176 or 1193 are phosphorylated, but does not detect non-phosphorylated Nephrin.
アプリケーション	適用あり: WB, Dot blot
種交差性	交差種: Human 交差が予測される動物種: Mouse 
免疫原	Synthetic peptide within Mouse Nephrin (phospho Y1176 + Y1193). The exact sequence is proprietary.
ポジティブ・コントロール	Transfected HEK293T cells
特記事項	<p>Our RabMAb[®] technology is a patented hybridoma-based technology for making rabbit monoclonal antibodies. For details on our patents, please refer to RabMAb[®] patents.</p> <p>The Life Science industry has been in the grips of a reproducibility crisis for a number of years. Abcam is leading the way in addressing this with our range of recombinant monoclonal antibodies and knockout edited cell lines for gold-standard validation. Please check that this product meets your needs before purchasing.</p> <p>If you have any questions, special requirements or concerns, please send us an inquiry and/or contact our Support team ahead of purchase. Recommended alternatives for this product can be found below, along with publications, customer reviews and Q&As</p>

製品の特性

製品の状態	Liquid
保存方法	Shipped at 4°C. Upon delivery aliquot and store at -20°C. Avoid freeze / thaw cycles.
バッファー	pH: 7.2 Preservative: 0.05% Sodium azide Constituents: 0.1% BSA, 40% Glycerol (glycerin, glycerine), 9.85% Tris glycine, 50% Tissue

	culture supernatant
精製度	Protein A purified
ポリ/モノ	モノクローナル
クローン名	EPTPG1
アイソタイプ	IgG

アプリケーション

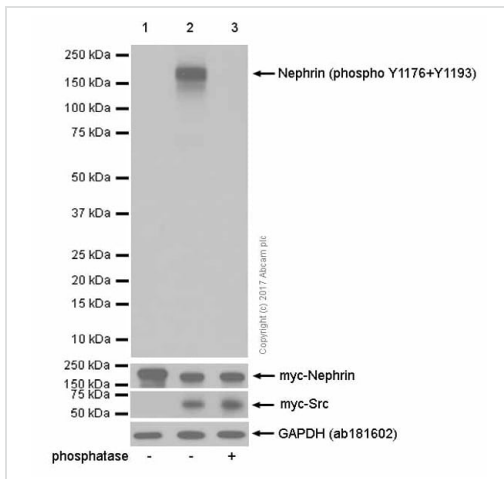
The Abpromise guarantee Abpromise保証は、次のテスト済みアプリケーションにおけるab80299の使用に適用されます
 アプリケーションノートには、推奨の開始希釈率がありますが、適切な希釈率につきましてはご検討ください。

アプリケーション	Abreviews	特記事項
WB		1/10000 - 1/50000. Detects a band of approximately 138, 180 kDa (predicted molecular weight: 138 kDa).
Dot blot		Use at an assay dependent concentration.

ターゲット情報

機能	Seems to play a role in the development or function of the kidney glomerular filtration barrier. Regulates glomerular vascular permeability. May anchor the podocyte slit diaphragm to the actin cytoskeleton. Plays a role in skeletal muscle formation through regulation of myoblast fusion.
組織特異性	Specifically expressed in podocytes of kidney glomeruli.
関連疾患	Defects in NPHS1 are the cause of nephrotic syndrome type 1 (NPHS1) [MIM:256300]; also known as Finnish congenital nephrosis (CNF). A renal disease characterized clinically by proteinuria, hypoalbuminemia, hyperlipidemia, and edema. Kidney biopsies show non-specific histologic changes such as focal segmental glomerulosclerosis and diffuse mesangial proliferation. Some affected individuals have an inherited steroid-resistant form and progress to end-stage renal failure.
配列類似性	Belongs to the immunoglobulin superfamily. Contains 1 fibronectin type-III domain. Contains 8 Ig-like C2-type (immunoglobulin-like) domains.
発生段階	In 23-week-old embryo found in epithelial podocytes of the periphery of mature and developing glomeruli.
翻訳後修飾	Phosphorylated on tyrosine residues.
細胞内局在	Cell membrane. Predominantly located at podocyte slit diaphragm between podocyte foot processes. Also associated with podocyte apical plasma membrane.

画像



Western blot - Anti-Nephrin (phospho Y1176 + Y1193) antibody [EPTPG1] (ab80299)

All lanes : Anti-Nephrin (phospho Y1176 + Y1193) antibody [EPTPG1] (ab80299) at 1/1000 dilution

Lane 1 : HEK293T (human embryonic kidney epithelial cell) transfected with myc-tagged human Nephrin expression vector, whole cell lysate

Lane 2 : HEK293T (human embryonic kidney epithelial cell) transfected with myc-tagged human Nephrin and myc-tagged Src expression vector, whole cell lysate

Lane 3 : HEK293T (human embryonic kidney epithelial cell) transfected with myc-tagged human Nephrin and myc-tagged Src expression vector, whole cell lysate. Then the membrane was incubated with phosphatase.

Lysates/proteins at 15 µg per lane.

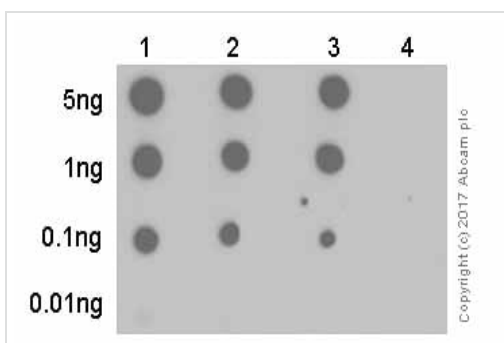
Secondary

All lanes : Goat Anti-Rabbit IgG H&L (HRP) ([ab97051](#)) at 1/100000 dilution

Predicted band size: 138 kDa

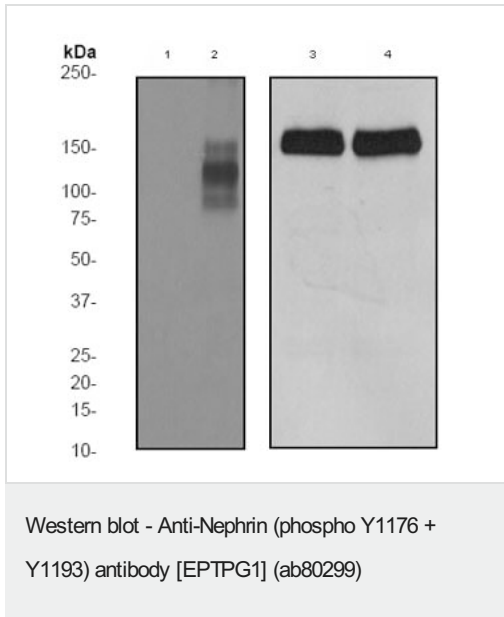
Observed band size: 170 kDa

Blocking and dilution buffer: 5% NFDm/TBST.



Dot Blot - Anti-Nephrin (phospho Y1176 + Y1193) antibody [EPTPG1] (ab80299)

Dot blot analysis of Nephrin (pY1176 + pY1193) phospho peptide (Lane 1), Nephrin (pY1176) phospho peptide (Lane 2), Nephrin (pY1193) phospho peptide (Lane 3) and Nephrin non-phospho peptide (Lane 4) labelling Nephrin (pY1176 + pY1193) with ab80299 at a dilution of 1/1000. A Goat Anti-Rabbit IgG, (H+L), Peroxidase conjugated ([ab97051](#)) was used as the secondary antibody at a dilution of 1/20,000. Blocking buffer: 5% NFDm/TBST. Dilution buffer: 5% NFDm /TBST.



All lanes : Anti-Nephrin (phospho Y1176 + Y1193) antibody [EPTPG1] (ab80299) at 1/50000 dilution

Lane 1 : HEK293T (human embryonic kidney epithelial cell) transfected with wild type CD 16/7 Nephrin expression vector, whole cell lysate

Lane 2 : HEK293T (human embryonic kidney epithelial cell) transfected with wild type CD 16/7 Nephrin and active tyrosine kinase (v-Src) expression vector, whole cell lysate

Lane 3 : HEK293T (human embryonic kidney epithelial cell) transfected with Y1176F mutant CD 16/7 Nephrin and active tyrosine kinase (v-Src) expression vector, whole cell lysate

Lane 4 : HEK293T (human embryonic kidney epithelial cell) transfected with Y1193F mutant CD 16/7 Nephrin and active tyrosine kinase (v-Src) expression vector, whole cell lysate

Secondary

All lanes : HRP labelled goat anti-rabbit at 1/2000 dilution

Predicted band size: 138 kDa

Observed band size: 138,180 kDa

Please note: All products are "FOR RESEARCH USE ONLY. NOT FOR USE IN DIAGNOSTIC PROCEDURES"

Our Abpromise to you: Quality guaranteed and expert technical support

- Replacement or refund for products not performing as stated on the datasheet
- Valid for 12 months from date of delivery
- Response to your inquiry within 24 hours
- We provide support in Chinese, English, French, German, Japanese and Spanish
- Extensive multi-media technical resources to help you
- We investigate all quality concerns to ensure our products perform to the highest standards

If the product does not perform as described on this datasheet, we will offer a refund or replacement. For full details of the Abpromise, please visit <https://www.abcam.co.jp/abpromise> or contact our technical team.

Terms and conditions

- Guarantee only valid for products bought direct from Abcam or one of our authorized distributors