


# Anti-NEK9 (phospho T210) antibody ab63553

**1 References** [画像数 3](#)

### 製品の概要

製品名	Anti-NEK9 (phospho T210) antibody
製品の詳細	Rabbit polyclonal to NEK9 (phospho T210)
由来種	Rabbit
アプリケーション	<b>適用あり:</b> WB, ICC/IF, IHC-P
種交差性	<b>交差種:</b> Human <b>交差が予測される動物種:</b> Mouse 
免疫原	Synthetic peptide corresponding to Human NEK9 (phospho T210). Database link: <a href="#">Q8TD19</a>
ポジティブ・コントロール	HeLa cells and extracts from HepG2 cells
特記事項	<p>The Life Science industry has been in the grips of a reproducibility crisis for a number of years. Abcam is leading the way in addressing this with our range of recombinant monoclonal antibodies and knockout edited cell lines for gold-standard validation. Please check that this product meets your needs before purchasing.</p> <p>If you have any questions, special requirements or concerns, please send us an inquiry and/or contact our Support team ahead of purchase. Recommended alternatives for this product can be found below, along with publications, customer reviews and Q&amp;As</p>

### 製品の特性

製品の状態	Liquid
保存方法	Shipped at 4°C. Store at -20°C. Stable for 12 months at -20°C.
バッファー	pH: 7.40 Preservative: 0.02% Sodium azide Constituents: PBS, 50% Glycerol (glycerin, glycerine), 0.87% Sodium chloride
精製度	Without Mg <sup>2+</sup> and Ca <sup>2+</sup>
特記事項 (精製)	Immunogen affinity purified
ポリ/モノ	The antibody was affinity-purified from rabbit antiserum by affinity-chromatography using epitope-specific phosphopeptide. The antibody against non-phosphopeptide was removed by chromatography using non-phosphopeptide corresponding to the phosphorylation site. ポリクローナル

アイソタイプ

IgG

アプリケーション

The Abpromise guarantee

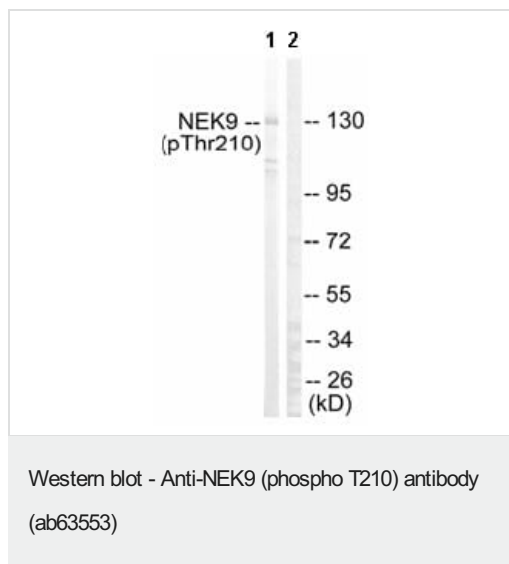
**Abpromise保証は、次のテスト済みアプリケーションにおけるab63553の使用に適用されます**  
アプリケーションノートには、推奨の開始希釈率がありますが、適切な希釈率につきましてはご検討ください。

アプリケーション	Abreviews	特記事項
WB		1/500 - 1/1000. Detects a band of approximately 130 kDa (predicted molecular weight: 107 kDa).
ICC/IF		1/500 - 1/1000.
IHC-P		Use at an assay dependent concentration.

ターゲット情報

機能	Pleiotropic regulator of mitotic progression, participating in the control of spindle dynamics and chromosome separation. Phosphorylates different histones, myelin basic protein, beta-casein, and BICD2. Phosphorylates histone H3 on serine and threonine residues and beta-casein on serine residues. Important for G1/S transition and S phase progression.
組織特異性	Most abundant in heart, liver, kidney and testis. Also expressed in smooth muscle cells and fibroblasts.
配列類似性	Belongs to the protein kinase superfamily. NEK Ser/Thr protein kinase family. NIMA subfamily. Contains 1 protein kinase domain. Contains 6 RCC1 repeats.
発生段階	Expression varied mildly across the cell cycle, with highest expression observed in G1 and stationary-phase cells.
ドメイン	Dimerizes through its coiled-coil domain.
翻訳後修飾	Autophosphorylated on serine and threonine residues. When complexed with FACT, exhibits markedly elevated phosphorylation on Thr-210. During mitosis, not phosphorylated on Thr-210. Phosphorylated by CDK1 in vitro.
細胞内局在	Cytoplasm. Nucleus.

画像



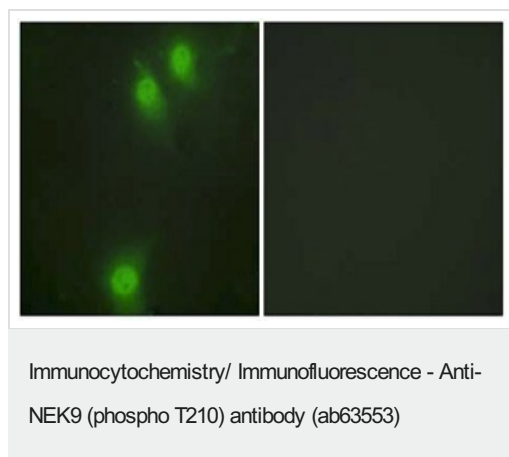
**All lanes :** Anti-NEK9 (phospho T210) antibody (ab63553) at 1/500 dilution

**Lane 1 :** extracts from HepG2 cells at 30 µg/ml

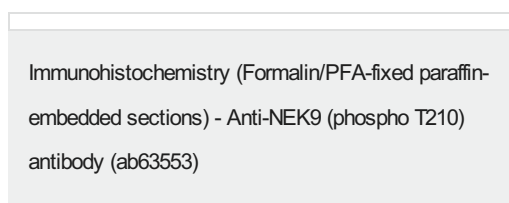
**Lane 2 :** extracts from HepG2 cells at 30 µg with immunizing peptide at 10 µg

**Predicted band size:** 107 kDa

**Observed band size:** 130 kDa



ab63553 at 1/500 dilution staining HeLa cells, without (left) and with (right) immunizing peptide.



Ab63553 staining Human colon. Staining is localised to the cytoplasm and nucleus.

Left panel: with primary antibody at 1 µg/ml. Right panel: isotype control.

Sections were stained using an automated system DAKO Autostainer Plus , at room temperature. Sections were rehydrated and antigen retrieved with the Dako 3-in-1 AR buffers EDTA pH 9.0 in a DAKO PT Link. Slides were peroxidase blocked in 3% H<sub>2</sub>O<sub>2</sub> in methanol for 10 minutes. They were then blocked with Dako Protein block for 10 minutes (containing casein 0.25% in PBS) then incubated with primary antibody for 20 minutes and detected with Dako Envision Flex amplification kit for 30 minutes. Colorimetric

detection was completed with diaminobenzidine for 5 minutes.  
Slides were counterstained with Haematoxylin and coverslipped under DePeX. Please note that for manual staining we recommend to optimize the primary antibody concentration and incubation time (overnight incubation), and amplification may be required.

**Please note:** All products are "FOR RESEARCH USE ONLY. NOT FOR USE IN DIAGNOSTIC PROCEDURES"

### **Our Abpromise to you: Quality guaranteed and expert technical support**

---

- Replacement or refund for products not performing as stated on the datasheet
- Valid for 12 months from date of delivery
- Response to your inquiry within 24 hours
- We provide support in Chinese, English, French, German, Japanese and Spanish
- Extensive multi-media technical resources to help you
- We investigate all quality concerns to ensure our products perform to the highest standards

If the product does not perform as described on this datasheet, we will offer a refund or replacement. For full details of the Abpromise, please visit <https://www.abcam.co.jp/abpromise> or contact our technical team.

### **Terms and conditions**

---

- Guarantee only valid for products bought direct from Abcam or one of our authorized distributors