


Anti-NEK7 antibody ab95873

1 References [画像数 3](#)

製品の概要

製品名	Anti-NEK7 antibody
製品の詳細	Rabbit polyclonal to NEK7
由来種	Rabbit
アプリケーション	適用あり: WB, IP, IHC-P
種交差性	交差種: Human 交差が予測される動物種: Rabbit, Horse, Cow, Dog, Pig, Chimpanzee, Orangutan 
免疫原	A region between residue 1 and 50 of human NEK7 (NP_598001.1)
ポジティブ・コントロール	HeLa and 293T cell lysates
特記事項	<p>The Life Science industry has been in the grips of a reproducibility crisis for a number of years. Abcam is leading the way in addressing this with our range of recombinant monoclonal antibodies and knockout edited cell lines for gold-standard validation. Please check that this product meets your needs before purchasing.</p> <p>If you have any questions, special requirements or concerns, please send us an inquiry and/or contact our Support team ahead of purchase. Recommended alternatives for this product can be found below, along with publications, customer reviews and Q&As</p>

製品の特性

製品の状態	Liquid
保存方法	Shipped at 4°C. Upon delivery aliquot and store at -20°C. Avoid freeze / thaw cycles.
バッファー	pH: 7 Preservative: 0.09% Sodium azide Constituent: Tris citrate/phosphate
精製度	Immunogen affinity purified
特記事項(精製)	ab95873 was affinity purified using an epitope specific to NEK7 immobilized on solid support.
ポリ/モノ	ポリクローナル
アイソタイプ	IgG

アプリケーション

The Abpromise guarantee

Abpromise保証は、次のテスト済みアプリケーションにおけるab95873の使用に適用されます

アプリケーションノートには、推奨の開始希釈率がありますが、適切な希釈率につきましてはご検討ください。

アプリケーション	Abreviews	特記事項
WB		1/2000 - 1/10000. Predicted molecular weight: 35 kDa.
IP		Use at 5-15 µg/mg of lysate.
IHC-P		1/500 - 1/2000. Perform heat mediated antigen retrieval with citrate buffer pH 6 before commencing with IHC staining protocol.

ターゲット情報

組織特異性

Highly expressed in lung, muscle, testis, brain, heart, liver, leukocyte and spleen. Lower expression in ovary, prostate and kidney. No expression seen in small intestine.

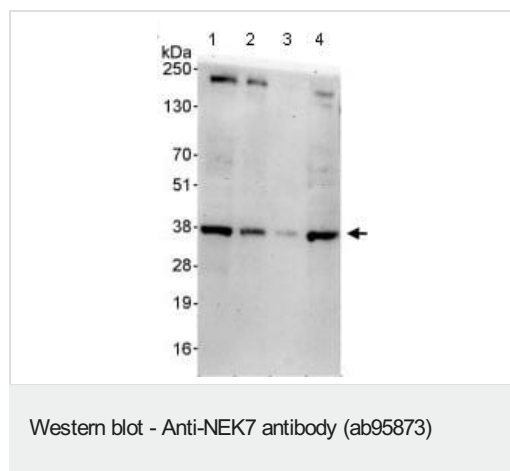
配列類似性

Belongs to the protein kinase superfamily. NEK Ser/Thr protein kinase family. NIMA subfamily. Contains 1 protein kinase domain.

細胞内局在

Cytoplasm.

画像



All lanes : Anti-NEK7 antibody (ab95873) at 0.4 µg/ml

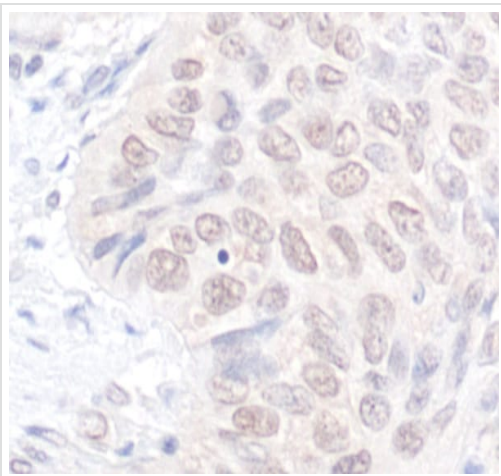
Lane 1 : HeLa cell lysate at 50 µg

Lane 2 : HeLa cell lysate at 15 µg

Lane 3 : HeLa cell lysate at 5 µg

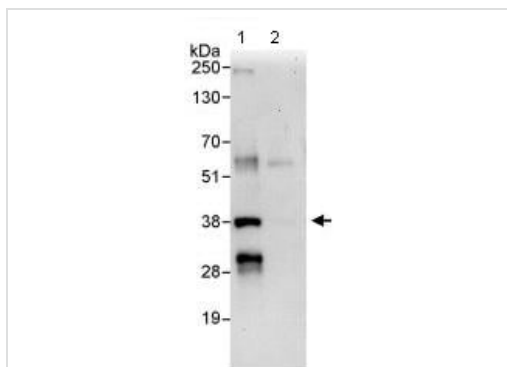
Lane 4 : 293T cell lysate at 50 µg

Predicted band size: 35 kDa



Immunohistochemistry (Formalin/PFA-fixed paraffin-embedded sections) - Anti-NEK7 antibody (ab95873)

Immunohistochemistry (Formalin/PFA-fixed paraffin-embedded sections) analysis of human lung carcinoma tissue labelling NEK7 with ab95873 at 1/1000 (1µg/ml). Detection: DAB.



Immunoprecipitation - Anti-NEK7 antibody (ab95873)

Detection of NEK7 by Western Blot of Immunoprecipitate. (1) ab95873 at 0.4µg/ml staining NEK7 which had been immunoprecipitated from HeLa whole cell lysate using ab95873 at 3µg/mg lysate (1 mg/IP; 20% of IP loaded/lane), (2) control IgG. Detection: Chemiluminescence with exposure time of 30 seconds.

All lanes : Anti-NEK7 antibody (ab95873) at 1 µg/ml

Lane 1 : IP: ab95873 at 10µg/mg lysate

Lane 2 : IP: Controle IgG at 10µg/mg lysate

Please note: All products are "FOR RESEARCH USE ONLY. NOT FOR USE IN DIAGNOSTIC PROCEDURES"

Our Abpromise to you: Quality guaranteed and expert technical support

- Replacement or refund for products not performing as stated on the datasheet
- Valid for 12 months from date of delivery
- Response to your inquiry within 24 hours
- We provide support in Chinese, English, French, German, Japanese and Spanish
- Extensive multi-media technical resources to help you
- We investigate all quality concerns to ensure our products perform to the highest standards

If the product does not perform as described on this datasheet, we will offer a refund or replacement. For full details of the Abpromise, please visit <https://www.abcam.co.jp/abpromise> or contact our technical team.

Terms and conditions

- Guarantee only valid for products bought direct from Abcam or one of our authorized distributors