

### Anti-NDUFB6 antibody [21C11BC11] ab110244

**35 References**   [画像数 2](#)

#### 製品の概要

製品名	Anti-NDUFB6 antibody [21C11BC11]
製品の詳細	Mouse monoclonal [21C11BC11] to NDUFB6
由来種	Mouse
アプリケーション	<b>適用あり:</b> Flow Cyt, WB
種交差性	<b>交差種:</b> Mouse, Rat, Cow, Human
免疫原	Full length protein. This information is considered to be commercially sensitive.
ポジティブ・コントロール	Isolated mitochondria from Human heart, bovine heart, rat heart and mouse heart.
特記事項	<p>This antibody clone is manufactured by Abcam. If you require a custom buffer formulation or conjugation for your experiments, please contact <a href="mailto:orders@abcam.com">orders@abcam.com</a>.</p> <p>The Life Science industry has been in the grips of a reproducibility crisis for a number of years. Abcam is leading the way in addressing this with our range of recombinant monoclonal antibodies and knockout edited cell lines for gold-standard validation. Please check that this product meets your needs before purchasing.</p> <p>If you have any questions, special requirements or concerns, please send us an inquiry and/or contact our Support team ahead of purchase. Recommended alternatives for this product can be found below, along with publications, customer reviews and Q&amp;As</p> <p>Product was previously marketed under the MitoSciences sub-brand.</p>

#### 製品の特性

製品の状態	Liquid
保存方法	Shipped at 4°C. Store at +4°C. Do Not Freeze.
バッファー	<p>pH: 7.5</p> <p>Preservative: 0.02% Sodium azide</p> <p>Constituent: HEPES buffered saline</p>
特記事項 (精製)	Near homogeneity as judged by SDS-PAGE. The antibody was produced in vitro using hybridomas grown in serum-free medium, and then purified by biochemical fractionation.
ポリ/モノ	モノクローナル
クローン名	21C11BC11

アイソタイプ IgG2b  
軽鎖の種類 kappa

## アプリケーション

**The Abpromise guarantee** Abpromise保証は、 次のテスト済みアプリケーションにおけるab110244の使用に適用されます  
アプリケーションノートには、推奨の開始希釈率がありますが、適切な希釈率につきましてはご確認ください。

アプリケーション	Abreviews	特記事項
Flow Cyt		Use 1 µg for 10 <sup>6</sup> cells. <b>ab170192</b> - Mouse monoclonal IgG2b, is suitable for use as an isotype control with this antibody.
WB		Use a concentration of 0.5 µg/ml. Predicted molecular weight: 15 kDa.

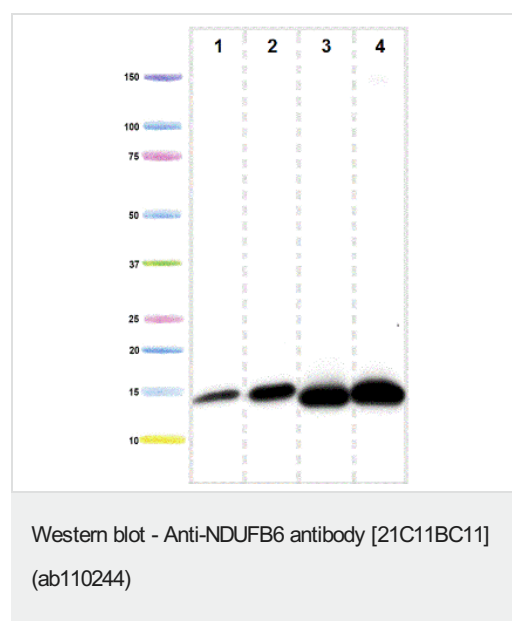
## ターゲット情報

**機能** Accessory subunit of the mitochondrial membrane respiratory chain NADH dehydrogenase (Complex I), that is believed not to be involved in catalysis. Complex I functions in the transfer of electrons from NADH to the respiratory chain. The immediate electron acceptor for the enzyme is believed to be ubiquinone.

**配列類似性** Belongs to the complex I NDUF6 subunit family.

**細胞内局在** Mitochondrion inner membrane.

## 画像



**All lanes :** Anti-NDUF6 antibody [21C11BC11] (ab110244) at 0.5 µg/ml

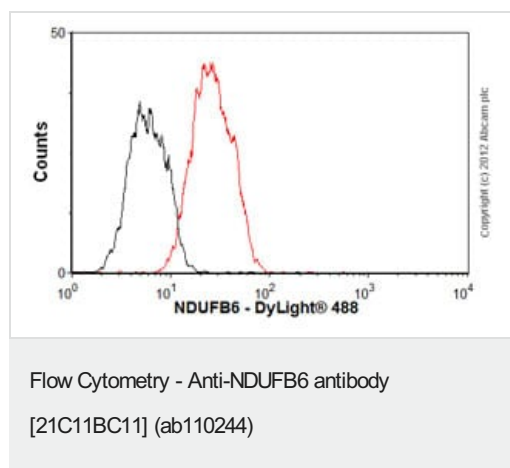
**Lane 1 :** isolated mitochondria from Human heart at 5 µg

**Lane 2 :** isolated mitochondria from cow heart at 1 µg

**Lane 3 :** isolated mitochondria from rat heart at 10 µg

**Lane 4 :** isolated mitochondria from mouse heart at 10 µg

**Predicted band size:** 15 kDa



Overlay histogram showing HepG2 cells stained with ab110244 (red line). The cells were fixed with 80% methanol (5 min) and then permeabilized with 0.1% PBS-Tween for 20 min. The cells were then incubated in 1x PBS / 10% normal goat serum / 0.3M glycine to block non-specific protein-protein interactions. The cells were then incubated with the antibody (ab110244, 1µg/1x10<sup>6</sup> cells) for 30 min at 22°C. The secondary antibody used was DyLight® 488 goat anti-mouse IgG (H+L) (**ab96879**) at 1/500 dilution for 30 min at 22°C. Isotype control antibody (black line) was mouse IgG2b [PLPV219] (**ab91366**, 2µg/1x10<sup>6</sup> cells) used under the same conditions. Acquisition of >5,000 events was performed.

**Please note:** All products are "FOR RESEARCH USE ONLY. NOT FOR USE IN DIAGNOSTIC PROCEDURES"

### Our Abpromise to you: Quality guaranteed and expert technical support

- Replacement or refund for products not performing as stated on the datasheet
- Valid for 12 months from date of delivery
- Response to your inquiry within 24 hours
- We provide support in Chinese, English, French, German, Japanese and Spanish
- Extensive multi-media technical resources to help you
- We investigate all quality concerns to ensure our products perform to the highest standards

If the product does not perform as described on this datasheet, we will offer a refund or replacement. For full details of the Abpromise, please visit <https://www.abcam.co.jp/abpromise> or contact our technical team.

### Terms and conditions

- Guarantee only valid for products bought direct from Abcam or one of our authorized distributors