


# Anti-NCAPG2 antibody ab70350

★★★★★ [1 Abreviews](#) [7 References](#) [画像数 2](#)

### 製品の概要

製品名	Anti-NCAPG2 antibody
製品の詳細	Rabbit polyclonal to NCAPG2
由来種	Rabbit
アプリケーション	<b>適用あり:</b> WB, IP
種交差性	<b>交差種:</b> Human <b>交差が予測される動物種:</b> Rhesus monkey, Gorilla, Orangutan 
免疫原	Synthetic peptide corresponding to a region between C terminal residues 1100 -1143 of human NCAPG2. (AAH43404.1)
ポジティブ・コントロール	WB: HeLa whole cell lysate ( <a href="#">ab150035</a> ) IP: HeLa whole cell extract
特記事項	<p>The Life Science industry has been in the grips of a reproducibility crisis for a number of years. Abcam is leading the way in addressing this with our range of recombinant monoclonal antibodies and knockout edited cell lines for gold-standard validation. Please check that this product meets your needs before purchasing.</p> <p>If you have any questions, special requirements or concerns, please send us an inquiry and/or contact our Support team ahead of purchase. Recommended alternatives for this product can be found below, along with publications, customer reviews and Q&amp;As</p>

### 製品の特性

製品の状態	Liquid
保存方法	Shipped at 4°C. Upon delivery aliquot and store at -20°C. Avoid freeze / thaw cycles.
バッファー	pH: 6.8 Preservative: 0.09% Sodium azide Constituents: 0.1% BSA, Tris buffered saline
精製度	Immunogen affinity purified
ポリ/モノ	ポリクローナル
アイソタイプ	IgG

### アプリケーション

## The Abpromise guarantee

**Abpromise保証は、次のテスト済みアプリケーションにおけるab70350の使用に適用されます**

アプリケーションノートには、推奨の開始希釈率がありますが、適切な希釈率につきましてはご検討ください。

アプリケーション	Abreviews	特記事項
WB	★★★★★ (1)	1/2000 - 1/10000. Detects a band of approximately 131 kDa (predicted molecular weight: 131 kDa).
IP		Use at an assay dependent concentration.

## ターゲット情報

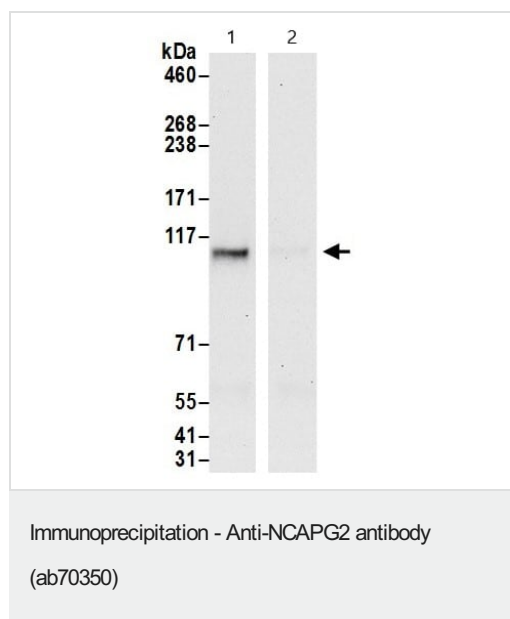
### 関連性

NCAPG2 is 1 of 3 non-SMC subunits that define condensin II. Condensin complexes I and II play essential roles in mitotic chromosome assembly and segregation. Both condensins contain 2 invariant structural maintenance of chromosome (SMC) subunits, SMC2 and SMC4, but they contain different sets of non-SMC subunits. NCAPG2 is 1 of 3 non-SMC subunits that defines condensin II.

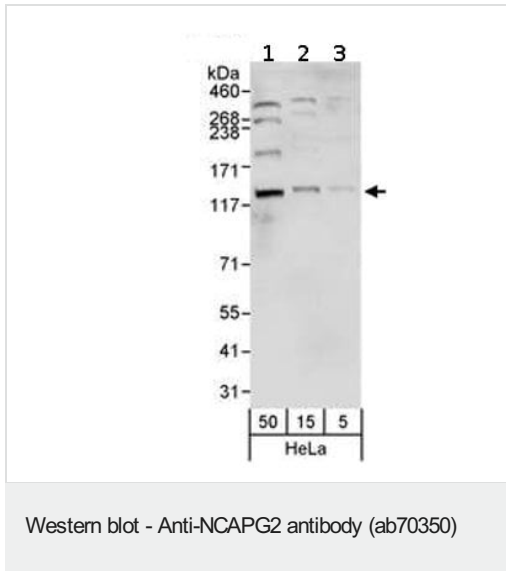
### 細胞内局在

nucleus

## 画像



ab70350 immunoprecipitating NCAPG2 at 6 µg per reaction. Lane 1: ab70350 in HeLa whole cell extract (0.5 or 1 mg per IP reaction; 20% of IP loaded). Lane 2: IgG control. For blotting immunoprecipitated NCAPG2, ab70350 was used at 1 µg/mL. Detection: Chemiluminescence with an exposure time of 30 seconds.



**All lanes :** Anti-NCAPG2 antibody (ab70350) at 0.04 µg/ml

**Lane 1 :** HeLa whole cell lysate at 50 µg

**Lane 2 :** HeLa whole cell lysate at 15 µg

**Lane 3 :** HeLa whole cell lysate at 5 µg

**Predicted band size:** 131 kDa

**Observed band size:** 131 kDa

**Please note:** All products are "FOR RESEARCH USE ONLY. NOT FOR USE IN DIAGNOSTIC PROCEDURES"

### Our Abpromise to you: Quality guaranteed and expert technical support

- Replacement or refund for products not performing as stated on the datasheet
- Valid for 12 months from date of delivery
- Response to your inquiry within 24 hours
- We provide support in Chinese, English, French, German, Japanese and Spanish
- Extensive multi-media technical resources to help you
- We investigate all quality concerns to ensure our products perform to the highest standards

If the product does not perform as described on this datasheet, we will offer a refund or replacement. For full details of the Abpromise, please visit <https://www.abcam.co.jp/abpromise> or contact our technical team.

### Terms and conditions

- Guarantee only valid for products bought direct from Abcam or one of our authorized distributors