

Anti-Nanos3 antibody ab70001

★★★★★ [4 Abreviews](#) [12 References](#) [画像数 3](#)

製品の概要

製品名	Anti-Nanos3 antibody
製品の詳細	Rabbit polyclonal to Nanos3
由来種	Rabbit
特異性	ab70001 does not cross-react with either Nanos1 or Nanos2.
アプリケーション	適用あり: WB, ICC/IF, IHC-P
種交差性	交差種: Mouse, Rat, Human
免疫原	Synthetic 16 amino acid peptide near the carboxy terminus of the human Nanos3 (GenBank accession no. P60323).
ポジティブ・コントロール	IHC-P: Human brain tissue. WB: Human brain tissue lysate. ICC/IF: Human brain cells.
特記事項	<p>The Life Science industry has been in the grips of a reproducibility crisis for a number of years. Abcam is leading the way in addressing this with our range of recombinant monoclonal antibodies and knockout edited cell lines for gold-standard validation. Please check that this product meets your needs before purchasing.</p> <p>If you have any questions, special requirements or concerns, please send us an inquiry and/or contact our Support team ahead of purchase. Recommended alternatives for this product can be found below, along with publications, customer reviews and Q&As</p>

製品の特性

製品の状態	Liquid
保存方法	Shipped at 4°C. Store at +4°C.
バッファー	pH: 7.2 Preservative: 0.02% Sodium azide Constituent: PBS
精製度	Immunogen affinity purified
ポリ/モノ	ポリクローナル
アイソタイプ	IgG

アプリケーション

The Abpromise guarantee

Abpromise保証は、次のテスト済みアプリケーションにおけるab70001の使用に適用されます

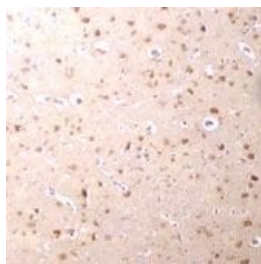
アプリケーションノートには、推奨の開始希釈率がありますが、適切な希釈率につきましてはご確認ください。

アプリケーション	Abreviews	特記事項
WB	★★★★★ (1)	Use a concentration of 1 - 2 µg/ml. Detects a band of approximately 19 kDa (predicted molecular weight: 19 kDa).
ICC/IF		Use at an assay dependent concentration.
IHC-P	★★★★★ (1)	Use a concentration of 2.5 µg/ml.

ターゲット情報

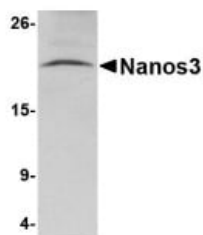
機能	Plays a role in the maintenance of the undifferentiated state of germ cells regulating the spermatogonia cell cycle and inducing a prolonged transit in G1 phase. Affects cell proliferation probably by repressing translation of specific mRNAs. Maintains the germ cell lineage by suppressing both Bax-dependent and -independent apoptotic pathways. Essential in the early stage embryo to protect the migrating primordial germ cells (PGCs) from apoptosis.
組織特異性	Ovary, testis and brain (at protein level). In the ovaries, expressed during multiple stages of oogenesis, including primordial, primary, secondary and antral follicles with the highest expression in the oocytes. In the testis, expressed in germ cells, type A spermatogonia (SA), primary spermatocytes (S1), round spermatids (S3) and elongated spermatids.
配列類似性	Belongs to the nanos family. Contains 1 nanos-type zinc finger.
発生段階	Fetal ovary and fetal testis (at protein level).
ドメイン	The Nanos-type zinc finger is composed of two C2HC motifs, each motif binding one molecule of zinc. It is essential for the translation repression activity of the protein.
細胞内局在	Nucleus. Cytoplasm. Cytoplasmic granule. Cytoplasm > P-body. The cytoplasmic granules are stress granules which are a dense aggregation in the cytosol composed of proteins and RNAs that appear when the cell is under stress. Co-localizes with PUM2, EIF2S1 and TIAL1 in the stress granules. Co-localizes with DCP1A in the P-body.

画像



ab70001 at 2.5µg/ml staining Nanos3 in human brain tissue section by Immunohistochemistry (Formalin/ PFA fixed paraffin embedded tissue sections).

Immunohistochemistry (Formalin/PFA-fixed paraffin-embedded sections) - Anti-Nanos3 antibody (ab70001)



Western blot - Anti-Nanos3 antibody (ab70001)

Anti-Nanos3 antibody (ab70001) at 2 µg/ml + Human brain tissue lysate at 15 µg

Predicted band size: 19 kDa

Observed band size: 19 kDa

Immunocytochemistry/ Immunofluorescence - Anti-Nanos3 antibody (ab70001)

Immunofluorescence of Nanos3 in Human Brain cells using ab70001 at 20 µg/ml.

Please note: All products are "FOR RESEARCH USE ONLY. NOT FOR USE IN DIAGNOSTIC PROCEDURES"

Our Abpromise to you: Quality guaranteed and expert technical support

- Replacement or refund for products not performing as stated on the datasheet
- Valid for 12 months from date of delivery
- Response to your inquiry within 24 hours
- We provide support in Chinese, English, French, German, Japanese and Spanish
- Extensive multi-media technical resources to help you
- We investigate all quality concerns to ensure our products perform to the highest standards

If the product does not perform as described on this datasheet, we will offer a refund or replacement. For full details of the Abpromise, please visit <https://www.abcam.co.jp/abpromise> or contact our technical team.

Terms and conditions

- Guarantee only valid for products bought direct from Abcam or one of our authorized distributors