

Anti-NANOGP8 antibody ab74096

1 References [画像数 1](#)

製品の概要

製品名	Anti-NANOGP8 antibody
製品の詳細	Rabbit polyclonal to NANOGP8
由来種	Rabbit
アプリケーション	適用あり: WB
種交差性	交差種: Human
免疫原	Synthesized peptide derived from an internal region of human NANOGP8.
ポジティブ・コントロール	Extracts from Jurkat, HUVEC, HT-29 and HepG2 cells.
特記事項	<p>The Life Science industry has been in the grips of a reproducibility crisis for a number of years. Abcam is leading the way in addressing this with our range of recombinant monoclonal antibodies and knockout edited cell lines for gold-standard validation. Please check that this product meets your needs before purchasing.</p> <p>If you have any questions, special requirements or concerns, please send us an inquiry and/or contact our Support team ahead of purchase. Recommended alternatives for this product can be found below, along with publications, customer reviews and Q&As</p>

製品の特性

製品の状態	Liquid
保存方法	Shipped at 4°C. Upon delivery aliquot and store at -20°C. Avoid freeze / thaw cycles.
バッファー	<p>pH: 7.40</p> <p>Preservative: 0.02% Sodium azide</p> <p>Constituents: 50% Glycerol, 0.87% Sodium chloride, PBS</p> <p>Without Mg2+ and Ca2+</p>
精製度	Immunogen affinity purified
特記事項 (精製)	The antibody was affinity purified from rabbit antiserum by affinity chromatography using epitope specific immunogen.
ポリ/モノ	ポリクローナル
アイソタイプ	IgG

アプリケーション

The Abpromise guarantee **Abpromise保証は、** 次のテスト済みアプリケーションにおけるab74096の使用に適用されます
アプリケーションノートには、推奨の開始希釈率がありますが、適切な希釈率につきましてはご検討ください。

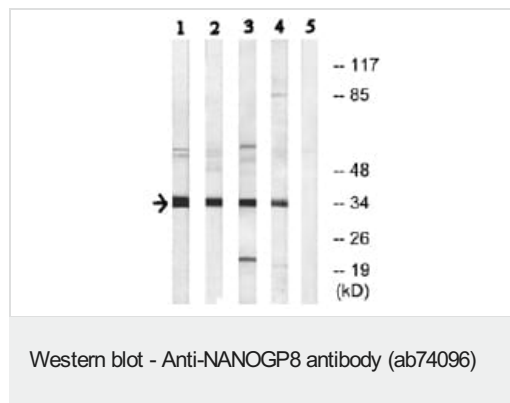
アプリケーション	Abreviews	特記事項
WB		1/500 - 1/1000. Predicted molecular weight: 35 kDa.

ターゲット情報

関連性 NANOGP8 may act as a transcription regulator. When overexpressed, promotes cells to enter into S phase and proliferation. Expressed in tumor uterine cervix, breast and urinary bladder tissues, and also osteosarcoma, hepatoma, and breast adenocarcinoma cancer cell lines.

細胞内局在 Nuclear

画像



All lanes : Anti-NANOGP8 antibody (ab74096) at 1/500 dilution

Lane 1 : Extracts from Jurkat cells with no peptide

Lane 2 : Extracts from HUVEC cells with no peptide

Lane 3 : Extracts from HT-29 cells with no peptide

Lane 4 : Extracts from HepG2 cells with no peptide

Lane 5 : Extracts from Jurkat cells with immunizing peptide at 10 µg

Lysates/proteins at 30 µg per lane.

Predicted band size: 35 kDa

Observed band size: 35 kDa

Additional bands at: 22 kDa. We are unsure as to the identity of these extra bands.

Please note: All products are "FOR RESEARCH USE ONLY. NOT FOR USE IN DIAGNOSTIC PROCEDURES"

Our Abpromise to you: Quality guaranteed and expert technical support

- Replacement or refund for products not performing as stated on the datasheet
- Valid for 12 months from date of delivery
- Response to your inquiry within 24 hours
- We provide support in Chinese, English, French, German, Japanese and Spanish

- Extensive multi-media technical resources to help you
- We investigate all quality concerns to ensure our products perform to the highest standards

If the product does not perform as described on this datasheet, we will offer a refund or replacement. For full details of the Abpromise, please visit <https://www.abcam.co.jp/abpromise> or contact our technical team.

Terms and conditions

- Guarantee only valid for products bought direct from Abcam or one of our authorized distributors