

Anti-NALP2 antibody ab36850

2 References [画像数 1](#)

製品の概要

製品名	Anti-NALP2 antibody
製品の詳細	Rabbit polyclonal to NALP2
由来種	Rabbit
アプリケーション	適用あり: WB
種交差性	交差種: Human
免疫原	Synthetic peptide corresponding to 12 amino acids near the carboxy-terminus of human NALP2.
ポジティブ・コントロール	PC-3 cell lysate.
特記事項	<p>The Life Science industry has been in the grips of a reproducibility crisis for a number of years. Abcam is leading the way in addressing this with our range of recombinant monoclonal antibodies and knockout edited cell lines for gold-standard validation. Please check that this product meets your needs before purchasing.</p> <p>If you have any questions, special requirements or concerns, please send us an inquiry and/or contact our Support team ahead of purchase. Recommended alternatives for this product can be found below, along with publications, customer reviews and Q&As</p>

製品の特性

製品の状態	Liquid
保存方法	Shipped at 4°C. Store at +4°C.
バッファー	pH: 7.2 Preservative: 0.02% Sodium azide Constituent: PBS
精製度	Immunogen affinity purified
ポリ/モノ	ポリクローナル
アイソタイプ	IgG

アプリケーション

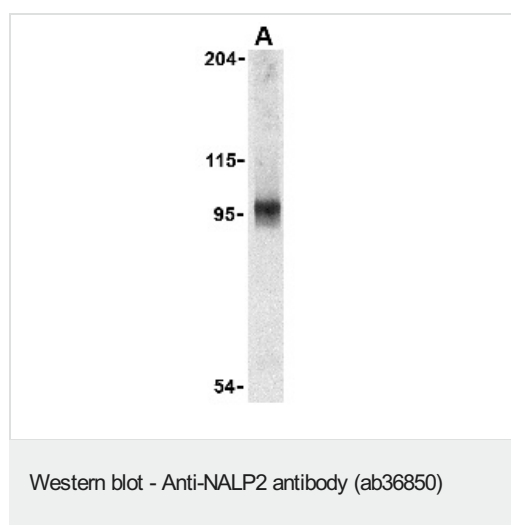
The Abpromise guarantee **Abpromise保証は、次のテスト済みアプリケーションにおけるab36850の使用に適用されます**
 アプリケーションノートには、推奨の開始希釈率がありますが、適切な希釈率につきましてはご検討ください。

アプリケーション	Abreviews	特記事項
WB		Use a concentration of 1 - 2 µg/ml. Detects a band of approximately 96 kDa (predicted molecular weight: 121 kDa).

ターゲット情報

機能	Suppresses TNF- and CD40-induced NFκB1 activity at the level of the IKK complex, by inhibiting NFκB1A degradation induced by TNF. When associated with PYCARD, activates CASP1, leading to the secretion of mature proinflammatory cytokine IL1B. May be a component of the inflammasome, a protein complex which also includes PYCARD, CARD8 and CASP1 and whose function would be the activation of proinflammatory caspases.
組織特異性	Expressed at high levels in lung, placenta and thymus and at lower levels in ovary, intestine and brain.
配列類似性	Belongs to the NLRP family. Contains 1 DAPIN domain. Contains 8 LRR (leucine-rich) repeats. Contains 1 NACHT domain.
ドメイン	The DAPIN domain is necessary and sufficient for suppression of NFκB1 activation induced by TNF and for inducing IL1B secretion in collaboration with caspase-1. It is involved in interaction with PYCARD. When isolated, the NACHT domain is involved in interaction with CARD8. This interaction is not detected for the full-length protein, maybe due to autoinhibition, this inhibition might be relieved by an inducible change in protein folding.
細胞内局在	Cytoplasm.

画像



Anti-NALP2 antibody (ab36850) at 1 µg/ml + PC-3 cell lysate

Predicted band size: 121 kDa

Observed band size: 96 kDa

Please note: All products are "FOR RESEARCH USE ONLY. NOT FOR USE IN DIAGNOSTIC PROCEDURES"

Our Abpromise to you: Quality guaranteed and expert technical support

- Replacement or refund for products not performing as stated on the datasheet
- Valid for 12 months from date of delivery
- Response to your inquiry within 24 hours

- We provide support in Chinese, English, French, German, Japanese and Spanish
- Extensive multi-media technical resources to help you
- We investigate all quality concerns to ensure our products perform to the highest standards

If the product does not perform as described on this datasheet, we will offer a refund or replacement. For full details of the Abpromise, please visit <https://www.abcam.co.jp/abpromise> or contact our technical team.

Terms and conditions

- Guarantee only valid for products bought direct from Abcam or one of our authorized distributors