


Anti-NAGK antibody ab95182

画像数 2

製品の概要

製品名	Anti-NAGK antibody
製品の詳細	Rabbit polyclonal to NAGK
由来種	Rabbit
アプリケーション	適用あり: WB, IP
種交差性	交差種: Human 交差が予測される動物種: Horse, Chimpanzee, Rhesus monkey, Gorilla, Orangutan 
免疫原	Other Immunogen Type corresponding to Human NAGK aa 50-100. Database link: NP_060037.2
ポジティブ・コントロール	Whole cell lysate from HeLa cells, 293T cell lysate
特記事項	<p>The Life Science industry has been in the grips of a reproducibility crisis for a number of years. Abcam is leading the way in addressing this with our range of recombinant monoclonal antibodies and knockout edited cell lines for gold-standard validation. Please check that this product meets your needs before purchasing.</p> <p>If you have any questions, special requirements or concerns, please send us an inquiry and/or contact our Support team ahead of purchase. Recommended alternatives for this product can be found below, along with publications, customer reviews and Q&As</p>

製品の特性

製品の状態	Liquid
保存方法	Shipped at 4°C. Upon delivery aliquot and store at -20°C. Avoid freeze / thaw cycles.
バッファー	pH: 7 Preservative: 0.09% Sodium azide Constituent: Tris citrate/phosphate
精製度	Immunogen affinity purified
特記事項(精製)	ab95182 was affinity purified using an epitope specific to NAGK immobilized on solid support.
ポリモノ	ポリクローナル
アイソタイプ	IgG

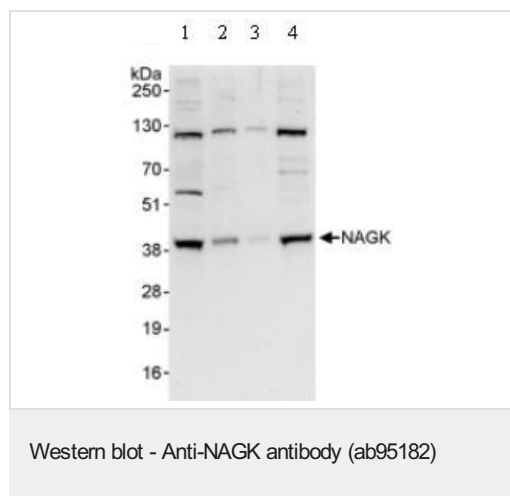
The Abpromise guarantee **Abpromise保証は、** 次のテスト済みアプリケーションにおけるab95182の使用に適用されます
アプリケーションノートには、推奨の開始希釈率がありますが、適切な希釈率につきましてはご検討ください。

アプリケーション	Abreviews	特記事項
WB		1/2000 - 1/10000. Predicted molecular weight: 37 kDa.
IP		Use at 2-5 µg/mg of lysate.

ターゲット情報

機能	Converts endogenous N-acetylglucosamine (GlcNAc), a major component of complex carbohydrates, from lysosomal degradation or nutritional sources into GlcNAc 6-phosphate. Also has ManNAc kinase activity.
組織特異性	Ubiquitous.
配列類似性	Belongs to the eukaryotic-type N-acetylglucosamine kinase family.

画像



All lanes : Anti-NAGK antibody (ab95182) at 0.4 µg/ml

Lane 1 : Whole cell lysate from HeLa at 50 µg

Lane 2 : Whole cell lysate from HeLa at 15 µg

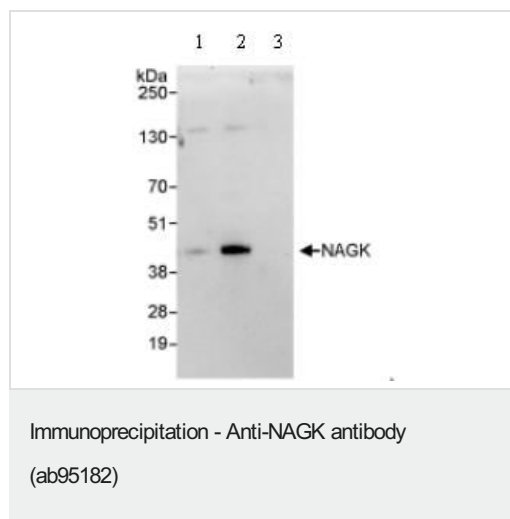
Lane 3 : Whole cell lysate from HeLa at 5 µg

Lane 4 : 293T cell lysate at 50 µg

Developed using the ECL technique.

Predicted band size: 37 kDa

Exposure time: 30 seconds



Detection of Human NAGK by Immunoprecipitation and Western Blot. Whole cell lysate from HeLa at 1 mg for IP, 20% of IP loaded. ab95182 was used for IP at 3 mcg/mg lysate and 1ug/ml for wb (lane 2) NAGK was also immunoprecipitated by another rabbit antibody (lane 1) and control IgG (lane 3). Detection: Chemiluminescence with exposure times of 30 seconds.

Please note: All products are "FOR RESEARCH USE ONLY. NOT FOR USE IN DIAGNOSTIC PROCEDURES"

Our Abpromise to you: Quality guaranteed and expert technical support

- Replacement or refund for products not performing as stated on the datasheet
- Valid for 12 months from date of delivery
- Response to your inquiry within 24 hours
- We provide support in Chinese, English, French, German, Japanese and Spanish
- Extensive multi-media technical resources to help you
- We investigate all quality concerns to ensure our products perform to the highest standards

If the product does not perform as described on this datasheet, we will offer a refund or replacement. For full details of the Abpromise, please visit <https://www.abcam.co.jp/abpromise> or contact our technical team.

Terms and conditions

- Guarantee only valid for products bought direct from Abcam or one of our authorized distributors