

Anti-NABC1 antibody ab106661

3 References **画像数 3**

製品の概要

製品名	Anti-NABC1 antibody
製品の詳細	Rabbit polyclonal to NABC1
由来種	Rabbit
アプリケーション	適用あり: IHC-P, ICC/IF, WB
種交差性	交差種: Human
免疫原	A 16 amino acid synthetic peptide near the C terminal of Human NABC1 (EAW75575).
ポジティブ・コントロール	Human lung tissue lysate; Human breast carcinoma tissue.
特記事項	<p>The Life Science industry has been in the grips of a reproducibility crisis for a number of years. Abcam is leading the way in addressing this with our range of recombinant monoclonal antibodies and knockout edited cell lines for gold-standard validation. Please check that this product meets your needs before purchasing.</p> <p>If you have any questions, special requirements or concerns, please send us an inquiry and/or contact our Support team ahead of purchase. Recommended alternatives for this product can be found below, along with publications, customer reviews and Q&As</p>

製品の特性

製品の状態	Liquid
保存方法	Shipped at 4°C. Store at 4°C (stable for up to 12 months).
バッファー	pH: 7.2 Preservative: 0.02% Sodium azide Constituent: PBS
精製度	Immunogen affinity purified
ポリ/モノ	ポリクローナル
アイソタイプ	IgG

アプリケーション

The Abpromise guarantee **Abpromise保証は、** 次のテスト済みアプリケーションにおけるab106661の使用に適用されます
アプリケーションノートには、推奨の開始希釈率がありますが、適切な希釈率につきましてはご検討ください。

アプリケーション	Abreviews	特記事項
IHC-P		Use a concentration of 5 µg/ml.
ICC/IF		Use a concentration of 20 µg/ml.
WB		Use a concentration of 1 - 2 µg/ml. Predicted molecular weight: 62 kDa.

ターゲット情報

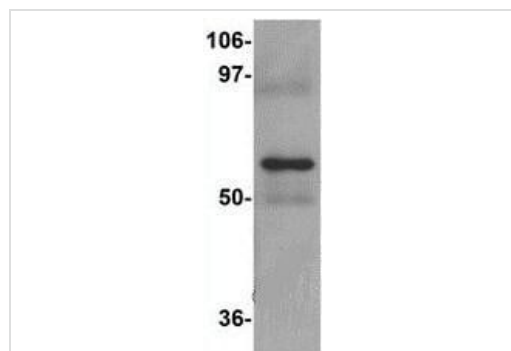
組織特異性

Expressed in brain and prostate, and at lower levels in testis, intestine and colon. Overexpressed in most breast cancer cell lines and down-regulated in some colorectal tumors.

細胞内局在

Cytoplasm.

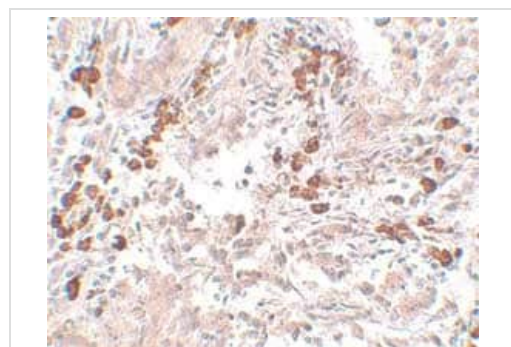
画像



Western blot - Anti-NABC1 antibody (ab106661)

Anti-NABC1 antibody (ab106661) at 1 µg/ml + Human lung tissue lysate at 15 µg

Predicted band size: 62 kDa



Immunohistochemistry (Formalin/PFA-fixed paraffin-embedded sections) - Anti-NABC1 antibody (ab106661)

ab106661, at 5µg/ml, staining NABC1 in Human breast carcinoma tissue by Immunohistochemistry.

Immunocytochemistry/ Immunofluorescence - Anti-NABC1 antibody (ab106661)

Immunofluorescence of BCAS1 in Human Breast Carcinoma cells using ab106661 at 20 ug/ml.

Please note: All products are "FOR RESEARCH USE ONLY. NOT FOR USE IN DIAGNOSTIC PROCEDURES"

Our Abpromise to you: Quality guaranteed and expert technical support

- Replacement or refund for products not performing as stated on the datasheet
- Valid for 12 months from date of delivery
- Response to your inquiry within 24 hours
- We provide support in Chinese, English, French, German, Japanese and Spanish
- Extensive multi-media technical resources to help you
- We investigate all quality concerns to ensure our products perform to the highest standards

If the product does not perform as described on this datasheet, we will offer a refund or replacement. For full details of the Abpromise, please visit <https://www.abcam.co.jp/abpromise> or contact our technical team.

Terms and conditions

- Guarantee only valid for products bought direct from Abcam or one of our authorized distributors