


### Anti-Nab2 antibody ab112056

画像数 2

#### 製品の概要

製品名	Anti-Nab2 antibody
製品の詳細	Rabbit polyclonal to Nab2
由来種	Rabbit
アプリケーション	<b>適用あり:</b> WB, IP
種交差性	<b>交差種:</b> Human <b>交差が予測される動物種:</b> Mouse, Rat, Rabbit, Horse, Guinea pig, Dog, Pig, Chimpanzee, Rhesus monkey, Gorilla, Orangutan 
免疫原	Synthetic peptide, corresponding to a region within amino acids 475-525 of Human Nab2 (NP_005958.1)
ポジティブ・コントロール	Whole cell lysate from 293T and Jurkat cells.
特記事項	<p>The Life Science industry has been in the grips of a reproducibility crisis for a number of years. Abcam is leading the way in addressing this with our range of recombinant monoclonal antibodies and knockout edited cell lines for gold-standard validation. Please check that this product meets your needs before purchasing.</p> <p>If you have any questions, special requirements or concerns, please send us an inquiry and/or contact our Support team ahead of purchase. Recommended alternatives for this product can be found below, along with publications, customer reviews and Q&amp;As</p>

#### 製品の特性

製品の状態	Liquid
保存方法	Shipped at 4°C. Upon delivery aliquot and store at -20°C. Avoid freeze / thaw cycles.
バッファー	pH: 7 Preservative: 0.09% Sodium azide Constituent: 99% Tris citrate/phosphate
精製度	pH 7 to 8. Immunogen affinity purified
ポリ/モノ	ポリクローナル
アイソタイプ	IgG

## アプリケーション

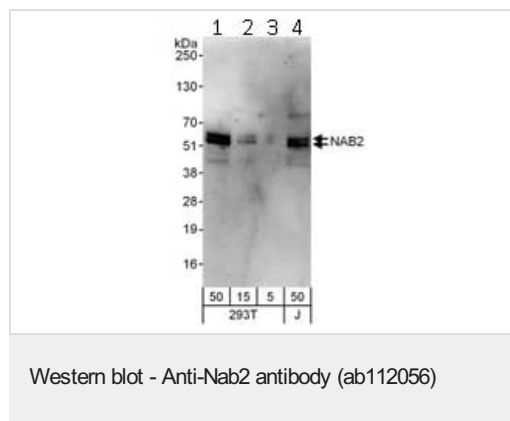
**The Abpromise guarantee**      Abpromise保証は、 次のテスト済みアプリケーションにおけるab112056の使用に適用されます  
アプリケーションノートには、推奨の開始希釈率がありますが、適切な希釈率につきましてはご検討ください。

アプリケーション	Abreviews	特記事項
WB		1/2000 - 1/10000. Predicted molecular weight: 57 kDa.
IP		Use at 2-10 µg/mg of lysate.

## ターゲット情報

機能	Acts as a transcriptional repressor for zinc finger transcription factors EGR1 and EGR2. Isoform 2 lacks repression ability.
組織特異性	Widely expressed at low levels. Highly expressed in melanoma cell lines.
配列類似性	Belongs to the NAB family.
ドメイン	The NAB conserved domain 1 (NCD1) interacts with EGR1 inhibitory domain and mediates multimerization. The NAB conserved domain 2 (NCD2) is necessary for transcriptional repression.
細胞内局在	Nucleus. Isoform 2 is not localized to the nucleus.

## 画像



**All lanes :** Anti-Nab2 antibody (ab112056) at 0.1 µg/ml

**Lane 1 :** HeLa whole cell lysate at 50 µg/ml

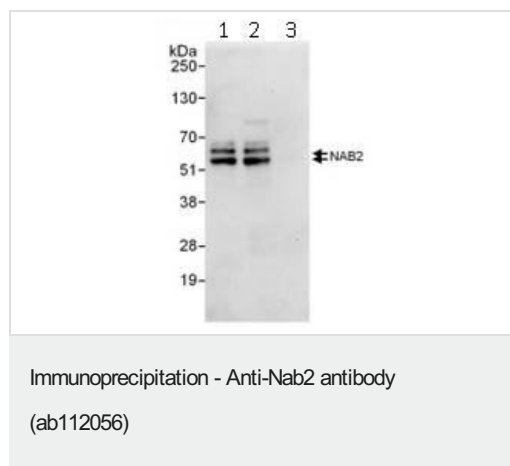
**Lane 2 :** HeLa whole cell lysate at 15 µg/ml

**Lane 3 :** HeLa whole cell lysate at 5 µg/ml

**Lane 4 :** Jurkat whole cell lysate at 50 µg/ml

**Predicted band size:** 57 kDa

**Exposure time:** 3 minutes



Immunoprecipitation of NAB2. Samples: 1 mg of whole cell lysate from 293T cells. NAB2 was detected with anti-NAB2 antibody NAB2 antibody (ab112056) at 1 µg/ml. Lane 1- NAB2 was also immunoprecipitated by rabbit anti-NAB2 antibody NAB2 antibody (ab112056) at 6 µg/mg lysate. Lane 2- NAB2 was immunoprecipitated by an rabbit anti-NAB2 antibody that recognizes an upstream epitope. Lane 3- Rabbit IgG control.

Detection: Chemiluminescence with exposure time of 10 seconds.

**Please note:** All products are "FOR RESEARCH USE ONLY. NOT FOR USE IN DIAGNOSTIC PROCEDURES"

### Our Abpromise to you: Quality guaranteed and expert technical support

- Replacement or refund for products not performing as stated on the datasheet
- Valid for 12 months from date of delivery
- Response to your inquiry within 24 hours
- We provide support in Chinese, English, French, German, Japanese and Spanish
- Extensive multi-media technical resources to help you
- We investigate all quality concerns to ensure our products perform to the highest standards

If the product does not perform as described on this datasheet, we will offer a refund or replacement. For full details of the Abpromise, please visit <https://www.abcam.co.jp/abpromise> or contact our technical team.

### Terms and conditions

- Guarantee only valid for products bought direct from Abcam or one of our authorized distributors