

Anti-N4BP1 antibody ab106649

画像数 3

製品の概要

製品名	Anti-N4BP1 antibody
製品の詳細	Rabbit polyclonal to N4BP1
由来種	Rabbit
特異性	At least three isoforms of N4BP1 are known to exist; ab106649 will only detect the longest isoform.
アプリケーション	適用あり: ICC, WB
種交差性	交差種: Human
免疫原	An 18 amino acid synthetic peptide near the N terminus of Human N4BP1 (NP_694574).
ポジティブ・コントロール	WB: Jurkat and K562 whole cell lysates; ICC: HeLa cells.
特記事項	<p>The Life Science industry has been in the grips of a reproducibility crisis for a number of years. Abcam is leading the way in addressing this with our range of recombinant monoclonal antibodies and knockout edited cell lines for gold-standard validation. Please check that this product meets your needs before purchasing.</p> <p>If you have any questions, special requirements or concerns, please send us an inquiry and/or contact our Support team ahead of purchase. Recommended alternatives for this product can be found below, along with publications, customer reviews and Q&As</p>

製品の特性

製品の状態	Liquid
保存方法	Shipped at 4°C. Store at 4°C (stable for up to 12 months).
バッファー	<p>pH: 7.2</p> <p>Preservative: 0.02% Sodium azide</p> <p>Constituent: PBS</p>
精製度	Immunogen affinity purified
ポリ/モノ	ポリクローナル
アイソタイプ	IgG

アプリケーション

The Abpromise guarantee

Abpromise保証は、次のテスト済みアプリケーションにおけるab106649の使用に適用されます

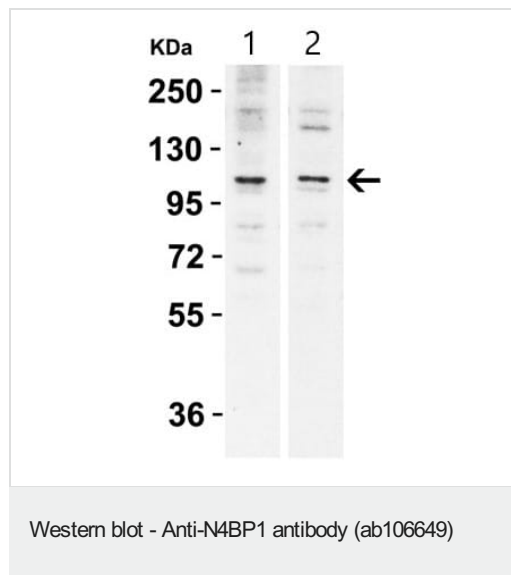
アプリケーションノートには、推奨の開始希釈率がありますが、適切な希釈率につきましてはご確認ください。

アプリケーション	Abreviews	特記事項
ICC		Use a concentration of 10 - 20 µg/ml.
WB		Use a concentration of 1 - 2 µg/ml. Predicted molecular weight: 100 kDa.

ターゲット情報

機能	Inhibitor of the E3 ubiquitin-protein ligase ITCH. Acts by interacting with the second WW domain of ITCH, leading to compete with ITCH's substrates and impairing ubiquitination of substrates.
組織特異性	Detected in heart, lung, brain, liver, skeletal muscle, pancreas, kidney, spleen, testis and ovary.
配列類似性	Belongs to the N4BP1 family.
翻訳後修飾	Monoubiquitinated by NEDD4. Polyubiquitinated, leading to its degradation by the proteasome. Sumoylated by SUMO1, abrogating polyubiquitination and subsequent degradation. Desumoylated by SENP1, leading to accumulation in PML nuclear bodies. Phosphorylated upon DNA damage, probably by ATM or ATR.
細胞内局在	Nucleus > nucleolus. Nucleus > PML body. Primarily localizes to the nucleolus. Also localizes to the PML nuclear bodies, when desumoylated.

画像



All lanes : Anti-N4BP1 antibody (ab106649) at 1 µg/ml

Lane 1 : Jurkat (human T cell leukemia cell line from peripheral blood) whole cell lysate

Lane 2 : K562 (human chronic myelogenous leukemia cell line from bone marrow) whole cell lysate

Lysates/proteins at 15 µg per lane.

Secondary

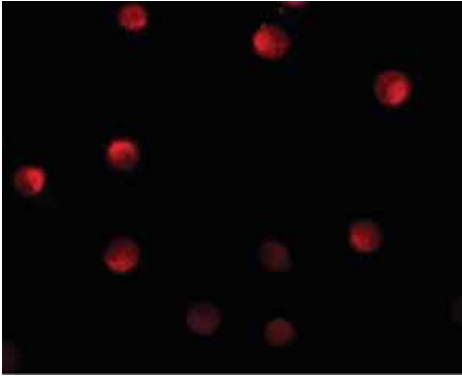
All lanes : Goat Anti-Rabbit IgG (HRP) at 1/10000 dilution

Predicted band size: 100 kDa

Exposure time: 30 seconds

Primary incubation for 1 hour at room temperature in 5%

NFDM/TBST.



Immunocytochemistry - Anti-N4BP1 antibody
(ab106649)

Immunofluorescence of N4BP1 in HeLa cells with ab106649 at 20 ug/mL.



Immunocytochemistry - Anti-N4BP1 antibody
(ab106649)

Immunocytochemistry of N4BP1 in HeLa cells with ab106649 at 10 ug/mL.

Please note: All products are "FOR RESEARCH USE ONLY. NOT FOR USE IN DIAGNOSTIC PROCEDURES"

Our Abpromise to you: Quality guaranteed and expert technical support

- Replacement or refund for products not performing as stated on the datasheet
- Valid for 12 months from date of delivery
- Response to your inquiry within 24 hours
- We provide support in Chinese, English, French, German, Japanese and Spanish
- Extensive multi-media technical resources to help you
- We investigate all quality concerns to ensure our products perform to the highest standards

If the product does not perform as described on this datasheet, we will offer a refund or replacement. For full details of the Abpromise, please visit <https://www.abcam.co.jp/abpromise> or contact our technical team.

Terms and conditions

- Guarantee only valid for products bought direct from Abcam or one of our authorized distributors