

Anti-MZF1 antibody ab64866

★★★★★ [5 Abreviews](#) [13 References](#) [画像数 3](#)

製品の概要

製品名	Anti-MZF1 antibody
製品の詳細	Rabbit polyclonal to MZF1
由来種	Rabbit
アプリケーション	適用あり: ICC/IF, WB, IHC-P
種交差性	交差種: Human
免疫原	Synthetic peptide corresponding to Human MZF1 (N terminal).
ポジティブ・コントロール	Extracts from 293 and K562 cells; human breast carcinoma tissue.
特記事項	<p>The Life Science industry has been in the grips of a reproducibility crisis for a number of years. Abcam is leading the way in addressing this with our range of recombinant monoclonal antibodies and knockout edited cell lines for gold-standard validation. Please check that this product meets your needs before purchasing.</p> <p>If you have any questions, special requirements or concerns, please send us an inquiry and/or contact our Support team ahead of purchase. Recommended alternatives for this product can be found below, along with publications, customer reviews and Q&As</p>

製品の特性

製品の状態	Liquid
保存方法	Shipped at 4°C. Store at -20°C. Stable for 12 months at -20°C.
バッファー	<p>pH: 7.40</p> <p>Preservative: 0.02% Sodium azide</p> <p>Constituents: PBS, 50% Glycerol (glycerin, glycerine), 0.87% Sodium chloride</p> <p>Without Mg2+ and Ca2+</p>
精製度	Immunogen affinity purified
ポリ/モノ	ポリクローナル
アイソタイプ	IgG

アプリケーション

The Abpromise guarantee

Abpromise保証は、次のテスト済みアプリケーションにおけるab64866の使用に適用されます

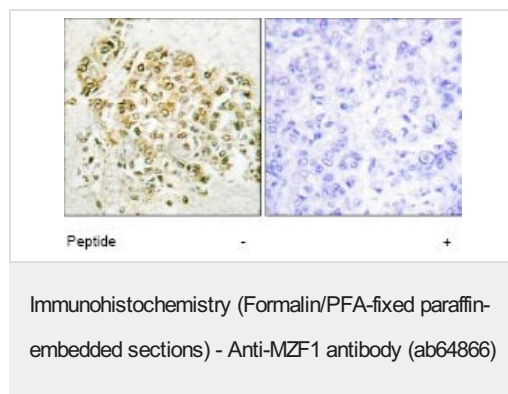
アプリケーションノートには、推奨の開始希釈率がありますが、適切な希釈率につきましてはご検討ください。

アプリケーション	Abreviews	特記事項
ICC/IF	★★★★☆ (1)	Use a concentration of 1 - 5 µg/ml.
WB	★★★★★ (3)	1/500 - 1/1000. Detects a band of approximately 82 kDa (predicted molecular weight: 82 kDa).
IHC-P		1/50 - 1/100.

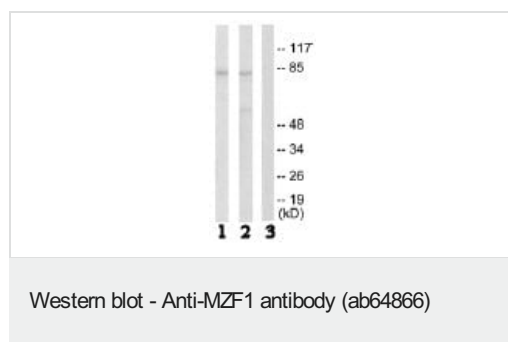
ターゲット情報

機能	Binds to target promoter DNA and functions as transcription regulator. Regulates transcription from the PADI1 and CDH2 promoter. May be one regulator of transcriptional events during hemopoietic development.
組織特異性	Preferentially expressed in differentiating myeloid cells. Detected in osteoblasts.
配列類似性	Belongs to the krueppel C2H2-type zinc-finger protein family. Contains 13 C2H2-type zinc fingers. Contains 1 SCAN box domain.
細胞内局在	Nucleus.

画像



Immunohistochemical analysis of paraffin-embedded human breast carcinoma tissue using ab64866 at a dilution of 1/50 - 1/100. Left hand panel - no immunising peptide; right hand panel - immunising peptide.



All lanes : Anti-MZF1 antibody (ab64866) at 1/500 dilution

Lane 1 : Extracts from 293 cells with no immunising peptide

Lane 2 : Extracts from K562 cells with no immunising peptide

Lane 3 : Extracts from K562 cells with immunising peptide at 5 µg

Lysates/proteins at 5 µg per lane.

Predicted band size: 82 kDa

Observed band size: 82 kDa

Immunocytochemistry/ Immunofluorescence - Anti-MZF1 antibody (ab64866)

ICC/IF image of ab64866 stained MCF7 cells. The cells were 4% PFA fixed (10 min) and then incubated in 1%BSA / 10% normal goat serum / 0.3M glycine in 0.1% PBS-Tween for 1h to permeabilise the cells and block non-specific protein-protein interactions. The cells were then incubated with the antibody (ab64866, 1µg/ml) overnight at +4°C. The secondary antibody (green) was Alexa Fluor® 488 goat anti-rabbit IgG (H+L) used at a 1/1000 dilution for 1h. Alexa Fluor® 594 WGA was used to label plasma membranes (red) at a 1/200 dilution for 1h. DAPI was used to stain the cell nuclei (blue) at a concentration of 1.43µM.

Please note: All products are "FOR RESEARCH USE ONLY. NOT FOR USE IN DIAGNOSTIC PROCEDURES"

Our Abpromise to you: Quality guaranteed and expert technical support

- Replacement or refund for products not performing as stated on the datasheet
- Valid for 12 months from date of delivery
- Response to your inquiry within 24 hours
- We provide support in Chinese, English, French, German, Japanese and Spanish
- Extensive multi-media technical resources to help you
- We investigate all quality concerns to ensure our products perform to the highest standards

If the product does not perform as described on this datasheet, we will offer a refund or replacement. For full details of the Abpromise, please visit <https://www.abcam.co.jp/abpromise> or contact our technical team.

Terms and conditions

- Guarantee only valid for products bought direct from Abcam or one of our authorized distributors