


Anti-Myosin light chain 3 antibody [EPR4160] ab108923

リコンビナント **RabMAb**

2 References 画像数 8

製品の概要

製品名	Anti-Myosin light chain 3 antibody [EPR4160]
製品の詳細	Rabbit monoclonal [EPR4160] to Myosin light chain 3
由来種	Rabbit
アプリケーション	適用あり: WB, IHC-P 適用なし: Flow Cyt, ICC/IF or IP
種交差性	交差種: Human 交差が予測される動物種: Mouse, Rat 
免疫原	Synthetic peptide. This information is proprietary to Abcam and/or its suppliers.
ポジティブ・コントロール	human heart muscle lysate, human skeletal muscle lysate; human cardiac muscle tissue, human skeletal muscle tissue
特記事項	This product is a recombinant monoclonal antibody, which offers several advantages including: <ul style="list-style-type: none"> - High batch-to-batch consistency and reproducibility - Improved sensitivity and specificity - Long-term security of supply - Animal-free production For more information see here . Our RabMAb [®] technology is a patented hybridoma-based technology for making rabbit monoclonal antibodies. For details on our patents, please refer to RabMAb[®] patents .

製品の特性

製品の状態	Liquid
保存方法	Shipped at 4°C. Store at -20°C.
バッファー	pH: 7.20 Preservative: 0.05% Sodium azide Constituents: 0.1% BSA, 40% Glycerol (glycerin, glycerine), 9.85% Tris glycine, 50% Tissue culture supernatant
精製度	Protein A purified
ポリ/モノ	モノクローナル

クローン名 EPR4160
アイソタイプ IgG

アプリケーション

The Abpromise guarantee **Abpromise保証は、**次のテスト済みアプリケーションにおけるab108923の使用に適用されます
アプリケーションノートには、推奨の開始希釈率がありますが、適切な希釈率につきましてはご検討ください。

アプリケーション	Abreviews	特記事項
WB		1/1000 - 1/10000. Predicted molecular weight: 22 kDa.
IHC-P		1/100 - 1/250. Perform heat mediated antigen retrieval with citrate buffer pH 6 before commencing with IHC staining protocol.

追加情報 Is unsuitable for Flow Cyt, ICC/IF or IP.

ターゲット情報

機能 Regulatory light chain of myosin. Does not bind calcium.

関連疾患 Defects in MYL3 are the cause of cardiomyopathy familial hypertrophic type 8 (CMH8) [MIM:608751]. Familial hypertrophic cardiomyopathy is a hereditary heart disorder characterized by ventricular hypertrophy, which is usually asymmetric and often involves the interventricular septum. The symptoms include dyspnea, syncope, collapse, palpitations, and chest pain. They can be readily provoked by exercise. The disorder has inter- and intrafamilial variability ranging from benign to malignant forms with high risk of cardiac failure and sudden cardiac death. CMH8 inheritance can be autosomal dominant or recessive.

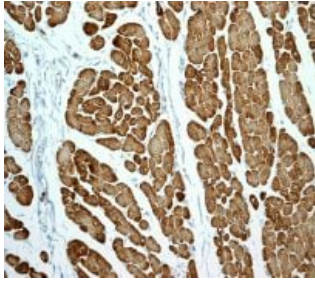
Defects in MYL3 are the cause of cardiomyopathy familial hypertrophic with mid-left ventricular chamber type 1 (MVC1) [MIM:608751]. MVC1 is a very rare variant of familial hypertrophic cardiomyopathy, characterized by mid-left ventricular chamber thickening.

配列類似性 Contains 3 EF-hand domains.

翻訳後修飾 The N-terminus is blocked.

N-terminus is methylated by METTL11A/NTM1.

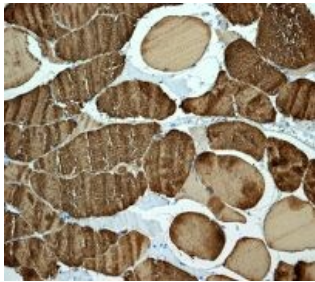
画像



Immunohistochemistry (Formalin/PFA-fixed paraffin-embedded sections) - Anti-Myosin light chain 3 antibody [EPR4160] (ab108923)

Immunohistochemical staining of paraffin-embedded human cardiac muscle using ab108923 at a dilution of 1/100.

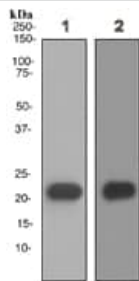
Perform heat mediated antigen retrieval with citrate buffer pH 6 before commencing with IHC staining protocol.



Immunohistochemistry (Formalin/PFA-fixed paraffin-embedded sections) - Anti-Myosin light chain 3 antibody [EPR4160] (ab108923)

Immunohistochemical staining of paraffin-embedded human skeletal muscle tissue using ab108923 at a dilution of 1/100.

Perform heat mediated antigen retrieval with citrate buffer pH 6 before commencing with IHC staining protocol.



Western blot - Anti-Myosin light chain 3 antibody [EPR4160] (ab108923)

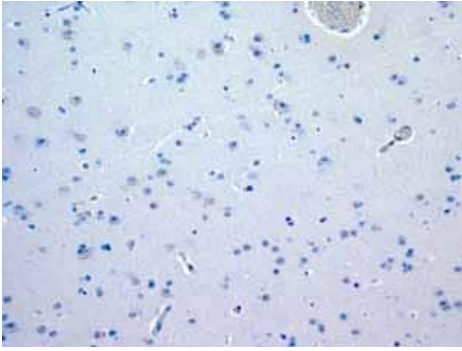
All lanes : Anti-Myosin light chain 3 antibody [EPR4160] (ab108923) at 1/1000 dilution

Lane 1 : human heart muscle tissue lysate

Lane 2 : human skeletal muscle tissue lysate

Lysates/proteins at 10 µg/ml per lane.

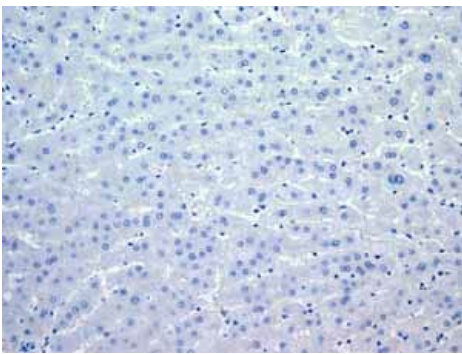
Predicted band size: 22 kDa



Immunohistochemistry (Formalin/PFA-fixed paraffin-embedded sections) - Anti-Myosin light chain 3 antibody [EPR4160] (ab108923)

ab108923 showing negative staining in Normal brain tissue.

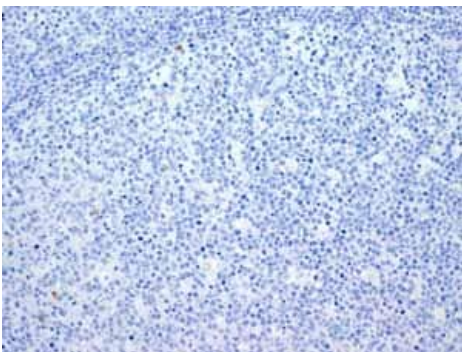
Perform heat mediated antigen retrieval with citrate buffer pH 6 before commencing with IHC staining protocol.



Immunohistochemistry (Formalin/PFA-fixed paraffin-embedded sections) - Anti-Myosin light chain 3 antibody [EPR4160] (ab108923)

ab108923 showing negative staining in Normal liver tissue.

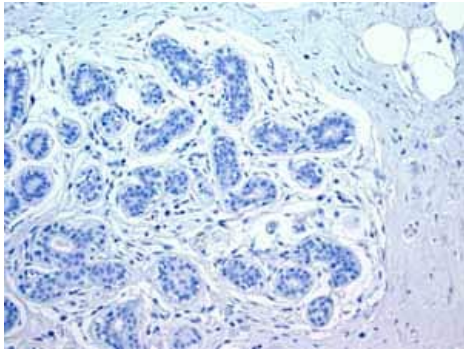
Perform heat mediated antigen retrieval with citrate buffer pH 6 before commencing with IHC staining protocol.



Immunohistochemistry (Formalin/PFA-fixed paraffin-embedded sections) - Anti-Myosin light chain 3 antibody [EPR4160] (ab108923)

ab108923 showing negative staining in Normal tonsil tissue.

Perform heat mediated antigen retrieval with citrate buffer pH 6 before commencing with IHC staining protocol.



ab108923 showing negative staining in Normal breast tissue.

Perform heat mediated antigen retrieval with citrate buffer pH 6 before commencing with IHC staining protocol.

Immunohistochemistry (Formalin/PFA-fixed paraffin-embedded sections) - Anti-Myosin light chain 3 antibody [EPR4160] (ab108923)

Why choose a recombinant antibody?



Research with confidence
Consistent and reproducible results



Long-term and scalable supply
Recombinant technology



Success from the first experiment
Confirmed specificity



Ethical standards compliant
Animal-free production

Anti-Myosin light chain 3 antibody [EPR4160] (ab108923)

Please note: All products are "FOR RESEARCH USE ONLY. NOT FOR USE IN DIAGNOSTIC PROCEDURES"

Our Abpromise to you: Quality guaranteed and expert technical support

- Replacement or refund for products not performing as stated on the datasheet
- Valid for 12 months from date of delivery
- Response to your inquiry within 24 hours
- We provide support in Chinese, English, French, German, Japanese and Spanish
- Extensive multi-media technical resources to help you
- We investigate all quality concerns to ensure our products perform to the highest standards

If the product does not perform as described on this datasheet, we will offer a refund or replacement. For full details of the Abpromise, please visit <https://www.abcam.co.jp/abpromise> or contact our technical team.

Terms and conditions

- Guarantee only valid for products bought direct from Abcam or one of our authorized distributors