

### Anti-Myosin Light Chain 2 antibody [AT3B2] ab89594

★★★★★ 3 Abreviews 6 References 画像数 3

医薬用外毒物

#### 製品の概要

|              |   |
|--------------|---|
| 製品名          | Anti-Myosin Light Chain 2 antibody [AT3B2]  |
| 製品の詳細        | Mouse monoclonal [AT3B2] to Myosin Light Chain 2  |
| 由来種          | Mouse   |
| アプリケーション     | <b>適用あり:</b> Flow Cyt (Intra), WB   |
| 種交差性         | <b>交差種:</b> Rat, Human  |
| 免疫原          | Recombinant full length protein corresponding to Human Myosin Light Chain 2 aa 1-166.<br>Database link: <a href="#">P10916</a>  |
| ポジティブ・コントロール | Rat heart extracts. Flow Cyt (Intra):A431 cells.  |
| 特記事項         | <p>This product was changed from ascites to tissue culture supernatant on 11<sup>th</sup> April 2019. Please note that the dilutions may need to be adjusted accordingly. If you have any questions, please do not hesitate to contact our scientific support team.</p> <p>The Life Science industry has been in the grips of a reproducibility crisis for a number of years. Abcam is leading the way in addressing this with our range of recombinant monoclonal antibodies and knockout edited cell lines for gold-standard validation. Please check that this product meets your needs before purchasing.</p> <p>If you have any questions, special requirements or concerns, please send us an inquiry and/or contact our Support team ahead of purchase. Recommended alternatives for this product can be found below, along with publications, customer reviews and Q&amp;As</p> |

#### 製品の特性

|       |   |
|-------|---|
| 製品の状態 | Liquid  |
| 保存方法  | Shipped at 4°C. Store at +4°C short term (1-2 weeks). Upon delivery aliquot. Store at -20°C. Avoid freeze / thaw cycle. |
| バッファー | pH: 7.40<br>Preservative: 0.2% Sodium azide<br>Constituents: PBS, 10% Glycerol  |
| 精製度   | Protein A purified  |
| ポリ/モノ | モノクローナル   |
| クローン名 | AT3B2   |

アイソタイプ IgG2b  
 軽鎖の種類 kappa

## アプリケーション

**The Abpromise guarantee** Abpromise保証は、次のテスト済みアプリケーションにおけるab89594の使用に適用されず  
 アプリケーションノートには、推奨の開始希釈率がありますが、適切な希釈率につきましてはご検討ください。

| アプリケーション         | Abreviews | 特記事項  |
|------------------|-----------|---|
| Flow Cyt (Intra) |           | Use at an assay dependent concentration.<br><b>ab170192</b> - Mouse monoclonal IgG2b, is suitable for use as an isotype control with this antibody. |
| WB               | ★★★★★ (1) | Use at an assay dependent concentration. Detects a band of approximately 19 kDa (predicted molecular weight: 19 kDa).                               |

## ターゲット情報

### 関連疾患

Defects in MYL2 are the cause of cardiomyopathy familial hypertrophic type 10 (CMH10) [MIM:608758]. Familial hypertrophic cardiomyopathy is a hereditary heart disorder characterized by ventricular hypertrophy, which is usually asymmetric and often involves the interventricular septum. The symptoms include dyspnea, syncope, collapse, palpitations, and chest pain. They can be readily provoked by exercise. The disorder has inter- and intrafamilial variability ranging from benign to malignant forms with high risk of cardiac failure and sudden cardiac death. Defects in MYL2 are the cause of cardiomyopathy familial hypertrophic with mid-left ventricular chamber type 2 (MVC2) [MIM:608758]. MVC2 is a very rare variant of familial hypertrophic cardiomyopathy, characterized by mid-left ventricular chamber thickening.

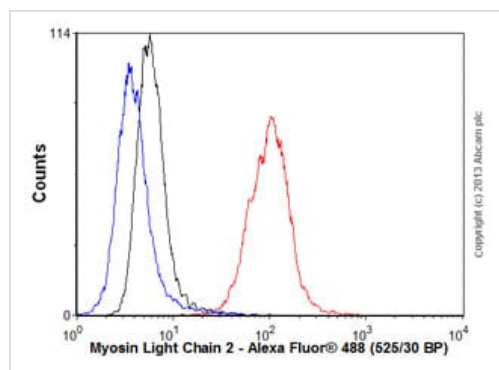
### 配列類似性

Contains 3 EF-hand domains.

### 翻訳後修飾

N-terminus is methylated by METTL11A/NTM1.

## 画像

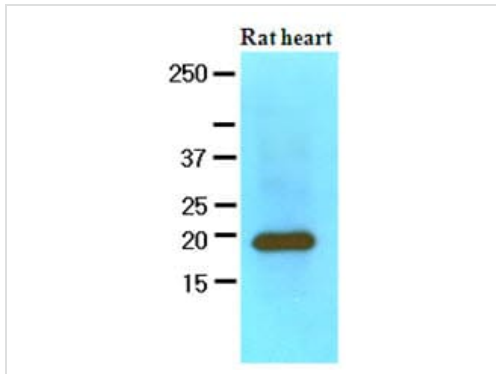


Flow Cytometry (Intracellular) - Anti-Myosin Light Chain 2 antibody [AT3B2] (ab89594)

Overlay histogram showing A431 cells stained with ab89594 (red line). The cells were fixed with 80% methanol (5 min) and then permeabilized with 0.1% PBS-Tween for 20 min. The cells were then incubated in 1x PBS / 10% normal goat serum / 0.3M glycine to block non-specific protein-protein interactions followed by the antibody (ab89594, 0.1µg/1x10<sup>6</sup> cells) for 30 min at 22°C. The secondary antibody used was Alexa Fluor® 488 goat anti-mouse IgG (H&L) (**ab150113**) at 1/2000 dilution for 30 min at 22°C. Isotype control antibody (black line) was mouse IgG2b [PLPV219] (**ab91366**, 1µg/1x10<sup>6</sup> cells) used under the same conditions. Unlabelled sample (blue line) was also used as a control. Acquisition of >5,000 events were collected using a 20mW Argon ion laser (488nm) and 525/30

bandpass filter.

This image was generated using the ascites version of the product.



Western blot - Anti-Myosin Light Chain 2 antibody [AT3B2] (ab89594)

Anti-Myosin Light Chain 2 antibody [AT3B2] (ab89594) at 1/1000 dilution + rat heart extracts at 60 µg

**Secondary**

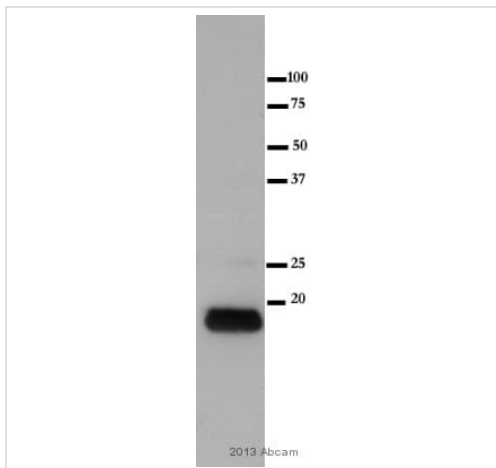
goat anti-mouse HRP

Developed using the ECL technique.

**Predicted band size:** 19 kDa

**Observed band size:** 19 kDa

This image was generated using the ascites version of the product.



Western blot - Anti-Myosin Light Chain 2 antibody [AT3B2] (ab89594)

This image is courtesy of an anonymous Abreview

Anti-Myosin Light Chain 2 antibody [AT3B2] (ab89594) at 1/2000 dilution + Rabbit heart tissue lysate at 10 µg

**Secondary**

HRP conjugated goat anti-mouse at 1/5000 dilution

Developed using the ECL technique.

Performed under reducing conditions.

**Predicted band size:** 19 kDa

**Exposure time:** 1 minute

This image was generated using the ascites version of the product.

**Please note:** All products are "FOR RESEARCH USE ONLY. NOT FOR USE IN DIAGNOSTIC PROCEDURES"

**Our Promise to you: Quality guaranteed and expert technical support**

- Replacement or refund for products not performing as stated on the datasheet
- Valid for 12 months from date of delivery
- Response to your inquiry within 24 hours

- We provide support in Chinese, English, French, German, Japanese and Spanish
- Extensive multi-media technical resources to help you
- We investigate all quality concerns to ensure our products perform to the highest standards

If the product does not perform as described on this datasheet, we will offer a refund or replacement. For full details of the Abpromise, please visit <https://www.abcam.co.jp/abpromise> or contact our technical team.

#### **Terms and conditions**

---

- Guarantee only valid for products bought direct from Abcam or one of our authorized distributors