




Anti-Myosin Light Chain 2 antibody ab48003

★★★★★ [1 Abreviews](#) [15 References](#) [画像数 2](#)

製品の概要

製品名	Anti-Myosin Light Chain 2 antibody
製品の詳細	Rabbit polyclonal to Myosin Light Chain 2
由来種	Rabbit
特異性	ab48003 is directed against the regulatory light chain of smooth and non muscle myosin. The antibody detects both unphosphorylated and monophosphorylated forms of the protein.
アプリケーション	適用あり: ICC/IF, WB, ELISA, IHC-P
種交差性	交差種: Mouse, Rat, Human 交差が予測される動物種: Chicken, Cow, Dog, Pig, Xenopus laevis, Zebrafish 
免疫原	Synthetic peptide: GANSNVFSMFEQTQIQ , corresponding to amino acids 12/27 of Human Myosin Light Chain 2  Run BLAST with  Run BLAST with
特記事項	<p>The Life Science industry has been in the grips of a reproducibility crisis for a number of years. Abcam is leading the way in addressing this with our range of recombinant monoclonal antibodies and knockout edited cell lines for gold-standard validation. Please check that this product meets your needs before purchasing.</p> <p>If you have any questions, special requirements or concerns, please send us an inquiry and/or contact our Support team ahead of purchase. Recommended alternatives for this product can be found below, along with publications, customer reviews and Q&As</p>

製品の特性

製品の状態	Liquid
保存方法	Shipped at 4°C. Upon delivery aliquot and store at -20°C or -80°C. Avoid repeated freeze / thaw cycles.
バッファー	Preservative: 0.01% Sodium azide Constituents: 0.42% Potassium phosphate, 0.87% Sodium chloride
精製度	Immunogen affinity purified
ポリ/モノ	ポリクローナル
アイソタイプ	IgG

アプリケーション

The Abpromise guarantee

Abpromise保証は、次のテスト済みアプリケーションにおけるab48003の使用に適用されます

アプリケーションノートには、推奨の開始希釈率がありますが、適切な希釈率につきましてはご確認ください。

アプリケーション	Abreviews	特記事項
ICC/IF	★★★★★ (1)	Use at an assay dependent concentration. PubMed: 23704920
WB		1/500 - 1/2000. Predicted molecular weight: 19 kDa.
ELISA		Use at an assay dependent concentration.
IHC-P		Use a concentration of 2 µg/ml. Perform heat mediated antigen retrieval before commencing with IHC staining protocol.

ターゲット情報

関連疾患

Defects in MYL2 are the cause of cardiomyopathy familial hypertrophic type 10 (CMH10) [MIM:608758]. Familial hypertrophic cardiomyopathy is a hereditary heart disorder characterized by ventricular hypertrophy, which is usually asymmetric and often involves the interventricular septum. The symptoms include dyspnea, syncope, collapse, palpitations, and chest pain. They can be readily provoked by exercise. The disorder has inter- and intrafamilial variability ranging from benign to malignant forms with high risk of cardiac failure and sudden cardiac death. Defects in MYL2 are the cause of cardiomyopathy familial hypertrophic with mid-left ventricular chamber type 2 (MVC2) [MIM:608758]. MVC2 is a very rare variant of familial hypertrophic cardiomyopathy, characterized by mid-left ventricular chamber thickening.

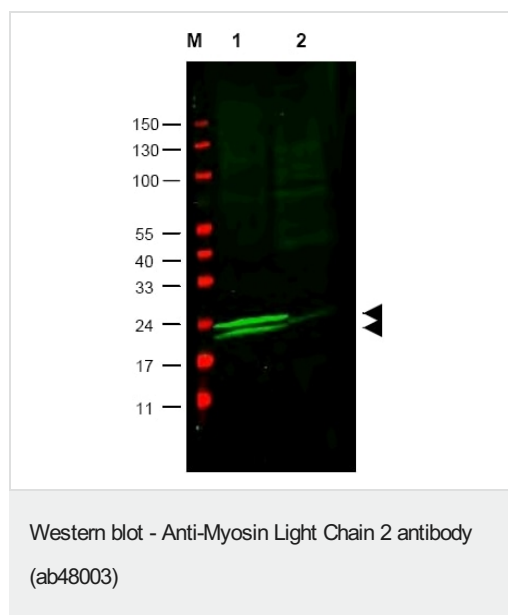
配列類似性

Contains 3 EF-hand domains.

翻訳後修飾

N-terminus is methylated by METTL11A/NTM1.

画像



All lanes : Anti-Myosin Light Chain 2 antibody (ab48003) at 1/600 dilution

Lane 1 : Vascular myosin (rat aorta), loaded with 35 µg of lysate

Lane 2 : Cardiac myosin (mouse heart, loaded with 35 µg of lysate

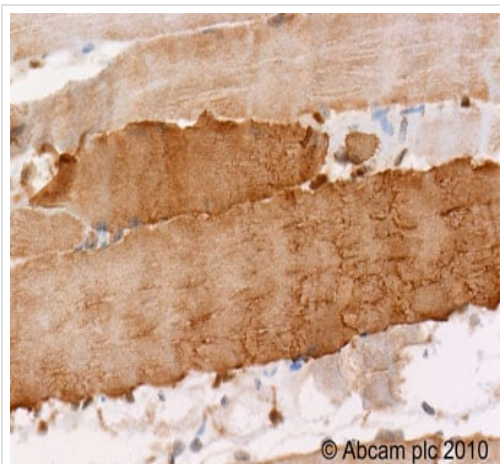
Secondary

All lanes : 1:10,000 dilution of IRDye800™ conjugated Gt-a-Rabbit IgG [H&L]

Predicted band size: 19 kDa

Observed band size: 19,24 kDa

Arrowheads indicate the detection of both monophosphorylated (upper) and unphosphorylated (lower) forms of the protein.



Immunohistochemistry (Formalin/PFA-fixed paraffin-embedded sections) - Anti-Myosin Light Chain 2 antibody (ab48003)

ab48003 (2µg/ml) staining Myosin Light Chain 2 in human skeletal muscle using an automated system (DAKO Autostainer Plus). Using this protocol there is strong staining of cell cytoplasm. Sections were rehydrated and antigen retrieved with the Dako 3 in 1 AR buffer EDTA pH 9.0 in a DAKO PT link. Slides were peroxidase blocked in 3% H₂O₂ in methanol for 10 mins. They were then blocked with Dako Protein block for 10 minutes (containing casein 0.25% in PBS) then incubated with primary antibody for 20 min and detected with Dako envision flex amplification kit for 30 minutes. Colorimetric detection was completed with Diaminobenzidine for 5 minutes. Slides were counterstained with Haematoxylin and coverslipped under DePeX. Please note that, for manual staining, optimization of primary antibody concentration and incubation time is recommended. Signal amplification may be required.

Please note: All products are "FOR RESEARCH USE ONLY. NOT FOR USE IN DIAGNOSTIC PROCEDURES"

Our Abpromise to you: Quality guaranteed and expert technical support

- Replacement or refund for products not performing as stated on the datasheet
- Valid for 12 months from date of delivery
- Response to your inquiry within 24 hours
- We provide support in Chinese, English, French, German, Japanese and Spanish
- Extensive multi-media technical resources to help you
- We investigate all quality concerns to ensure our products perform to the highest standards

If the product does not perform as described on this datasheet, we will offer a refund or replacement. For full details of the Abpromise, please visit <https://www.abcam.co.jp/abpromise> or contact our technical team.

Terms and conditions

- Guarantee only valid for products bought direct from Abcam or one of our authorized distributors