


Anti-Myoglobin antibody ab78441

画像数 3

製品の概要

製品名	Anti-Myoglobin antibody
製品の詳細	Rabbit polyclonal to Myoglobin
由来種	Rabbit
アプリケーション	適用あり: WB, Sandwich ELISA
種交差性	交差種: Human 交差が予測される動物種: Chimpanzee, Gorilla, Orangutan 
免疫原	Synthetic peptide corresponding to Human Myoglobin aa 100 to the C-terminus (C terminal) conjugated to keyhole limpet haemocyanin. (Peptide available as ab88944)
ポジティブ・コントロール	This antibody gave a positive signal in the following tissue lysates: Human Skeletal Muscle; Human Heart.
特記事項	<p>The Life Science industry has been in the grips of a reproducibility crisis for a number of years. Abcam is leading the way in addressing this with our range of recombinant monoclonal antibodies and knockout edited cell lines for gold-standard validation. Please check that this product meets your needs before purchasing.</p> <p>If you have any questions, special requirements or concerns, please send us an inquiry and/or contact our Support team ahead of purchase. Recommended alternatives for this product can be found below, along with publications, customer reviews and Q&As</p>

製品の特性

製品の状態	Liquid
保存方法	Shipped at 4°C. Store at +4°C short term (1-2 weeks). Upon delivery aliquot. Store at -20°C or -80°C. Avoid freeze / thaw cycle.
バッファー	pH: 7.40 Preservative: 0.02% Sodium azide Constituent: PBS
	Batches of this product that have a concentration < 1mg/ml may have BSA added as a stabilising agent. If you would like information about the formulation of a specific lot, please contact our scientific support team who will be happy to help.

精製度	Immunogen affinity purified
ポリ/モノ	ポリクローナル
アイソタイプ	IgG

アプリケーション

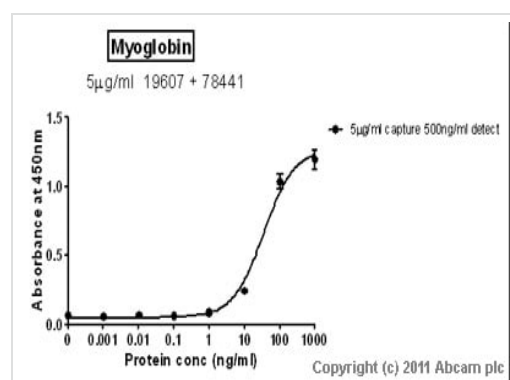
The Abpromise guarantee Abpromise保証は、次のテスト済みアプリケーションにおけるab78441の使用に適用されます
アプリケーションノートには、推奨の開始希釈率がありますが、適切な希釈率につきましてはご検討ください。

アプリケーション	Abreviews	特記事項
WB		Use a concentration of 0.5 µg/ml. Detects a band of approximately 17 kDa (predicted molecular weight: 17 kDa).
Sandwich ELISA		Use a concentration of 0.5 µg/ml. For sandwich ELISA, use this antibody as Detection at 0.5 µg/ml with Mouse monoclonal [BDI927] to Myoglobin (ab19607) as Capture.

ターゲット情報

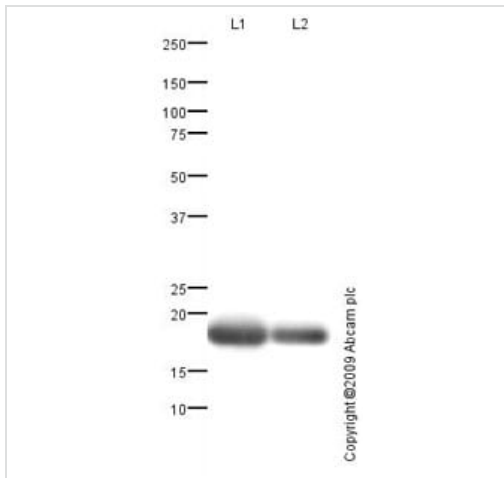
機能	Serves as a reserve supply of oxygen and facilitates the movement of oxygen within muscles.
配列類似性	Belongs to the globin family.

画像



Standard Curve for Myoglobin (Analyte: Myoglobin protein ([ab96036](#))); dilution range 1pg/ml to 1µg/ml using Capture Antibody Mouse monoclonal [BDI927] to Myoglobin ([ab19607](#)) at 5µg/ml and Detector Antibody Rabbit polyclonal to Myoglobin ([ab78441](#)) at 0.5µg/ml.

Sandwich ELISA - Anti-Myoglobin antibody
([ab78441](#))



Western blot - Anti-Myoglobin antibody (ab78441)

All lanes : Anti-Myoglobin antibody (ab78441) at 0.5 µg/ml

Lane 1 : Human skeletal muscle tissue lysate - total protein ([ab29330](#))

Lane 2 : Human heart tissue lysate - total protein ([ab29431](#))

Lysates/proteins at 5 µg per lane.

Secondary

All lanes : Goat polyclonal to Rabbit IgG - H&L - Pre-Adsorbed (HRP) at 1/3000 dilution

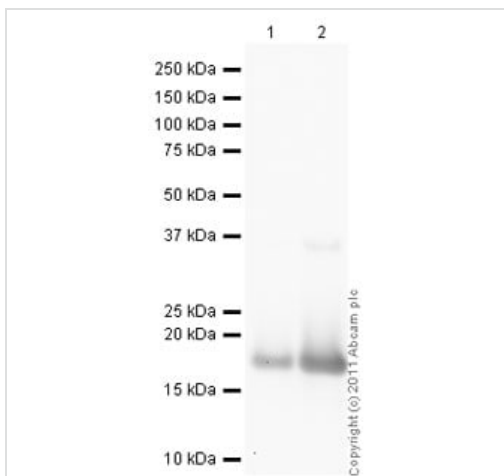
Developed using the ECL technique.

Performed under reducing conditions.

Predicted band size: 17 kDa

Observed band size: 17 kDa

Exposure time: 10 seconds



Western blot - Anti-Myoglobin antibody (ab78441)

All lanes : Anti-Myoglobin antibody (ab78441) at 0.5 µg/ml

Lane 1 : Native Human Myoglobin protein ([ab77876](#)) at 0.1 µg

Lane 2 : Native Human Myoglobin protein ([ab77876](#)) at 0.01 µg

Secondary

All lanes : Goat Anti-Rabbit IgG H&L (HRP) preadsorbed ([ab97080](#)) at 1/5000 dilution

Developed using the ECL technique.

Performed under reducing conditions.

Predicted band size: 17 kDa

Exposure time: 2 minutes

Please note: All products are "FOR RESEARCH USE ONLY. NOT FOR USE IN DIAGNOSTIC PROCEDURES"

Our Abpromise to you: Quality guaranteed and expert technical support

- Replacement or refund for products not performing as stated on the datasheet
- Valid for 12 months from date of delivery
- Response to your inquiry within 24 hours
- We provide support in Chinese, English, French, German, Japanese and Spanish
- Extensive multi-media technical resources to help you
- We investigate all quality concerns to ensure our products perform to the highest standards

If the product does not perform as described on this datasheet, we will offer a refund or replacement. For full details of the Abpromise, please visit <https://www.abcam.co.jp/abpromise> or contact our technical team.

Terms and conditions

- Guarantee only valid for products bought direct from Abcam or one of our authorized distributors