

# Anti-Myoglobin antibody ab74213

[1 References](#) [画像数 2](#)

### 製品の概要

---

製品名	Anti-Myoglobin antibody
製品の詳細	Rabbit polyclonal to Myoglobin
由来種	Rabbit
アプリケーション	<b>適用あり:</b> IHC-P, WB
種交差性	<b>交差種:</b> Human
免疫原	Full length native protein (purified) corresponding to Human Myoglobin.
ポジティブ・コントロール	Human skeletal muscle tissue.
特記事項	<p><b>This product is FOR RESEARCH USE ONLY. For commercial use, please contact <a href="mailto:partnerships@abcam.com">partnerships@abcam.com</a>.</b></p> <p>The Life Science industry has been in the grips of a reproducibility crisis for a number of years. Abcam is leading the way in addressing this with our range of recombinant monoclonal antibodies and knockout edited cell lines for gold-standard validation. Please check that this product meets your needs before purchasing.</p> <p>If you have any questions, special requirements or concerns, please send us an inquiry and/or contact our Support team ahead of purchase. Recommended alternatives for this product can be found below, along with publications, customer reviews and Q&amp;As</p>

### 製品の特性

---

製品の状態	Liquid
保存方法	Shipped at 4°C. Upon delivery aliquot and store at -20°C. Avoid freeze / thaw cycles.
バッファー	pH: 7.60 Preservative: 0.1% Sodium azide Constituents: PBS, 1% BSA
精製度	Immunogen affinity purified
特記事項(精製)	Purified.
ポリ/モノ	ポリクローナル
アイソタイプ	IgG

## アプリケーション

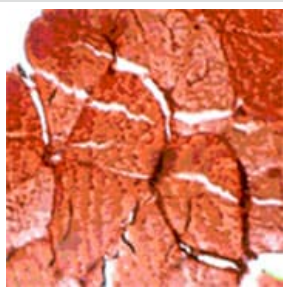
The Abpromise guarantee Abpromise保証は、次のテスト済みアプリケーションにおけるab74213の使用に適用されます  
アプリケーションノートには、推奨の開始希釈率がありますが、適切な希釈率につきましてはご確認ください。

アプリケーション	Abreviews	特記事項
IHC-P		1/200. 1/200 for 10 min at RT.
WB		Use at an assay dependent concentration. Predicted molecular weight: 17 kDa.

## ターゲット情報

**機能** Serves as a reserve supply of oxygen and facilitates the movement of oxygen within muscles.  
**配列類似性** Belongs to the globin family.

## 画像



ab74213 at 1/200 dilution staining Myoglobin in human skeletal muscle by Immunohistochemistry, Formalin-fixed, Paraffin-embedded tissue.

Immunohistochemistry (Formalin/PFA-fixed paraffin-embedded sections) - Anti-Myoglobin antibody (ab74213)

kD  
250  
150  
100  
75  
50  
37  
25  
20  
15  
10



Anti-Myoglobin antibody (ab74213) at 1/200 dilution + lysate prepared from skeletal muscle

**Predicted band size: 17 kDa**

Western blot - Anti-Myoglobin antibody (ab74213)

**Please note:** All products are "FOR RESEARCH USE ONLY. NOT FOR USE IN DIAGNOSTIC PROCEDURES"

### **Our Abpromise to you: Quality guaranteed and expert technical support**

---

- Replacement or refund for products not performing as stated on the datasheet
- Valid for 12 months from date of delivery
- Response to your inquiry within 24 hours
  
- We provide support in Chinese, English, French, German, Japanese and Spanish
- Extensive multi-media technical resources to help you
- We investigate all quality concerns to ensure our products perform to the highest standards

If the product does not perform as described on this datasheet, we will offer a refund or replacement. For full details of the Abpromise, please visit <https://www.abcam.co.jp/abpromise> or contact our technical team.

### **Terms and conditions**

---

- Guarantee only valid for products bought direct from Abcam or one of our authorized distributors