


### Anti-Myoferlin antibody [7D2] ab76746

★★★★☆ [1 Abreviews](#) [8 References](#) [画像数 2](#)

#### 製品の概要

製品名	Anti-Myoferlin antibody [7D2]
製品の詳細	Mouse monoclonal [7D2] to Myoferlin
由来種	Mouse
アプリケーション	<b>適用あり:</b> ICC/IF, Flow Cyt
種交差性	<b>交差種:</b> Human <b>交差が予測される動物種:</b> Mouse 
免疫原	Synthetic peptide corresponding to Human Myoferlin (N terminal). Database link: <a href="#">Q9NZM1</a>
特記事項	<p>The Life Science industry has been in the grips of a reproducibility crisis for a number of years. Abcam is leading the way in addressing this with our range of recombinant monoclonal antibodies and knockout edited cell lines for gold-standard validation. Please check that this product meets your needs before purchasing.</p> <p>If you have any questions, special requirements or concerns, please send us an inquiry and/or contact our Support team ahead of purchase. Recommended alternatives for this product can be found below, along with publications, customer reviews and Q&amp;As</p>

#### 製品の特性

製品の状態	Liquid
保存方法	Shipped at 4°C. Upon delivery aliquot and store at -20°C. Avoid repeated freeze / thaw cycles.
バッファー	Constituents: 1.21% Tris, 0.75% Glycine, 2% Sucrose
精製度	Protein A purified
ポリ/モノ	モノクローナル
クローン名	7D2
アイソタイプ	IgG2a
軽鎖の種類	kappa

#### アプリケーション

## The Abpromise guarantee

**Abpromise保証は、次のテスト済みアプリケーションにおけるab76746の使用に適用されます**

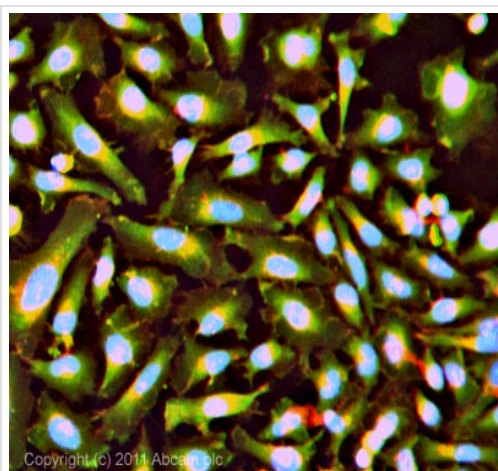
アプリケーションノートには、推奨の開始希釈率がありますが、適切な希釈率につきましてはご検討ください。

アプリケーション	Abreviews	特記事項
ICC/IF		Use a concentration of 5 µg/ml.
Flow Cyt	★★★★★ (1)	1/100. <b>ab170191</b> - Mouse monoclonal IgG2a, is suitable for use as an isotype control with this antibody.

## ターゲット情報

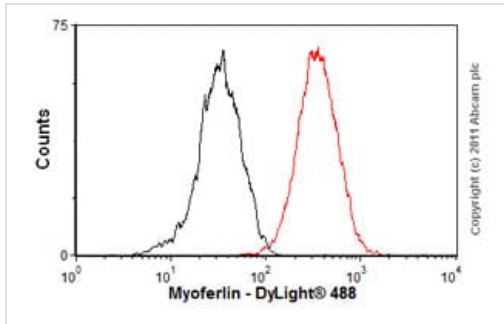
機能	Calcium/phospholipid-binding protein that plays a role in the plasmalemma repair mechanism of endothelial cells that permits rapid resealing of membranes disrupted by mechanical stress. Involved in endocytic recycling. Implicated in VEGF signal transduction by regulating the levels of the receptor KDR.
組織特異性	Expressed in myoblast and endothelial cells (at protein level). Highly expressed in cardiac and skeletal muscles. Also present in lung, and at very low levels in kidney, placenta and brain.
配列類似性	Belongs to the ferlin family. Contains 5 C2 domains.
ドメイン	The C2 domain 1 associates with lipid membranes in a calcium-dependent manner.
細胞内局在	Cell membrane. Nucleus membrane. Cytoplasmic vesicle membrane. Concentrated at the membrane sites of both myoblast-myoblast and myoblast-myotube fusions. Detected at the plasmalemma in endothelial cells lining intact blood vessels (By similarity). Found at nuclear and plasma membranes. Enriched in undifferentiated myoblasts near the plasma membrane in punctate structures.

## 画像



ICC/IF image of ab76746 stained HeLa cells. The cells were 100% methanol fixed (5 min) and then incubated in 1%BSA / 10% normal goat serum / 0.3M glycine in 0.1% PBS-Tween for 1h to permeabilise the cells and block non-specific protein-protein interactions. The cells were then incubated with the antibody (ab76746, 5µg/ml) overnight at +4°C. The secondary antibody (green) was **ab96879**, DyLight® 488 goat anti-mouse IgG (H+L) used at a 1/250 dilution for 1h. Alexa Fluor® 594 WGA was used to label plasma membranes (red) at a 1/200 dilution for 1h. DAPI was used to stain the cell nuclei (blue) at a concentration of 1.43µM.

Immunocytochemistry/ Immunofluorescence - Anti-Myoferlin antibody [7D2] (ab76746)



Flow Cytometry - Anti-Myoferlin antibody [7D2]  
(ab76746)

Overlay histogram showing HeLa cells stained with ab76746 (red line). The cells were fixed with 80% methanol (5 min) and then permeabilized with 0.1% PBS-Tween for 20 min. The cells were then incubated in 1x PBS / 10% normal goat serum / 0.3M glycine to block non-specific protein-protein interactions followed by the antibody (ab76746, 1/100 dilution) for 30 min at 22°C. The secondary antibody used was DyLight® 488 goat anti-mouse IgG (H+L) ([ab96879](#)) at 1/500 dilution for 30 min at 22°C. Isotype control antibody (black line) was mouse IgG2a [ICIGG2A] ([ab91361](#), 2µg/1x10<sup>6</sup> cells) used under the same conditions. Acquisition of >5,000 events was performed.

**Please note:** All products are "FOR RESEARCH USE ONLY. NOT FOR USE IN DIAGNOSTIC PROCEDURES"

### Our Abpromise to you: Quality guaranteed and expert technical support

- Replacement or refund for products not performing as stated on the datasheet
- Valid for 12 months from date of delivery
- Response to your inquiry within 24 hours
- We provide support in Chinese, English, French, German, Japanese and Spanish
- Extensive multi-media technical resources to help you
- We investigate all quality concerns to ensure our products perform to the highest standards

If the product does not perform as described on this datasheet, we will offer a refund or replacement. For full details of the Abpromise, please visit <https://www.abcam.co.jp/abpromise> or contact our technical team.

### Terms and conditions

- Guarantee only valid for products bought direct from Abcam or one of our authorized distributors