


Anti-MyoD1 antibody ab64159

★★★★★ **3 Abreviews** **27 References** 画像数 **2**

製品の概要

製品名	Anti-MyoD1 antibody
製品の詳細	Rabbit polyclonal to MyoD1
由来種	Rabbit
アプリケーション	適用あり: Sandwich ELISA, WB
種交差性	交差種: Mouse, Human 交差が予測される動物種: Cow, Pig, Rhesus monkey 
免疫原	Synthetic peptide conjugated to KLH derived from within residues 300 to the C-terminus of Human MyoD1. Immunogen の所有権に関して (Peptide available as ab66473 .)
特記事項	<p>The Life Science industry has been in the grips of a reproducibility crisis for a number of years. Abcam is leading the way in addressing this with our range of recombinant monoclonal antibodies and knockout edited cell lines for gold-standard validation. Please check that this product meets your needs before purchasing.</p> <p>If you have any questions, special requirements or concerns, please send us an inquiry and/or contact our Support team ahead of purchase. Recommended alternatives for this product can be found below, along with publications, customer reviews and Q&As</p>

製品の特性

製品の状態	Liquid
保存方法	Shipped at 4°C. Store at +4°C short term (1-2 weeks). Upon delivery aliquot. Store at -20°C or -80°C. Avoid freeze / thaw cycle.
バッファー	<p>pH: 7.40</p> <p>Preservative: 0.02% Sodium azide</p> <p>Constituent: PBS</p> <p>Batches of this product that have a concentration < 1mg/ml may have BSA added as a stabilising agent. If you would like information about the formulation of a specific lot, please contact our scientific support team who will be happy to help.</p>
精製度	Immunogen affinity purified
ポリ/モノ	ポリクローナル
アイソタイプ	IgG

アプリケーション

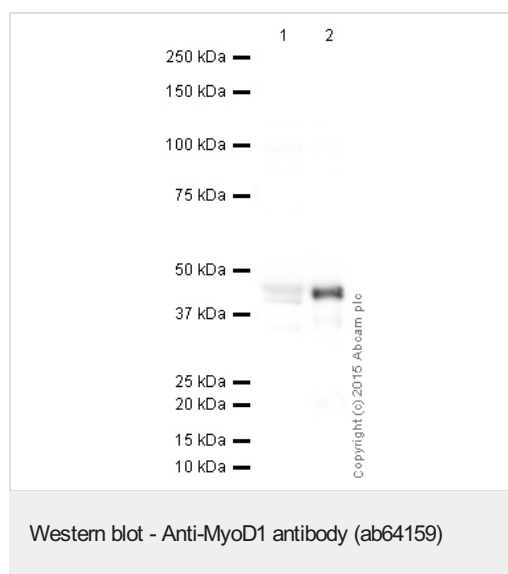
The Abpromise guarantee Abpromise保証は、次のテスト済みアプリケーションにおけるab64159の使用に適用されます
アプリケーションノートには、推奨の開始希釈率がありますが、適切な希釈率につきましてはご確認ください。

アプリケーション	Abreviews	特記事項
Sandwich ELISA		Use a concentration of 0.1 µg/ml. Can be paired for Sandwich ELISA with Mouse monoclonal [5.2F] to MyoD1 (ab16148) . For sandwich ELISA, use this antibody as Detection at 0.5 µg/ml with Mouse monoclonal [5.2F] to MyoD1 (ab16148) as Capture.
WB	★★★★★ (1)	Use a concentration of 1 µg/ml. Detects a band of approximately 45 kDa (predicted molecular weight: 34 kDa).

ターゲット情報

機能	Involved in muscle differentiation (myogenic factor). Induces fibroblasts to differentiate into myoblasts. Activates muscle-specific promoters. Interacts with and is inhibited by the twist protein. This interaction probably involves the basic domains of both proteins.
配列類似性	Contains 1 basic helix-loop-helix (bHLH) domain.
翻訳後修飾	Acetylated by a complex containing EP300 and PCAF. The acetylation is essential to activate target genes. Conversely, its deacetylation by SIRT1 inhibits its function. Ubiquitinated on the N-terminus; which is required for proteasomal degradation.
細胞内局在	Nucleus.

画像



All lanes : Anti-MyoD1 antibody (ab64159) at 1 µg/ml

Lane 1 : Skeletal Muscle (Mouse) Tissue Lysate at 20 µg

Lane 2 : Rh30 Whole Cell Lysate at 5 µg

Secondary

All lanes : Goat polyclonal to Rabbit IgG - H&L - Pre-Adsorbed (HRP) at 1/50000 dilution

Developed using the ECL technique.

Performed under reducing conditions.

Predicted band size: 34 kDa

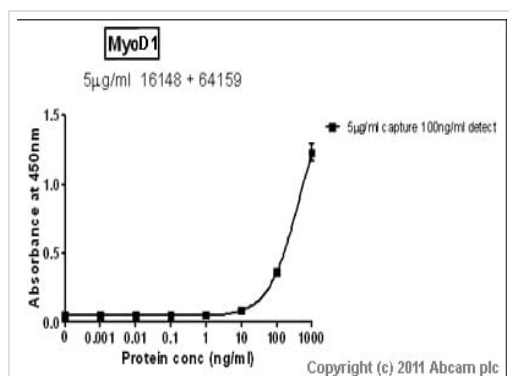
Observed band size: 45 kDa

Additional bands at: 47 kDa (possible post-translational modification)

Exposure time: 1 minute

This blot was produced using a 4-12% Bis-tris gel under the MOPS buffer system. The gel was run at 200V for 50 minutes before being transferred onto a Nitrocellulose membrane at 30V for 70 minutes. The membrane was then blocked for an hour using 2% Bovine Serum Albumin before being incubated with ab64159 overnight at 4°C. Antibody binding was detected using an anti-rabbit antibody conjugated to HRP, and visualised using ECL development solution **ab133406**.

ab64159 detects a band at 45 kDa, while this differs to its predicted molecular weight of 34kDa, the banding pattern observed is consistent with what has been described in the literature PMID:19352326.



Sandwich ELISA - Anti-MyoD1 antibody (ab64159)

Standard Curve for Myo-D; dilution range 1 pg/ml to 1 ug/ml using Capture Antibody **Mouse monoclonal [5.2F] to MyoD1 (ab16148)** at 5ug/ml and Detector Antibody **Rabbit polyclonal to MyoD1 (ab64159)** at 0.1ug/ml.

Please note: All products are "FOR RESEARCH USE ONLY. NOT FOR USE IN DIAGNOSTIC PROCEDURES"

Our Abpromise to you: Quality guaranteed and expert technical support

- Replacement or refund for products not performing as stated on the datasheet
- Valid for 12 months from date of delivery
- Response to your inquiry within 24 hours
- We provide support in Chinese, English, French, German, Japanese and Spanish
- Extensive multi-media technical resources to help you
- We investigate all quality concerns to ensure our products perform to the highest standards

If the product does not perform as described on this datasheet, we will offer a refund or replacement. For full details of the Abpromise,

please visit <https://www.abcam.co.jp/abpromise> or contact our technical team.

Terms and conditions

- Guarantee only valid for products bought direct from Abcam or one of our authorized distributors