

Anti-Myocilin antibody ab41552

11 References [画像数 1](#)

製品の概要

製品名	Anti-Myocilin antibody
製品の詳細	Rabbit polyclonal to Myocilin
由来種	Rabbit
特異性	The antibody does not cross react with any other protein in RPE cells.
アプリケーション	適用あり: IHC-P, WB, IP
種交差性	交差種: Mouse, Rat, Human, Monkey
免疫原	Synthetic peptide: CLVWDVGARTAQLRKANDQSGR conjugated to KLH, corresponding to N terminal amino acids 25/46 of Myocilin Run BLAST with Run BLAST with
特記事項	<p>The Life Science industry has been in the grips of a reproducibility crisis for a number of years. Abcam is leading the way in addressing this with our range of recombinant monoclonal antibodies and knockout edited cell lines for gold-standard validation. Please check that this product meets your needs before purchasing.</p> <p>If you have any questions, special requirements or concerns, please send us an inquiry and/or contact our Support team ahead of purchase. Recommended alternatives for this product can be found below, along with publications, customer reviews and Q&As</p>

製品の特性

製品の状態	Liquid
保存方法	Shipped at 4°C. Store at +4°C short term (1-2 weeks). Upon delivery aliquot. Store at -20°C or -80°C. Avoid freeze / thaw cycle.
精製度	Protein A purified
ポリモノ	ポリクローナル
アイソタイプ	IgG

アプリケーション

The Abpromise guarantee

Abpromise保証は、 次のテスト済みアプリケーションにおけるab41552の使用に適用されます

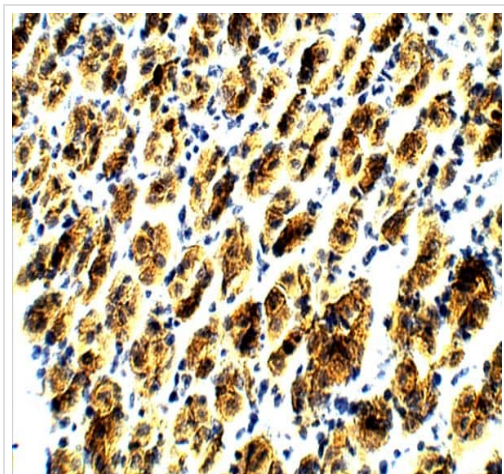
アプリケーションノートには、推奨の開始希釈率がありますが、適切な希釈率につきましてはご確認ください。

アプリケーション	Abreviews	特記事項
IHC-P		1/200.
WB		Use at an assay dependent concentration.
IP		Use at an assay dependent concentration.

ターゲット情報

機能	May participate in the obstruction of fluid outflow in the trabecular meshwork.
組織特異性	Expressed in large amounts in various types of muscle, ciliary body, papillary sphincter, skeletal muscle, heart and other tissues. Expressed predominantly in the retina. In normal eyes, found in the inner uveal meshwork region and the anterior portion of the meshwork. In contrast, in many glaucomatous eyes, it is found in more regions of the meshwork and appeared more intensively than in normal eyes, regardless of the type or clinical severity of glaucoma.
関連疾患	Defects in MYOC are the cause of primary open angle glaucoma type 1A (GLC1A) [MIM:137750]. Primary open angle glaucoma (POAG) is characterized by a specific pattern of optic nerve and visual field defects. The angle of the anterior chamber of the eye is open, and usually the intraocular pressure is increased. The disease is asymptomatic until the late stages, by which time significant and irreversible optic nerve damage has already taken place. Defects in MYOC may also contribute to primary congenital glaucoma type 3A (GLC3A) [MIM:231300]. Defects in MYOC may contribute to this phenotype via digenic inheritance. GLC3A is an autosomal recessive form of primary congenital glaucoma (PCG). PCG is characterized by marked increase of intraocular pressure at birth or early childhood, large ocular globes (buphthalmos) and corneal edema. It results from developmental defects of the trabecular meshwork and anterior chamber angle of the eye that prevent adequate drainage of aqueous humor.
配列類似性	Contains 1 olfactomedin-like domain.
翻訳後修飾	Different isoforms may arise by post-translational modifications. Glycosylated. Palmitoylated.
細胞内局在	Rough endoplasmic reticulum. Secreted. Cell projection > cilium. Located preferentially in the ciliary rootlet and basal body of the connecting cilium of photoreceptor cells, and in the rough endoplasmic reticulum. Also secreted.

画像



Immunohistochemistry (Formalin/PFA-fixed paraffin-embedded sections) analysis of mouse stomach tissue labelling Myocilin with ab41552 at a dilution of 1/50. Counterstained with hematoxylin (blue). 40X magnification.

Immunohistochemistry (Formalin/PFA-fixed paraffin-embedded sections) - Anti-Myocilin antibody (ab41552)

Please note: All products are "FOR RESEARCH USE ONLY. NOT FOR USE IN DIAGNOSTIC PROCEDURES"

Our Abpromise to you: Quality guaranteed and expert technical support

- Replacement or refund for products not performing as stated on the datasheet
- Valid for 12 months from date of delivery
- Response to your inquiry within 24 hours
- We provide support in Chinese, English, French, German, Japanese and Spanish
- Extensive multi-media technical resources to help you
- We investigate all quality concerns to ensure our products perform to the highest standards

If the product does not perform as described on this datasheet, we will offer a refund or replacement. For full details of the Abpromise, please visit <https://www.abcam.co.jp/abpromise> or contact our technical team.

Terms and conditions

- Guarantee only valid for products bought direct from Abcam or one of our authorized distributors