

# Anti-Myelin Protein Zero antibody ab39375

★★★★★ [2 Abreviews](#) [14 References](#) [画像数 2](#)

### 製品の概要

製品名	Anti-Myelin Protein Zero antibody
製品の詳細	Chicken polyclonal to Myelin Protein Zero
由来種	Chicken
アプリケーション	<b>適用あり:</b> IHC-Fr, WB
種交差性	<b>交差種:</b> Mouse, Human
免疫原	Synthetic peptide; sequence common to mouse and human Myelin Protein Zero.
特記事項	<p>The Life Science industry has been in the grips of a reproducibility crisis for a number of years. Abcam is leading the way in addressing this with our range of recombinant monoclonal antibodies and knockout edited cell lines for gold-standard validation. Please check that this product meets your needs before purchasing.</p> <p>If you have any questions, special requirements or concerns, please send us an inquiry and/or contact our Support team ahead of purchase. Recommended alternatives for this product can be found below, along with publications, customer reviews and Q&amp;As</p>

### 製品の特性

製品の状態	Liquid
保存方法	Shipped at 4°C. Store at +4°C short term (1-2 weeks). Store at -20°C or -80°C. Avoid freeze / thaw cycle.
バッファー	Preservative: 0.02% Sodium azide Constituent: PBS
特記事項 (精製)	IgY fractions were then affinity-purified using a peptide column.
ポリ/モノ	ポリクローナル
アイソタイプ	IgY

### アプリケーション

**The Abpromise guarantee**      **Abpromise保証は、次のテスト済みアプリケーションにおけるab39375の使用に適用されます**  
 アプリケーションノートには、推奨の開始希釈率がありますが、適切な希釈率につきましてはご検討ください。

アプリケーション	Abreviews	特記事項
IHC-Fr		1/100 - 1/200.
WB		1/250 - 1/500. Predicted molecular weight: 28 kDa.

## ターゲット情報

機能	Creation of an extracellular membrane face which guides the wrapping process and ultimately compacts adjacent lamellae.
組織特異性	Found only in peripheral nervous system Schwann cells.
関連疾患	<p>Defects in MPZ are the cause of Charcot-Marie-Tooth disease type 1B (CMT1B) [MIM:118200]. CMT1B is a form of Charcot-Marie-Tooth disease, the most common inherited disorder of the peripheral nervous system. Charcot-Marie-Tooth disease is classified in two main groups on the basis of electrophysiologic properties and histopathology: primary peripheral demyelinating neuropathy or CMT1, and primary peripheral axonal neuropathy or CMT2. Neuropathies of the CMT1 group are characterized by severely reduced nerve conduction velocities (less than 38 m/sec), segmental demyelination and remyelination with onion bulb formations on nerve biopsy, slowly progressive distal muscle atrophy and weakness, absent deep tendon reflexes, and hollow feet.</p> <p>Defects in MPZ are the cause of Charcot-Marie-Tooth disease type 2I (CMT2I) [MIM:607677]. CMT2I is a form of Charcot-Marie-Tooth disease, the most common inherited disorder of the peripheral nervous system. Charcot-Marie-Tooth disease is classified in two main groups on the basis of electrophysiologic properties and histopathology: primary peripheral demyelinating neuropathy or CMT1, and primary peripheral axonal neuropathy or CMT2. Neuropathies of the CMT2 group are characterized by signs of axonal regeneration in the absence of obvious myelin alterations, normal or slightly reduced nerve conduction velocities, and progressive distal muscle weakness and atrophy. CMT2I is characterized by late onset (range 47 to 60 years).</p> <p>Defects in MPZ are the cause of Charcot-Marie-Tooth disease type 2J (CMT2J) [MIM:607736]. CMT2J is a form of Charcot-Marie-Tooth disease characterized by the association of axonal peripheral neuropathy with hearing loss and pupillary abnormalities such as Adie pupil. Inheritance is autosomal dominant.</p> <p>Defects in MPZ are the cause of Adie pupil (ADIEP) [MIM:103100]. A stationary, benign disorder characterized by tonic, sluggishly reacting pupil and hypoactive or absent tendon reflexes. Adie pupil is a characteristic of Charcot-Marie-Tooth disease type 2J.</p> <p>Defects in MPZ may be the cause of Charcot-Marie-Tooth disease dominant intermediate type D (CMTDID) [MIM:607791]. CMTDID is a form of Charcot-Marie-Tooth disease characterized by features intermediate between demyelinating and axonal peripheral neuropathies, and motor median nerve conduction velocities ranging from 25 to 45 m/sec.</p> <p>Defects in MPZ are a cause of Dejerine-Sottas syndrome (DSS) [MIM:145900]; also known as Dejerine-Sottas neuropathy (DSN) or hereditary motor and sensory neuropathy III (HMSN3). DSS is a severe degenerating neuropathy of the demyelinating Charcot-Marie-Tooth disease category, with onset by age 2 years. DSS is characterized by motor and sensory neuropathy with very slow nerve conduction velocities, increased cerebrospinal fluid protein concentrations, hypertrophic nerve changes, delayed age of walking as well as areflexia. There are both autosomal dominant and autosomal recessive forms of Dejerine-Sottas syndrome.</p> <p>Defects in MPZ are a cause of congenital hypomyelination neuropathy (CHN) [MIM:605253]. CHN is characterized clinically by early onset of hypotonia, areflexia, distal muscle weakness, and very slow nerve conduction velocities.</p>

Defects in MPZ are a cause of Roussy-Levy syndrome (ROULS) [MIM:180800]; also known as Roussy-Levy hereditary areflexic dystasia. This autosomal dominant disorder resembles Charcot-Marie-Tooth disease type 1 in that it presents with foot deformity, weakness and atrophy of distal limb muscles, especially the peronei, and absent tendon reflexes. The phenotype differs, however, in that it includes static tremor of the upper limbs and gait ataxia.

#### 配列類似性

Belongs to the myelin P0 protein family.

Contains 1 Ig-like V-type (immunoglobulin-like) domain.

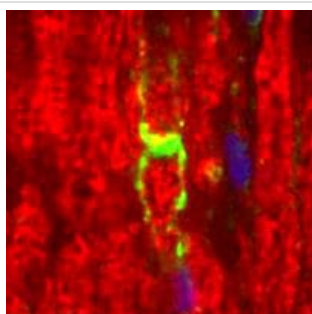
#### 翻訳後修飾

N-glycosylated; contains sulfate-substituted glycan.

#### 細胞内局在

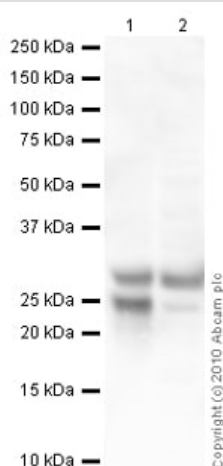
Membrane.

#### 画像



Immunohistochemistry (Frozen sections) - Anti-Myelin Protein Zero antibody (ab39375)

A tissue section through an adult sciatic nerve. Myelin Protein Zero (green staining) can be seen in the myelin and Schwann cell processes surrounding the nodes of Ranvier. In this photomicrograph, rabbit antibodies against LAMP (lysozyme-associated membrane glycoprotein) (red staining) serves as the counterstain, and DAPI (blue staining) allows visualization of nuclei.



Western blot - Anti-Myelin Protein Zero antibody (ab39375)

**All lanes :** Anti-Myelin Protein Zero antibody (ab39375) at 1 µg/ml

**Lane 1 :** Human spinal cord tissue lysate - total protein ([ab29188](#))

**Lane 2 :** Spinal Cord (Mouse) Tissue Lysate

Lysates/proteins at 10 µg per lane.

#### Secondary

**All lanes :** Goat polyclonal Secondary Antibody to Chicken IgY - H&L (HRP) at 1/3000 dilution

Developed using the ECL technique.

Performed under reducing conditions.

**Predicted band size:** 28 kDa

**Observed band size:** 25,28 kDa

**Exposure time:** 30 seconds

The band observed at 25 kDa could potentially be a cleaved form of Myelin Protein Zero due to the presence of a 29 amino acid signal peptide.

**Please note:** All products are "FOR RESEARCH USE ONLY. NOT FOR USE IN DIAGNOSTIC PROCEDURES"

### **Our Abpromise to you: Quality guaranteed and expert technical support**

---

- Replacement or refund for products not performing as stated on the datasheet
- Valid for 12 months from date of delivery
- Response to your inquiry within 24 hours
- We provide support in Chinese, English, French, German, Japanese and Spanish
- Extensive multi-media technical resources to help you
- We investigate all quality concerns to ensure our products perform to the highest standards

If the product does not perform as described on this datasheet, we will offer a refund or replacement. For full details of the Abpromise, please visit <https://www.abcam.co.jp/abpromise> or contact our technical team.

### **Terms and conditions**

---

- Guarantee only valid for products bought direct from Abcam or one of our authorized distributors