


Anti-Myelin oligodendrocyte glycoprotein antibody ab32760

★★★★★ [2 Abreviews](#) [25 References](#) [画像数 3](#)

製品の概要

製品名	Anti-Myelin oligodendrocyte glycoprotein antibody
製品の詳細	Rabbit polyclonal to Myelin oligodendrocyte glycoprotein
由来種	Rabbit
特異性	Replenishment batches of our polyclonal antibody, ab32760 are tested in WB. Previous batches were additionally validated in IHC-FoFr and IP. These applications are still expected to work and are covered by our Abpromise guarantee. You may also be interested in our alternative recombinant antibody, ab233549 .
アプリケーション	適用あり: WB, IHC-FoFr, IP
種交差性	交差種: Mouse, Rat 交差が予測される動物種: Cow, Human, Common marmoset 
免疫原	Synthetic peptide corresponding to Rat Myelin oligodendrocyte glycoprotein aa 200 to the C-terminus (C terminal) conjugated to keyhole limpet haemocyanin. (Peptide available as ab32759)
特記事項	<p>The Life Science industry has been in the grips of a reproducibility crisis for a number of years. Abcam is leading the way in addressing this with our range of recombinant monoclonal antibodies and knockout edited cell lines for gold-standard validation. Please check that this product meets your needs before purchasing.</p> <p>If you have any questions, special requirements or concerns, please send us an inquiry and/or contact our Support team ahead of purchase. Recommended alternatives for this product can be found below, along with publications, customer reviews and Q&As</p>

製品の特性

製品の状態	Liquid
保存方法	Shipped at 4°C. Store at +4°C short term (1-2 weeks). Upon delivery aliquot. Store at -20°C or -80°C. Avoid freeze / thaw cycle.
バッファー	pH: 7.40 Preservative: 0.02% Sodium azide Constituent: PBS

Batches of this product that have a concentration < 1mg/ml may have BSA added as a stabilising agent. If you would like information about the formulation of a specific lot, please contact our

	scientific support team who will be happy to help.
精製度	Immunogen affinity purified
ポリ/モノ	ポリクローナル
アイソタイプ	IgG

アプリケーション

The Abpromise guarantee **Abpromise保証は、** 次のテスト済みアプリケーションにおけるab32760の使用に適用されます
 アプリケーションノートには、推奨の開始希釈率がありますが、適切な希釈率につきましてはご検討ください。

アプリケーション	Abreviews	特記事項
WB	★★★★★ (1)	Use a concentration of 1 µg/ml. Detects a band of approximately 27 kDa (predicted molecular weight: 27 kDa).
IHC-FoFr	★★★★★ (1)	Use at an assay dependent concentration.
IP		Use a concentration of 5 µg/ml.

ターゲット情報

機能	Mediates homophilic cell-cell adhesion (By similarity). Minor component of the myelin sheath. May be involved in completion and/or maintenance of the myelin sheath and in cell-cell communication.
組織特異性	Found exclusively in the CNS, where it is localized on the surface of myelin and oligodendrocyte cytoplasmic membranes.
配列類似性	Belongs to the immunoglobulin superfamily. BTN/MOG family. Contains 1 Ig-like V-type (immunoglobulin-like) domain.
細胞内局在	Cell membrane.

画像



Western blot - Anti-Myelin oligodendrocyte glycoprotein antibody (ab32760)

All lanes : Anti-Myelin oligodendrocyte glycoprotein antibody (ab32760) at 1 µg/ml

Lane 1 : Mouse Brain Whole Tissue Lysate

Lane 2 : Rat Brain Whole Tissue Lysate

Lysates/proteins at 20 µg per lane.

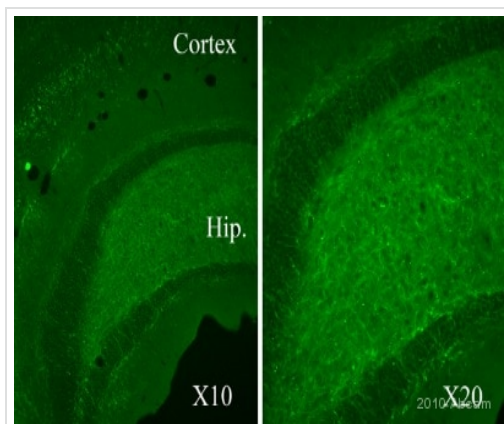
Secondary

All lanes : IR Dye 680 Conjugated Goat Anti-Rabbit IgG (H+L) at 1/15000 dilution

Performed under reducing conditions.

Predicted band size: 27 kDa

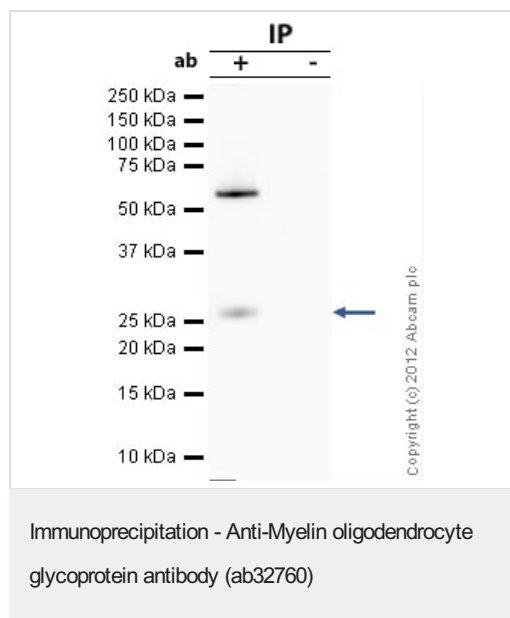
Observed band size: 27 kDa



Immunohistochemistry (PFA perfusion fixed frozen sections) - Anti-Myelin oligodendrocyte glycoprotein antibody (ab32760)

Image courtesy of Abreview from Sophie Pezet

Ab32760 used on Mouse Cortex and Hippocampus in free floating sections using direct fluorescence. The tissues were fixed (animals perfused fixed) with 4% PFA and later postfixed overnight in the same fixative. They were cryoprotected in 30% sucrose and cut using a cryostat.



Myelin oligodendrocyte glycoprotein was immunoprecipitated using 0.5mg Mouse Brain tissue lysate, 5µg of Rabbit polyclonal to Myelin oligodendrocyte glycoprotein and 50µl of protein G magnetic beads (+). No antibody was added to the control (-).

The antibody was incubated under agitation with Protein G beads for 10min, Mouse Brain tissue lysate lysate diluted in RIPA buffer was added to each sample and incubated for a further 10min under agitation.

Proteins were eluted by addition of 40µl SDS loading buffer and incubated for 10min at 70°C; 10µl of each sample was separated on a SDS PAGE gel, transferred to a nitrocellulose membrane, blocked with 5% BSA and probed with ab32760.

Secondary: Mouse monoclonal [SB62a] Secondary Antibody to Rabbit IgG light chain (HRP) ([ab99697](#)).

Band: 27kDa: Myelin oligodendrocyte glycoprotein

Please note: All products are "FOR RESEARCH USE ONLY. NOT FOR USE IN DIAGNOSTIC PROCEDURES"

Our Abpromise to you: Quality guaranteed and expert technical support

- Replacement or refund for products not performing as stated on the datasheet
- Valid for 12 months from date of delivery
- Response to your inquiry within 24 hours
- We provide support in Chinese, English, French, German, Japanese and Spanish
- Extensive multi-media technical resources to help you
- We investigate all quality concerns to ensure our products perform to the highest standards

If the product does not perform as described on this datasheet, we will offer a refund or replacement. For full details of the Abpromise, please visit <https://www.abcam.co.jp/abpromise> or contact our technical team.

Terms and conditions

- Guarantee only valid for products bought direct from Abcam or one of our authorized distributors