

Anti-Myc tag antibody - ChIP Grade ab9132

★★★★★ [7 Abreviews](#) [143 References](#) [画像数 2](#)

製品の概要

製品名	Anti-Myc tag antibody - ChIP Grade
製品の詳細	Goat polyclonal to Myc tag
由来種	Goat
特異性	Antibody was verified by ELISA against peptide conjugated to BSA (EQKLISEEDL /BSA).
アプリケーション	適用あり: IP, ChIP, WB, ICC, ELISA
免疫原	Synthetic peptide: EQKLISEEDL (c-myc) conjugated to KLH.

 [Run BLAST with](#)

 [Run BLAST with](#)

特記事項

The Life Science industry has been in the grips of a reproducibility crisis for a number of years. Abcam is leading the way in addressing this with our range of recombinant monoclonal antibodies and knockout edited cell lines for gold-standard validation. Please check that this product meets your needs before purchasing.

If you have any questions, special requirements or concerns, please send us an inquiry and/or contact our Support team ahead of purchase. Recommended alternatives for this product can be found below, along with publications, customer reviews and Q&As

製品の特性

製品の状態	Liquid
保存方法	Shipped at 4°C. Store at +4°C short term (1-2 weeks). Upon delivery aliquot. Store at -20°C. Avoid freeze / thaw cycle.
バッファー	pH: 6.80 Preservative: 0.1% Sodium azide Constituent: 99% PBS
精製度	Immunogen affinity purified
特記事項(精製)	Antibodies were affinity purified using the peptide immobilized on solid support. Antibody concentration was determined by extinction coefficient: absorbance at 280 nm of 1.4 equals 1.0 mg of IgG.
ポリ/モノ	ポリクローナル
アイソタイプ	IgG

アプリケーション

The Abpromise guarantee **Abpromise保証は、次のテスト済みアプリケーションにおけるab9132の使用に適用されます**
アプリケーションノートには、推奨の開始希釈率がありますが、適切な希釈率につきましてはご確認ください。

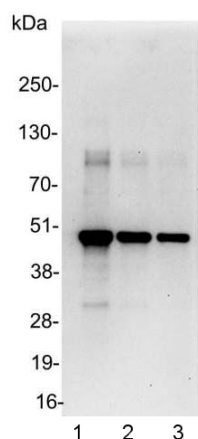
アプリケーション	Abreviews	特記事項
IP		Use at 1-4 µg/mg of lysate. Also PubMed: 20224777
ChIP	★★★★★ (2)	Use at an assay dependent concentration. ChIP was performed with 25 ug chromatin, 5ug of antibody and 20 ul of Protein A/G beads.
WB	★★★★★ (3)	1/1000 - 1/30000.
ICC		1/200 - 1/2000.
ELISA		1/100 - 1/500.

ターゲット情報

関連性 Epitope tags are short peptide sequences that are easily recognized by tag-specific antibodies. Due to their small size, epitope tags do not affect the tagged protein's biochemical properties. Most often sequences encoding the epitope tag are included with target DNA at the time of cloning to produce fusion proteins containing the epitope tag sequence. This allows anti-epitope tag antibodies to serve as universal detection reagents for any tag containing protein produced by recombinant means. This means that anti-epitope tag antibodies are a useful alternative to generating specific antibodies to identify, immunoprecipitate or immunoaffinity purify a recombinant protein. The anti-epitope tag antibody is usually functional in a variety of antibody-dependent experimental procedures. Expression vectors producing epitope tag fusion proteins are available for a variety of host expression systems including bacteria, yeast, insect and mammalian cells.

細胞内局在 Nuclear

画像



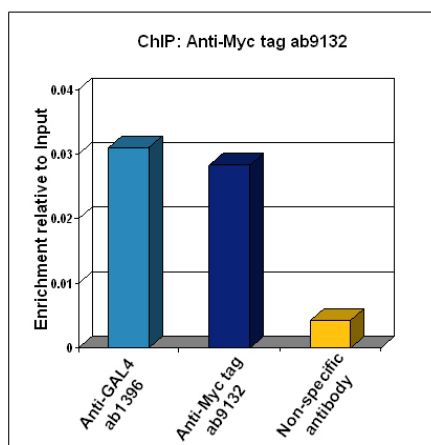
Western blot - Anti-Myc tag antibody - ChIP Grade (ab9132)

All lanes : Anti-Myc tag antibody - ChIP Grade (ab9132) at 0.04 $\mu\text{g/ml}$

Lane 1 : E. coli whole cell lysate at 0.2 μg

Lane 2 : E. coli whole cell lysate at 0.1 μg

Lane 3 : E. coli whole cell lysate at 0.05 μg



ChIP - Anti-Myc tag antibody - ChIP Grade (ab9132)

A stably transfected 293T human cell line harbouring the GAL4 upstream activation sequence was transiently transfected with a Myc or His - tagged GAL4 DNA Binding Domain construct. 48 hours post transfection Chromatin was prepared according to the Abcam X-ChIP protocol. The ChIP was performed with 25 μg chromatin, 5 μg of antibody and 20 μl of Protein A/G beads. A non-specific antibody was used as the negative control. The immunoprecipitated DNA was quantified by real time PCR (SYBR Green approach).

Please note: All products are "FOR RESEARCH USE ONLY. NOT FOR USE IN DIAGNOSTIC PROCEDURES"

Our Abpromise to you: Quality guaranteed and expert technical support

- Replacement or refund for products not performing as stated on the datasheet
- Valid for 12 months from date of delivery
- Response to your inquiry within 24 hours

- We provide support in Chinese, English, French, German, Japanese and Spanish
- Extensive multi-media technical resources to help you
- We investigate all quality concerns to ensure our products perform to the highest standards

If the product does not perform as described on this datasheet, we will offer a refund or replacement. For full details of the Abpromise, please visit <https://www.abcam.co.jp/abpromise> or contact our technical team.

Terms and conditions

- Guarantee only valid for products bought direct from Abcam or one of our authorized distributors