


# Anti-Muscarinic Acetylcholine Receptor M3/CHRM3 antibody ab60981

[1 References](#) [画像数 1](#)

### 製品の概要

製品名	Anti-Muscarinic Acetylcholine Receptor M3/CHRM3 antibody
製品の詳細	Rabbit polyclonal to Muscarinic Acetylcholine Receptor M3/CHRM3
由来種	Rabbit
アプリケーション	<b>適用あり:</b> IHC-P
種交差性	<b>交差種:</b> Human <b>交差が予測される動物種:</b> Sheep, Horse, Hamster, Cow, Pig, Chimpanzee, Monkey, Gorilla, Common marmoset, Orangutan, Elephant 
免疫原	Synthetic peptide corresponding to Human Muscarinic Acetylcholine Receptor M3/CHRM3.
ポジティブ・コントロール	Heart tissue
特記事項	<p>The Life Science industry has been in the grips of a reproducibility crisis for a number of years. Abcam is leading the way in addressing this with our range of recombinant monoclonal antibodies and knockout edited cell lines for gold-standard validation. Please check that this product meets your needs before purchasing.</p> <p>If you have any questions, special requirements or concerns, please send us an inquiry and/or contact our Support team ahead of purchase. Recommended alternatives for this product can be found below, along with publications, customer reviews and Q&amp;As</p>

### 製品の特性

製品の状態	Liquid
保存方法	Shipped at 4°C. Store at +4°C short term (1-2 weeks). Upon delivery aliquot. Store at -20°C or -80°C. Avoid freeze / thaw cycle.
バッファー	pH: 7.70 Preservative: 0.1% Sodium azide Constituent: PBS
精製度	Immunogen affinity purified
特記事項(精製)	ab60981 was purified by peptide immunogen affinity column.
ポリクローナル	ポリクローナル
アイソタイプ	IgG

## アプリケーション

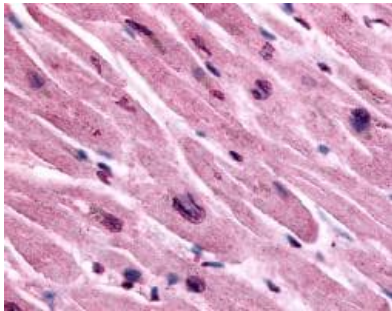
**The Abpromise guarantee** Abpromise保証は、次のテスト済みアプリケーションにおけるab60981の使用に適用されず  
アプリケーションノートには、推奨の開始希釈率がありますが、適切な希釈率につきましてはご検討ください。

アプリケーション	Abreviews	特記事項
IHC-P		Use a concentration of 10 µg/ml. Perform heat mediated antigen retrieval with citrate buffer pH 6 before commencing with IHC staining protocol.

## ターゲット情報

機能	The muscarinic acetylcholine receptor mediates various cellular responses, including inhibition of adenylate cyclase, breakdown of phosphoinositides and modulation of potassium channels through the action of G proteins. Primary transducing effect is Pi turnover.
配列類似性	Belongs to the G-protein coupled receptor 1 family. Muscarinic acetylcholine receptor subfamily. CHRM3 sub-subfamily.
細胞内局在	Cell membrane. Cell junction > synapse > postsynaptic cell membrane. Basolateral cell membrane.

## 画像



Immunohistochemical analysis of formalin-fixed, paraffin-embedded Human heart tissue, staining Muscarinic Acetylcholine Receptor M3/CHRM3 with ab60981 at 10 µg/ml.

Immunohistochemistry (Formalin/PFA-fixed paraffin-embedded sections) - Anti-Muscarinic Acetylcholine Receptor M3/CHRM3 antibody (ab60981)

**Please note:** All products are "FOR RESEARCH USE ONLY. NOT FOR USE IN DIAGNOSTIC PROCEDURES"

## Our Abpromise to you: Quality guaranteed and expert technical support

- Replacement or refund for products not performing as stated on the datasheet
- Valid for 12 months from date of delivery
- Response to your inquiry within 24 hours

- We provide support in Chinese, English, French, German, Japanese and Spanish
- Extensive multi-media technical resources to help you
- We investigate all quality concerns to ensure our products perform to the highest standards

If the product does not perform as described on this datasheet, we will offer a refund or replacement. For full details of the Abpromise, please visit <https://www.abcam.co.jp/abpromise> or contact our technical team.

### **Terms and conditions**

---

- Guarantee only valid for products bought direct from Abcam or one of our authorized distributors