

Anti-Mupp1 antibody ab101276

画像数 2

製品の概要

製品名	Anti-Mupp1 antibody
製品の詳細	Rabbit polyclonal to Mupp1
由来種	Rabbit
アプリケーション	適用あり: WB, IP
種交差性	交差種: Human 交差が予測される動物種: Chimpanzee 
免疫原	Other Immunogen Type corresponding to Human Mupp1 aa 750-850. Database link: O75970
ポジティブ・コントロール	HeLa whole cell lysate (ab150035)
特記事項	<p>The Life Science industry has been in the grips of a reproducibility crisis for a number of years. Abcam is leading the way in addressing this with our range of recombinant monoclonal antibodies and knockout edited cell lines for gold-standard validation. Please check that this product meets your needs before purchasing.</p> <p>If you have any questions, special requirements or concerns, please send us an inquiry and/or contact our Support team ahead of purchase. Recommended alternatives for this product can be found below, along with publications, customer reviews and Q&As</p>

製品の特性

製品の状態	Liquid
保存方法	Shipped at 4°C. Upon delivery aliquot and store at -20°C. Avoid freeze / thaw cycles.
バッファー	pH: 7 Preservative: 0.09% Sodium azide Constituent: Tris citrate/phosphate
精製度	Immunogen affinity purified
特記事項(精製)	ab101276 was affinity purified using an epitope specific to Mupp1 immobilized on solid support.
ポリモノ	ポリクローナル
アイソタイプ	IgG

アプリケーション

The Abpromise guarantee **Abpromise保証は、** 次のテスト済みアプリケーションにおけるab101276の使用に適用されます
 アプリケーションノートには、推奨の開始希釈率がありますが、適切な希釈率につきましてはご検討ください。

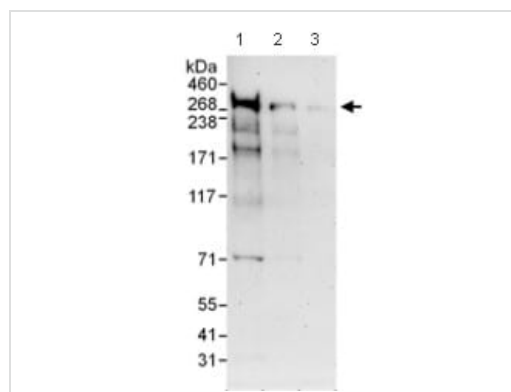
アプリケーション	Abreviews	特記事項
WB		1/2000 - 1/10000. Predicted molecular weight: 219 kDa.
IP		Use at 2-5 µg/mg of lysate.

ターゲット情報

関連性 MUPP1 was first identified as a protein interacting with type 2C serotonin receptor. It acts as a scaffolding protein at tight junctions where it has been reported to interact with integral proteins, anchoring them to the F-actin cytoskeleton. It is also thought to be important in the osmotic stress response in kidney cells and has been shown to play a role in promoting G protein coupling to receptors.

細胞内局在 Plasma membrane

画像



Western blot - Anti-Mupp1 antibody (ab101276)

All lanes : Anti-Mupp1 antibody (ab101276) at 0.1 µg/ml

Lane 1 : HeLa whole cell lysate at 50 µg

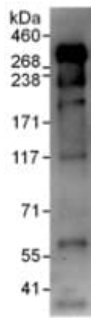
Lane 2 : HeLa whole cell lysate at 15 µg

Lane 3 : HeLa whole cell lysate at 5 µg

Developed using the ECL technique.

Predicted band size: 219 kDa

Exposure time: 3 minutes



Immunoprecipitation - Anti-Mupp1 antibody
(ab101276)

Detection of Mupp1 by Western Blot of Immunoprecipitate.
ab101276, at 1 µg/ml, staining Mupp1 in HeLa whole cell lysate immunoprecipitated using ab101276 at 3 µg/mg lysate (1 mg/IP; 20% of IP loaded/lane). Detection: Chemiluminescence with exposure time of 3 minutes.

Please note: All products are "FOR RESEARCH USE ONLY. NOT FOR USE IN DIAGNOSTIC PROCEDURES"

Our Abpromise to you: Quality guaranteed and expert technical support

- Replacement or refund for products not performing as stated on the datasheet
- Valid for 12 months from date of delivery
- Response to your inquiry within 24 hours
- We provide support in Chinese, English, French, German, Japanese and Spanish
- Extensive multi-media technical resources to help you
- We investigate all quality concerns to ensure our products perform to the highest standards

If the product does not perform as described on this datasheet, we will offer a refund or replacement. For full details of the Abpromise, please visit <https://www.abcam.co.jp/abpromise> or contact our technical team.

Terms and conditions

- Guarantee only valid for products bought direct from Abcam or one of our authorized distributors