

Anti-Mucin 5AC antibody [2-11M1] ab24071

24 References [画像数 1](#)

製品の概要

製品名	Anti-Mucin 5AC antibody [2-11M1]
製品の詳細	Mouse monoclonal [2-11M1] to Mucin 5AC
由来種	Mouse
アプリケーション	適用あり: Flow Cyt
種交差性	交差種: Human
免疫原	Mucin isolated from an ovarian cyst fluid (pure endocervical type according to the Fenoglio's classification) Human.

特記事項

This antibody reacts with peptide core of gastric mucin restricted to the surface gastric epithelium. It characterised the M1-b epitope, completely destroyed by b-mercapto-ethano. The M1-b epitope is found located on a 58 kD and 40 kD peptide after trypsin treatment of native M1 mucin. This M1-b epitope coprecipitates with the M1-f epitope encoded by Mucin 5AC gene. It is probably associated with the gastric mucin encoded by Mucin 5AC gene or with a gastric mucin encoded by another gastric MUC gene which polymerized with the M1/Mucin 5AC gastric mucin.

The Life Science industry has been in the grips of a reproducibility crisis for a number of years. Abcam is leading the way in addressing this with our range of recombinant monoclonal antibodies and knockout edited cell lines for gold-standard validation. Please check that this product meets your needs before purchasing.

If you have any questions, special requirements or concerns, please send us an inquiry and/or contact our Support team ahead of purchase. Recommended alternatives for this product can be found below, along with publications, customer reviews and Q&As

製品の特性

製品の状態	Liquid
保存方法	Shipped at 4°C. Store at +4°C short term (1-2 weeks). Upon delivery aliquot. Store at -20°C long term.
バッファー	pH: 7.3 Preservative: 0.05% Sodium azide Constituent: PBS
精製度	Protein G purified

一次抗体 備考

This antibody reacts with peptide core of gastric mucin restricted to the surface gastric epithelium. It characterised the M1-b epitope, completely destroyed by b-mercapto-ethano. The M1-b epitope is found located on a 58 kD and 40 kD peptide after trypsin treatment of native M1 mucin. This M1-b epitope coprecipitates with the M1-f epitope encoded by Mucin 5AC gene. It is probably associated with the gastric mucin encoded by Mucin 5AC gene or with a gastric mucin encoded by another gastric MUC gene which polymerized with the M1/Mucin 5AC gastric mucin.

ポリ/モノ

モノクローナル

クローン名

2-11M1

ミエローマ

Sp2/0

アイソタイプ

IgG1

軽鎖の種類

kappa

アプリケーション

The Abpromise guarantee

Abpromise保証は、次のテスト済みアプリケーションにおけるab24071の使用に適用されます

アプリケーションノートには、推奨の開始希釈率がありますが、適切な希釈率につきましてはご検討ください。

アプリケーション	Abreviews	特記事項
Flow Cyt		Use 2µg for 10 ⁶ cells. ab170190 - Mouse monoclonal IgG1, is suitable for use as an isotype control with this antibody.

ターゲット情報

機能

Gel-forming glycoprotein of gastric and respiratory tract epithelia that protects the mucosa from infection and chemical damage by binding to inhaled microorganisms and particles that are subsequently removed by the mucociliary system.

組織特異性

Highly expressed in surface mucosal cells of respiratory tract and stomach epithelia. Overexpressed in a number of carcinomas. Also expressed in Barrett's esophagus epithelium and in the proximal duodenum.

配列類似性

Contains 1 CTCK (C-terminal cystine knot-like) domain.
Contains 3 TIL (trypsin inhibitory-like) domains.
Contains 4 VWFC domains.
Contains 4 VWFD domains.

ドメイン

The cysteine residues in the Cys-rich subdomain repeats are not involved in disulfide bonding.

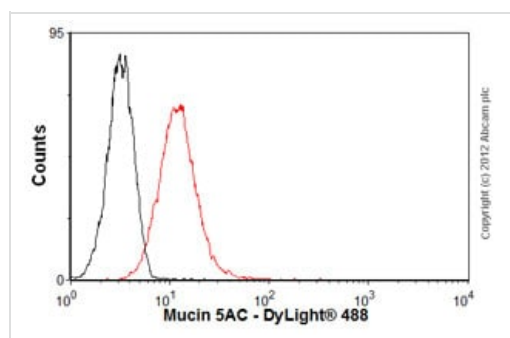
翻訳後修飾

C-, O- and N-glycosylated. O-glycosylated on the Thr-/Ser-rich tandem repeats. C-mannosylation in the Cys-rich subdomains may be required for proper folding of these regions and for export from the endoplasmic reticulum during biosynthesis.
Proteolytic cleavage in the C-terminal is initiated early in the secretory pathway and does not involve a serine protease. The extent of cleavage is increased in the acidic parts of the secretory pathway. Cleavage generates a reactive group which could link the protein to a primary amide.

細胞内局在

Secreted.

画像



Flow Cytometry - Anti-Mucin 5AC antibody [2-11M1]
(ab24071)

Overlay histogram showing A549 cells stained with ab24071 (red line). The cells were fixed with 80% methanol (5 min) and then permeabilized with 0.1% PBS-Tween for 20 min. The cells were then incubated in 1x PBS / 10% normal goat serum / 0.3M glycine to block non-specific protein-protein interactions followed by the antibody (ab24071, 2µg/1x10⁶ cells) for 30 min at 22°C. The secondary antibody used was DyLight® 488 goat anti-mouse IgG (H+L) (**ab96879**) at 1/500 dilution for 30 min at 22°C. Isotype control antibody (black line) was mouse IgG1 [ICIGG1] (**ab91353**, 2µg/1x10⁶ cells) used under the same conditions. Acquisition of >5,000 events was performed.

Please note: All products are "FOR RESEARCH USE ONLY. NOT FOR USE IN DIAGNOSTIC PROCEDURES"

Our Abpromise to you: Quality guaranteed and expert technical support

- Replacement or refund for products not performing as stated on the datasheet
- Valid for 12 months from date of delivery
- Response to your inquiry within 24 hours
- We provide support in Chinese, English, French, German, Japanese and Spanish
- Extensive multi-media technical resources to help you
- We investigate all quality concerns to ensure our products perform to the highest standards

If the product does not perform as described on this datasheet, we will offer a refund or replacement. For full details of the Abpromise, please visit <https://www.abcam.co.jp/abpromise> or contact our technical team.

Terms and conditions

- Guarantee only valid for products bought direct from Abcam or one of our authorized distributors