

### Anti-MUC13 antibody ab65109

★★★★★ [2 Abreviews](#) [5 References](#) [画像数 4](#)

#### 製品の概要

製品名	Anti-MUC13 antibody
製品の詳細	Rabbit polyclonal to MUC13
由来種	Rabbit
アプリケーション	<b>適用あり:</b> ELISA, IHC-P, WB, ICC/IF
種交差性	<b>交差種:</b> Human
免疫原	Synthetic peptide (Human) from an internal sequence.
ポジティブ・コントロール	WB: Extracts from COLO, 293 and HeLa cells. IHC-P: Human colon carcinoma tissue. IF: HepG2 cells.
特記事項	<p>The Life Science industry has been in the grips of a reproducibility crisis for a number of years. Abcam is leading the way in addressing this with our range of recombinant monoclonal antibodies and knockout edited cell lines for gold-standard validation. Please check that this product meets your needs before purchasing.</p> <p>If you have any questions, special requirements or concerns, please send us an inquiry and/or contact our Support team ahead of purchase. Recommended alternatives for this product can be found below, along with publications, customer reviews and Q&amp;As</p>

#### 製品の特性

製品の状態	Liquid
保存方法	Shipped at 4°C. Store at -20°C. Stable for 12 months at -20°C.
バッファー	<p>pH: 7.40</p> <p>Preservative: 0.02% Sodium azide</p> <p>Constituents: PBS, 50% Glycerol (glycerin, glycerine), 0.87% Sodium chloride</p>
精製度	Immunogen affinity purified
特記事項(精製)	The antibody was affinity purified from rabbit antiserum by affinity chromatography using epitope specific immunogen.
ポリ/モノ	ポリクローナル
アイソタイプ	IgG

#### アプリケーション

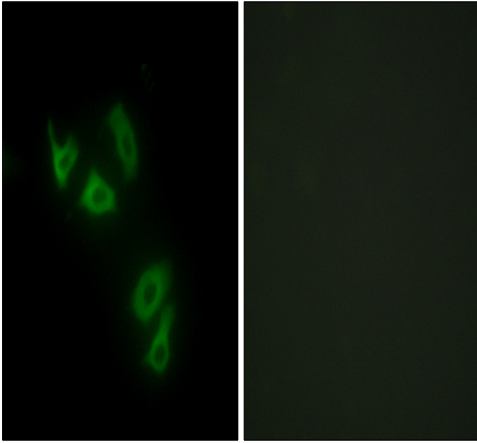
**The Abpromise guarantee**      **Abpromise保証は、次のテスト済みアプリケーションにおけるab65109の使用に適用されます**  
 アプリケーションノートには、推奨の開始希釈率がありますが、適切な希釈率につきましてはご検討ください。

アプリケーション	Abreviews	特記事項
ELISA		Use at an assay dependent concentration.
IHC-P	★★★★★ (1)	1/100. Perform heat mediated antigen retrieval with citrate buffer pH 6 before commencing with IHC staining protocol.
WB	★★★★★ (1)	1/500 - 1/1000. Detects a band of approximately 55 kDa (predicted molecular weight: 55 kDa).
ICC/IF		1/500 - 1/1000.

## ターゲット情報

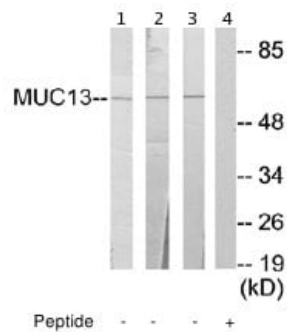
機能	Epithelial and hemopoietic transmembrane mucin that may play a role in cell signaling.
組織特異性	Highly expressed in epithelial tissues, particularly those of the gastrointestinal and respiratory tracts, such as large intestine and trachea, followed by kidney, small intestine, appendix and stomach.
配列類似性	Contains 3 EGF-like domains. Contains 1 SEA domain.
翻訳後修飾	Cleaved into two subunits, alpha and beta, probably between the first EGF domain and the SEA domain. Beta subunit contains the cytoplasmic tail and alpha subunit the extracellular tail. The homo-oligomerization into dimers is dependent on intrachain disulfide bonds. Highly N-glycosylated.
細胞内局在	Cell membrane. Secreted. Also exists as a soluble form.

## 画像



Immunocytochemistry/ Immunofluorescence - Anti-MUC13 antibody (ab65109)

Immunofluorescence analysis of HepG2 cells, using MUC13 antibody. The picture on the right is blocked with synthesized peptide.



Western blot - Anti-MUC13 antibody (ab65109)

**All lanes :** Anti-MUC13 antibody (ab65109) at 1/500 dilution

**Lane 1 :** extracts from COLO cells

**Lane 2 :** extracts from 293 cells

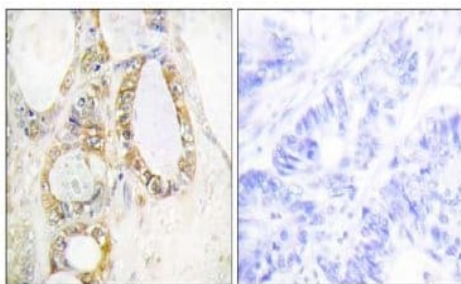
**Lane 3 :** extracts from HeLa cells

**Lane 4 :** extracts from HeLa cells with immunising peptide at 5 µg

Lysates/proteins at 5 µg per lane.

**Predicted band size:** 55 kDa

**Observed band size:** 55 kDa



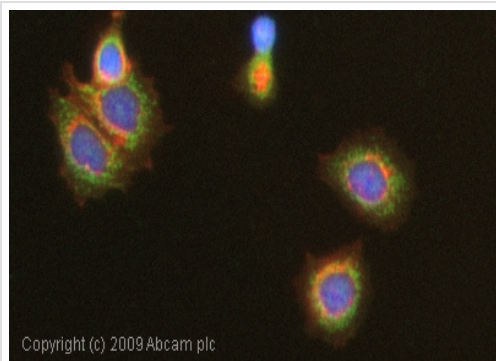
Peptide - +

Immunohistochemistry (Formalin/PFA-fixed paraffin-embedded sections) - Anti-MUC13 antibody (ab65109)

Secondary antibody - anti-rabbit HRP (ab6721)

Immunohistochemical analysis of paraffin-embedded human colon carcinoma tissue labelling MUC13 with ab65109.

The picture on the right is blocked with the synthesized peptide.



Immunocytochemistry/ Immunofluorescence - Anti-MUC13 antibody (ab65109)

ICC/IF image of ab65109 stained HepG2 cells. The cells were 4% formaldehyde fixed (10 min) and then incubated in 1%BSA / 10% normal goat serum / 0.3M glycine in 0.1% PBS-Tween for 1h to permeabilise the cells and block non-specific protein-protein interactions. The cells were then incubated with the antibody (ab65109, 1µg/ml) overnight at +4°C. The secondary antibody (green) was Alexa Fluor® 488 goat anti-rabbit IgG (H+L) used at a 1/1000 dilution for 1h. Alexa Fluor® 594 WGA was used to label plasma membranes (red) at a 1/200 dilution for 1h. DAPI was used to stain the cell nuclei (blue) at a concentration of 1.43µM.

**Please note:** All products are "FOR RESEARCH USE ONLY. NOT FOR USE IN DIAGNOSTIC PROCEDURES"

### Our Abpromise to you: Quality guaranteed and expert technical support

---

- Replacement or refund for products not performing as stated on the datasheet
- Valid for 12 months from date of delivery
- Response to your inquiry within 24 hours
- We provide support in Chinese, English, French, German, Japanese and Spanish
- Extensive multi-media technical resources to help you
- We investigate all quality concerns to ensure our products perform to the highest standards

If the product does not perform as described on this datasheet, we will offer a refund or replacement. For full details of the Abpromise, please visit <https://www.abcam.co.jp/abpromise> or contact our technical team.

### Terms and conditions

---

- Guarantee only valid for products bought direct from Abcam or one of our authorized distributors