

Anti-mtTFA antibody [18G102B2E11] - Mitochondrial Marker ab119684

★★★★★ [1 Abreviews](#) [23 References](#) [画像数 4](#)

製品の概要

製品名	Anti-mtTFA antibody [18G102B2E11] - Mitochondrial Marker
製品の詳細	Mouse monoclonal [18G102B2E11] to mtTFA - Mitochondrial Marker
由来種	Mouse
アプリケーション	適用あり: IHC-P, WB, Flow Cyt, ICC/IF
種交差性	交差種: Human, Recombinant fragment 非交差種: Mouse, Rat
免疫原	Full length protein. This information is proprietary to Abcam and/or its suppliers.
ポジティブ・コントロール	IHC-P: human liver FFPE tissue sections
特記事項	<p>This antibody clone is manufactured by Abcam. If you require a custom buffer formulation or conjugation for your experiments, please contact orders@abcam.com.</p> <p>The Life Science industry has been in the grips of a reproducibility crisis for a number of years. Abcam is leading the way in addressing this with our range of recombinant monoclonal antibodies and knockout edited cell lines for gold-standard validation. Please check that this product meets your needs before purchasing.</p> <p>If you have any questions, special requirements or concerns, please send us an inquiry and/or contact our Support team ahead of purchase. Recommended alternatives for this product can be found below, along with publications, customer reviews and Q&As</p> <p>Product was previously marketed under the MitoSciences sub-brand.</p>

製品の特性

製品の状態	Liquid
保存方法	Shipped at 4°C. Store at +4°C. Do Not Freeze.
バッファー	pH: 7.5 Preservative: 0.02% Sodium azide Constituent: HEPES buffered saline
精製度	Ammonium Sulphate Precipitation
特記事項 (精製)	Purity is near homogeneity as judged by SDS-PAGE. ab119684 was produced in vitro using

hybridomas grown in serum-free medium, and then concentrated by ammonium sulfate precipitation.

ポリ/モノ	モノクローナル
クローン名	18G102B2E11
アイソタイプ	IgG2b
軽鎖の種類	kappa

アプリケーション

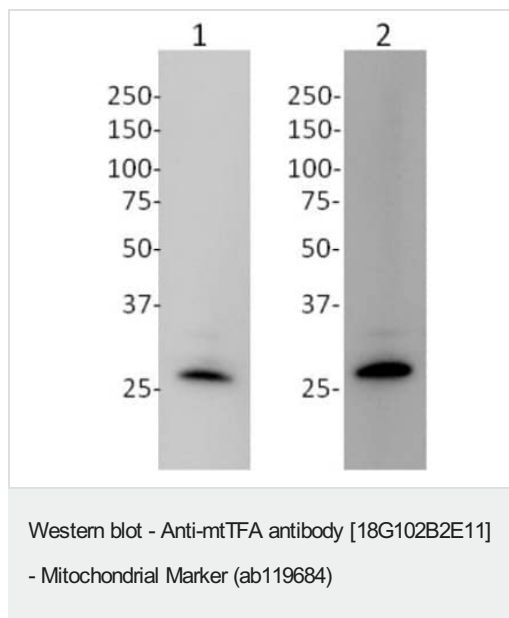
The Abpromise guarantee **Abpromise保証は、次のテスト済みアプリケーションにおけるab119684の使用に適用されます**
アプリケーションノートには、推奨の開始希釈率がありますが、適切な希釈率につきましてはご確認ください。

アプリケーション	Abreviews	特記事項
IHC-P		Use a concentration of 5 µg/ml. Perform heat mediated antigen retrieval before commencing with IHC staining protocol.
WB	★★★★★ (1)	Use a concentration of 1 µg/ml. Predicted molecular weight: 29 kDa.
Flow Cyt		Use a concentration of 1 µg/ml. ab170192 - Mouse monoclonal IgG2b, is suitable for use as an isotype control with this antibody.
ICC/IF		Use a concentration of 1 µg/ml.

ターゲット情報

機能	Binds to the mitochondrial light strand promoter and functions in mitochondrial transcription regulation. Required for accurate and efficient promoter recognition by the mitochondrial RNA polymerase. Promotes transcription initiation from the HSP1 and the light strand promoter by binding immediately upstream of transcriptional start sites. Is able to unwind and bend DNA. Required for maintenance of normal levels of mitochondrial DNA. May play a role in organizing and compacting mitochondrial DNA. target DNA. Interacts with TFB1M and TFB2M.
配列類似性	Contains 2 HMG box DNA-binding domains.
細胞内局在	Mitochondrion.

画像



All lanes : Anti-mtTFA antibody [18G102B2E11] - Mitochondrial Marker (ab119684) at 1 µg/ml

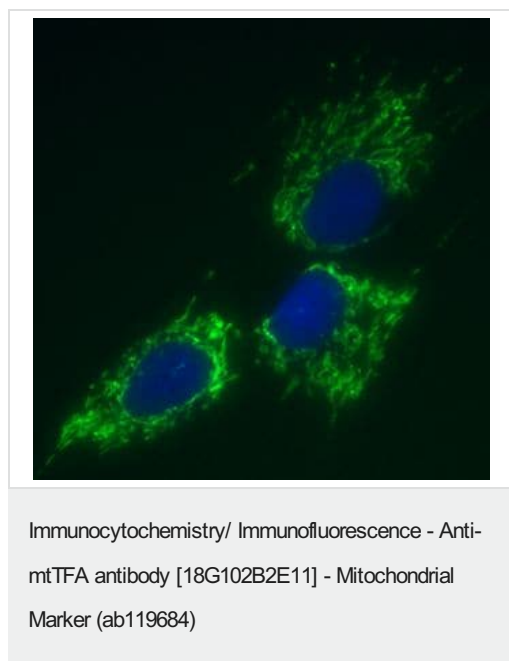
Lane 1 : recombinant mtTFA (**ab103784**) at 0.025 µg

Lane 2 : HeLa whole cell lysate at 30 µg

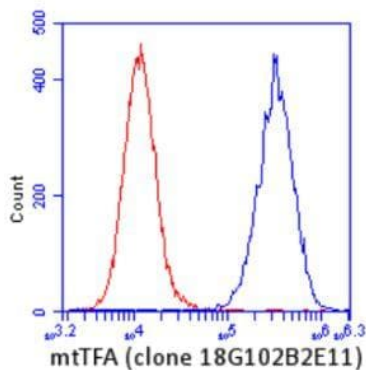
Secondary

All lanes : HRP-conjugated Goat polyclonal to mouse IgG at 1/5000 dilution

Predicted band size: 29 kDa

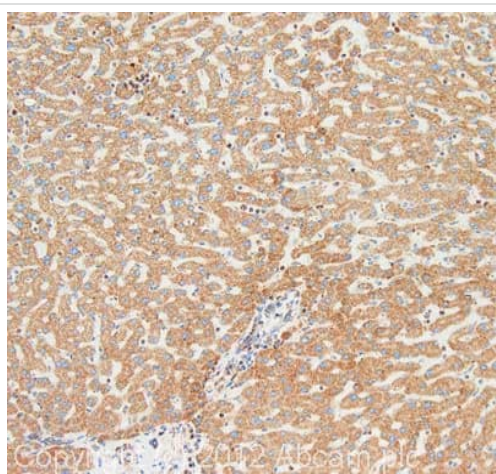


Immunocytochemistry image of ab119684 stained human HDFn cells. The cells were paraformaldehyde fixed (4%, 20 min) and Triton X-100 permeabilized (0.1%, 15min). The cells were incubated with the antibody (18G102B2E11, 1µg/ml) for 2h at room temperature. The secondary antibody was (green) 488 goat anti-mouse IgG (H+L) used at a 1/1000 dilution for 1h. 10% Goat serum was used as the blocking agent for all blocking steps. DAPI was used to stain the cell nuclei (blue). mtTFA localizes to the mitochondria.



Flow Cytometry - Anti-mtTFA antibody
[18G102B2E11] - Mitochondrial Marker (ab119684)

HeLa cells were stained with 2 µg/mL mtTFA antibody (ab119684) (blue) or an equal amount of an isotype control antibody (red) and analyzed by flow cytometry.



Immunohistochemistry (Formalin/PFA-fixed paraffin-embedded sections) - Anti-mtTFA antibody
[18G102B2E11] - Mitochondrial Marker (ab119684)

IHC image of mtTFA staining in human liver HCC formalin fixed paraffin embedded tissue section, performed on a Leica Bond™ system using the standard protocol F. The section was pre-treated using heat mediated antigen retrieval with sodium citrate buffer (pH6, epitope retrieval solution 1) for 20 mins. The section was then incubated with ab119684, 5µg/ml, for 15 mins at room temperature and detected using an HRP conjugated compact polymer system. DAB was used as the chromogen. The section was then counterstained with haematoxylin and mounted with DPX.

For other IHC staining systems (automated and non-automated) customers should optimize variable parameters such as antigen retrieval conditions, primary antibody concentration and antibody incubation times.

Please note: All products are "FOR RESEARCH USE ONLY. NOT FOR USE IN DIAGNOSTIC PROCEDURES"

Our Abpromise to you: Quality guaranteed and expert technical support

- Replacement or refund for products not performing as stated on the datasheet
- Valid for 12 months from date of delivery

- Response to your inquiry within 24 hours
- We provide support in Chinese, English, French, German, Japanese and Spanish
- Extensive multi-media technical resources to help you
- We investigate all quality concerns to ensure our products perform to the highest standards

If the product does not perform as described on this datasheet, we will offer a refund or replacement. For full details of the Abpromise, please visit <https://www.abcam.co.jp/abpromise> or contact our technical team.

Terms and conditions

- Guarantee only valid for products bought direct from Abcam or one of our authorized distributors