

Anti-MTIF2 antibody ab121243

★★★★★ **1 Abreviews** 画像数 3

製品の概要

| | |
|--------------|---|
| 製品名 | Anti-MTIF2 antibody |
| 製品の詳細 | Rabbit polyclonal to MTIF2 |
| 由来種 | Rabbit |
| アプリケーション | 適用あり: IHC-P, ICC/IF, WB |
| 種交差性 | 交差種: Human |
| 免疫原 | Recombinant fragment corresponding to Human MTIF2 aa 497-646. |
| ポジティブ・コントロール | Human cell line A431, Human plasma lysate, Human nasopharynx tissue. |
| 特記事項 | <p>The Life Science industry has been in the grips of a reproducibility crisis for a number of years. Abcam is leading the way in addressing this with our range of recombinant monoclonal antibodies and knockout edited cell lines for gold-standard validation. Please check that this product meets your needs before purchasing.</p> <p>If you have any questions, special requirements or concerns, please send us an inquiry and/or contact our Support team ahead of purchase. Recommended alternatives for this product can be found below, along with publications, customer reviews and Q&As</p> |

製品の特性

| | |
|--------|---|
| 製品の状態 | Liquid |
| 保存方法 | Shipped at 4°C. Upon delivery aliquot and store at -20°C. Avoid freeze / thaw cycles. |
| バッファー | pH: 7.20 Preservative: 0.02% Sodium azide Constituents: 59% PBS, 40% Glycerol (glycerin, glycerine) |
| 精製度 | Immunogen affinity purified |
| ポリ/モノ | ポリクローナル |
| アイソタイプ | IgG |

アプリケーション

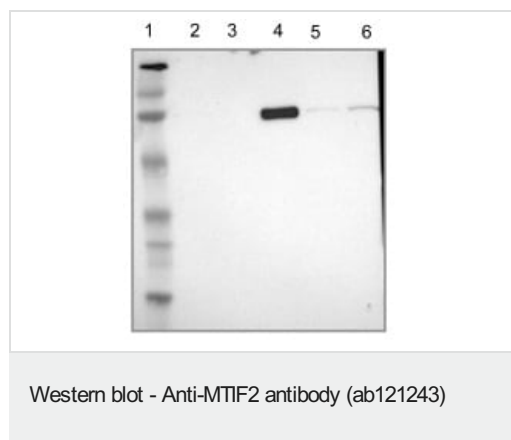
The Abpromise guarantee **Abpromise保証は、** 次のテスト済みアプリケーションにおけるab121243の使用に適用されます
アプリケーションノートには、推奨の開始希釈率がありますが、適切な希釈率につきましてはご検討ください。

| アプリケーション | Abreviews | 特記事項 |
|----------|-----------|---|
| IHC-P | | 1/20 - 1/50. Perform heat mediated antigen retrieval with citrate buffer pH 6 before commencing with IHC staining protocol. Use buffer at pH 6 for antigen retrieval. |
| ICC/IF | | Use a concentration of 0.25 - 2 µg/ml. |
| WB | ★★★★★ (1) | Use a concentration of 0.04 - 0.4 µg/ml. |

ターゲット情報

| | |
|-------|--|
| 機能 | One of the essential components for the initiation of protein synthesis. Protects formylmethionyl-tRNA from spontaneous hydrolysis and promotes its binding to the 30S ribosomal subunits. Also involved in the hydrolysis of GTP during the formation of the 70S ribosomal complex. |
| 組織特異性 | Expressed in all tissues examined. Highest level in skeletal muscle. |
| 配列類似性 | Belongs to the IF-2 family. |
| 細胞内局在 | Mitochondrion. |

画像



All lanes : Anti-MTIF2 antibody (ab121243) at 1/250 dilution

Lane 1 : Marker [kDa] 220, 112, 84, 47, 32, 26, 16.8

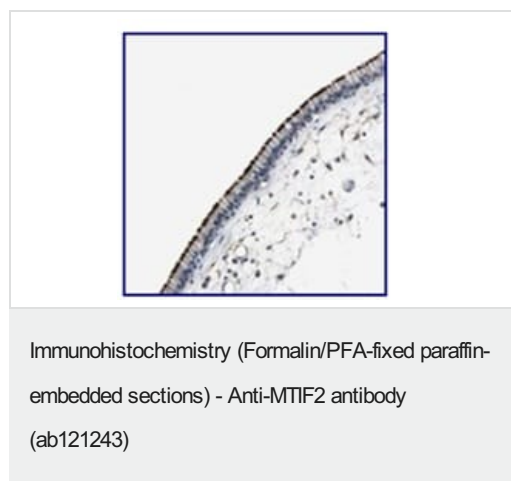
Lane 2 : RT-4 cell lysate

Lane 3 : U-251 MG cell lysate

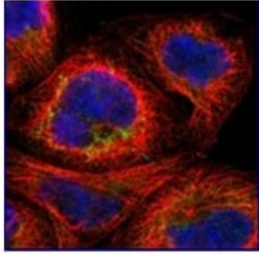
Lane 4 : Human Plasma lysate

Lane 5 : Human liver lysate

Lane 6 : Human tonsil lysate



Immunohistochemical staining of paraffin embedded Human nasopharynx tissue, using 1/25 ab121243, shows strong membranous positivity in respiratory epithelial cells.



Immunofluorescent staining, using 4 µg/ml ab121243, in Human cell line A431 shows positivity in mitochondria. Antibody staining is shown in green.

Immunocytochemistry/ Immunofluorescence - Anti-MTIF2 antibody (ab121243)

Please note: All products are "FOR RESEARCH USE ONLY. NOT FOR USE IN DIAGNOSTIC PROCEDURES"

Our Abpromise to you: Quality guaranteed and expert technical support

- Replacement or refund for products not performing as stated on the datasheet
- Valid for 12 months from date of delivery
- Response to your inquiry within 24 hours
- We provide support in Chinese, English, French, German, Japanese and Spanish
- Extensive multi-media technical resources to help you
- We investigate all quality concerns to ensure our products perform to the highest standards

If the product does not perform as described on this datasheet, we will offer a refund or replacement. For full details of the Abpromise, please visit <https://www.abcam.co.jp/abpromise> or contact our technical team.

Terms and conditions

- Guarantee only valid for products bought direct from Abcam or one of our authorized distributors