

Anti-MTHFD1 antibody ab103698

4 References [画像数 3](#)

製品の概要

製品名	Anti-MTHFD1 antibody
製品の詳細	Rabbit polyclonal to MTHFD1
由来種	Rabbit
アプリケーション	適用あり: WB
種交差性	交差種: Mouse, Human
免疫原	Recombinant full length protein within Human MTHFD1 aa 1-950. The exact immunogen sequence used to generate this antibody is proprietary information. If additional detail on the immunogen is needed to determine the suitability of the antibody for your needs, please contact our Scientific Support team to discuss your requirements.
ポジティブ・コントロール	Human liver tissue lysate, Mouse liver tissue lysate.
特記事項	<p>The Life Science industry has been in the grips of a reproducibility crisis for a number of years. Abcam is leading the way in addressing this with our range of recombinant monoclonal antibodies and knockout edited cell lines for gold-standard validation. Please check that this product meets your needs before purchasing.</p> <p>If you have any questions, special requirements or concerns, please send us an inquiry and/or contact our Support team ahead of purchase. Recommended alternatives for this product can be found below, along with publications, customer reviews and Q&As</p>

製品の特性

製品の状態	Liquid
保存方法	Shipped at 4°C. Upon delivery aliquot and store at -20°C or -80°C. Avoid repeated freeze / thaw cycles.
バッファー	pH: 7.40 Constituent: 100% PBS
精製度	Protein A purified
ポリ/モノ	ポリクローナル
アイソタイプ	IgG

アプリケーション

The Abpromise guarantee

Abpromise保証は、次のテスト済みアプリケーションにおけるab103698の使用に適用されます

アプリケーションノートには、推奨の開始希釈率がありますが、適切な希釈率につきましてはご検討ください。

アプリケーション	Abreviews	特記事項
WB		Use a concentration of 1 - 5 µg/ml. Predicted molecular weight: 102 kDa.

ターゲット情報

組織特異性

Ubiquitous.

パスウェイ

One-carbon metabolism; tetrahydrofolate interconversion.

関連疾患

Defects in MTHFD1 may be a cause of susceptibility to folate-sensitive neural tube defects (folate-sensitive NTD) [MIM:601634]. The most common NTDs are open spina bifida (myelomeningocele) and anencephaly. Genetic defects in MTHFD1 may affect the risk of spina bifida via the maternal rather than the embryonic genotype.
Genetic variation in MTHFD1 could be associated with susceptibility to colorectal cancer (CRC) [MIM:114500].

配列類似性

In the N-terminal section; belongs to the tetrahydrofolate dehydrogenase/cyclohydrolase family.
In the C-terminal section; belongs to the formate--tetrahydrofolate ligase family.

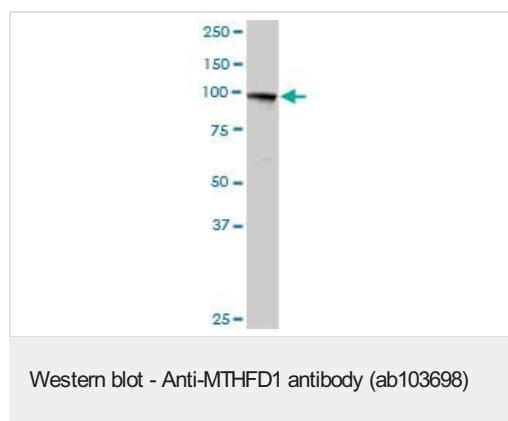
ドメイン

This trifunctional enzyme consists of two major domains: an N-terminal part containing the methylene-THF dehydrogenase and cyclohydrolase activities and a larger C-terminal part containing formyl-THF synthetase activity.

細胞内局在

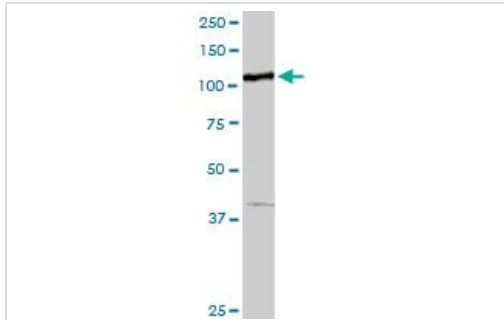
Cytoplasm.

画像



Anti-MTHFD1 antibody (ab103698) at 5 µg/ml + Human liver tissue lysate at 50 µg

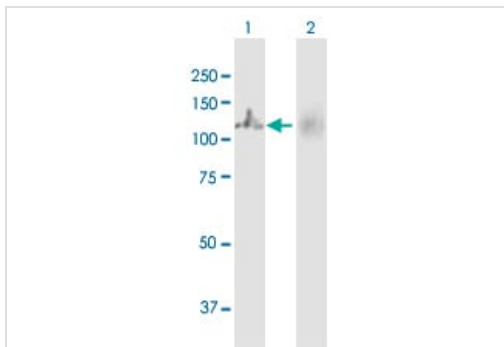
Predicted band size: 102 kDa



Western blot - Anti-MTHFD1 antibody (ab103698)

Anti-MTHFD1 antibody (ab103698) at 5 µg/ml + Mouse liver tissue lysate at 50 µg

Predicted band size: 102 kDa



Western blot - Anti-MTHFD1 antibody (ab103698)

All lanes : Anti-MTHFD1 antibody (ab103698) at 5 µg/ml

Lane 1 : MTHFD1 transfected 293T cell lysate

Lane 2 : Non-transfected 293T cell lysate

Predicted band size: 102 kDa

Please note: All products are "FOR RESEARCH USE ONLY. NOT FOR USE IN DIAGNOSTIC PROCEDURES"

Our Abpromise to you: Quality guaranteed and expert technical support

- Replacement or refund for products not performing as stated on the datasheet
- Valid for 12 months from date of delivery
- Response to your inquiry within 24 hours
- We provide support in Chinese, English, French, German, Japanese and Spanish
- Extensive multi-media technical resources to help you
- We investigate all quality concerns to ensure our products perform to the highest standards

If the product does not perform as described on this datasheet, we will offer a refund or replacement. For full details of the Abpromise, please visit <https://www.abcam.co.jp/abpromise> or contact our technical team.

Terms and conditions

- Guarantee only valid for products bought direct from Abcam or one of our authorized distributors