

Anti-MTCO2 antibody [EPR3313] ab109739

リコンビナント RabMAb

★★★★★ [1 Abreviews](#) [1 References](#) [画像数 4](#)

製品の概要

製品名	Anti-MTCO2 antibody [EPR3313]
製品の詳細	Rabbit monoclonal [EPR3313] to MTCO2
由来種	Rabbit
アプリケーション	適用あり: WB, IHC-P 適用なし: Flow Cyt or ICC/IF
種交差性	交差種: Human
免疫原	Synthetic peptide. This information is proprietary to Abcam and/or its suppliers.
ポジティブ・コントロール	HeLa, K562, MCF7, and THP1 cell lysates; Human kidney and liver tissues.
特記事項	<p>This product is a recombinant monoclonal antibody, which offers several advantages including:</p> <ul style="list-style-type: none">- High batch-to-batch consistency and reproducibility- Improved sensitivity and specificity- Long-term security of supply- Animal-free production <p>For more information see here.</p> <p>Our RabMAb[®] technology is a patented hybridoma-based technology for making rabbit monoclonal antibodies. For details on our patents, please refer to RabMAb[®] patents.</p> <p>Mouse, Rat: We have preliminary internal testing data to indicate this antibody may not react with these species. Please contact us for more information.</p>

製品の特性

製品の状態	Liquid
保存方法	Shipped at 4°C. Store at -20°C. Stable for 12 months at -20°C.
バッファー	pH: 7.20 Preservative: 0.05% Sodium azide Constituents: 40% Glycerol (glycerin, glycerine), 0.01% BSA, 9.85% Tris glycine
精製度	Protein A purified
ポリ/モノ	モノクローナル
クローン名	EPR3313

アプリケーション

The Abpromise guarantee Abpromise保証は、次のテスト済みアプリケーションにおけるab109739の使用に適用されず
アプリケーションノートには、推奨の開始希釈率がありますが、適切な希釈率につきましてはご検討ください。

アプリケーション	Abreviews	特記事項
WB	★★★★★ (1)	1/1000 - 1/10000. Predicted molecular weight: 26 kDa.
IHC-P		1/100 - 1/250. Perform heat mediated antigen retrieval via the pressure cooker method before commencing with IHC staining protocol. Antigen retrieval recommended; heat up to 98 degrees C, below boiling, and then let cool for 10-20 min.

追加情報

Is unsuitable for Flow Cyt or ICC/IF.

ターゲット情報

機能

Cytochrome c oxidase is the component of the respiratory chain that catalyzes the reduction of oxygen to water. Subunits 1-3 form the functional core of the enzyme complex. Subunit 2 transfers the electrons from cytochrome c via its binuclear copper A center to the bimetallic center of the catalytic subunit 1.

関連疾患

Defects in MT-CO2 are a cause of mitochondrial complex IV deficiency (MT-C4D) [MIM:220110]; also known as cytochrome c oxidase deficiency. A disorder of the mitochondrial respiratory chain with heterogeneous clinical manifestations, ranging from isolated myopathy to severe multisystem disease affecting several tissues and organs. Features include hypertrophic cardiomyopathy, hepatomegaly and liver dysfunction, hypotonia, muscle weakness, exercise intolerance, developmental delay, delayed motor development and mental retardation. A subset of patients manifest Leigh syndrome.

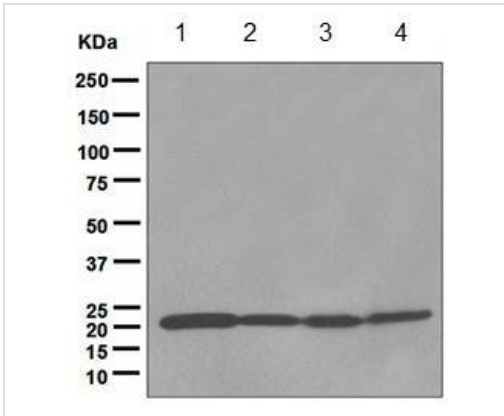
配列類似性

Belongs to the cytochrome c oxidase subunit 2 family.

細胞内局在

Mitochondrion inner membrane.

画像



Western blot - Anti-MTCO2 antibody [EPR3313] (ab109739)

All lanes : Anti-MTCO2 antibody [EPR3313] (ab109739) at 1/1000 dilution

Lane 1 : HeLa cell lysate

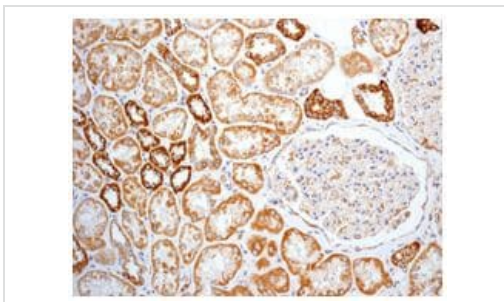
Lane 2 : K562 cell lysate

Lane 3 : MCF7 cell lysate

Lane 4 : THP1 cell lysate

Lysates/proteins at 10 µg per lane.

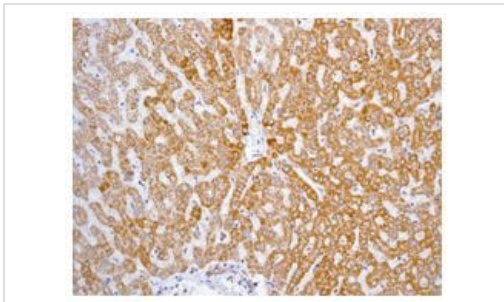
Predicted band size: 26 kDa



Immunohistochemistry (Formalin/PFA-fixed paraffin-embedded sections) - Anti-MTCO2 antibody [EPR3313] (ab109739)

ab109739 at 1/100 dilution staining Cytochrome C oxidase subunit II in paraffin-embedded Human kidney tissue by Immunohistochemistry.

Perform heat mediated antigen retrieval via the pressure cooker method before commencing with IHC staining protocol.



Immunohistochemistry (Formalin/PFA-fixed paraffin-embedded sections) - Anti-MTCO2 antibody [EPR3313] (ab109739)

ab109739 at 1/100 dilution staining Cytochrome C oxidase subunit II in paraffin-embedded Human liver tissue by Immunohistochemistry.

Perform heat mediated antigen retrieval via the pressure cooker method before commencing with IHC staining protocol.

Why choose a recombinant antibody?

Research with confidence
Consistent and reproducible results

Long-term and scalable supply
Recombinant technology

Success from the first experiment
Confirmed specificity

Ethical standards compliant
Animal-free production

Anti-MTCO2 antibody [EPR3313] (ab109739)

Please note: All products are "FOR RESEARCH USE ONLY. NOT FOR USE IN DIAGNOSTIC PROCEDURES"

Our Abpromise to you: Quality guaranteed and expert technical support

- Replacement or refund for products not performing as stated on the datasheet
- Valid for 12 months from date of delivery
- Response to your inquiry within 24 hours
- We provide support in Chinese, English, French, German, Japanese and Spanish
- Extensive multi-media technical resources to help you
- We investigate all quality concerns to ensure our products perform to the highest standards

If the product does not perform as described on this datasheet, we will offer a refund or replacement. For full details of the Abpromise, please visit <https://www.abcam.co.jp/abpromise> or contact our technical team.

Terms and conditions

- Guarantee only valid for products bought direct from Abcam or one of our authorized distributors