

### Anti-MTCO2 antibody [12C4F12] ab110258

★★★★★ **18 Abreviews**   **219 References**   画像数 3

#### 製品の概要

製品名	Anti-MTCO2 antibody [12C4F12]
製品の詳細	Mouse monoclonal [12C4F12] to MTCO2
由来種	Mouse
アプリケーション	<b>適用あり:</b> WB, ICC/IF, Flow Cyt
種交差性	<b>交差種:</b> Human
免疫原	Full length native protein (purified). This information is considered to be commercially sensitive.
ポジティブ・コントロール	WB: Mitochondrial lysate from human heart tissue. ICC/IF: Cultured human embryonic lung derived fibroblasts. Flow Cyt: HeLa cells.
特記事項	<p>This antibody clone is manufactured by Abcam. If you require a custom buffer formulation or conjugation for your experiments, please contact <a href="mailto:orders@abcam.com">orders@abcam.com</a>.</p> <p>The Life Science industry has been in the grips of a reproducibility crisis for a number of years. Abcam is leading the way in addressing this with our range of recombinant monoclonal antibodies and knockout edited cell lines for gold-standard validation. Please check that this product meets your needs before purchasing.</p> <p>If you have any questions, special requirements or concerns, please send us an inquiry and/or contact our Support team ahead of purchase. Recommended alternatives for this product can be found below, along with publications, customer reviews and Q&amp;As</p> <p>Product was previously marketed under the MitoSciences sub-brand.</p>

#### 製品の特性

製品の状態	Liquid
保存方法	Shipped at 4°C. Store at +4°C.
バッファー	pH: 7.5 Preservative: 0.02% Sodium azide Constituent: HEPES buffered saline
精製度	IgG fraction
特記事項 (精製)	ab110258 was produced in vitro using hybridomas grown in serum-free medium, and then purified by biochemical fractionation. ab110258 was judged near homogeneity by SDS-PAGE.
ポリ/モノ	モノクローナル

クローン名	12C4F12
アイソタイプ	IgG2a
軽鎖の種類	kappa

## アプリケーション

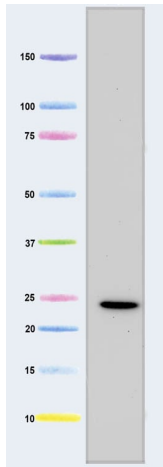
**The Abpromise guarantee**      **Abpromise保証は、** 次のテスト済みアプリケーションにおけるab110258の使用に適用されます  
アプリケーションノートには、推奨の開始希釈率がありますが、適切な希釈率につきましてはご検討ください。

アプリケーション	Abreviews	特記事項
WB	★★★★★ (11)	Use a concentration of 1 µg/ml. Predicted molecular weight: 26 kDa.
ICC/IF	★★★★★ (2)	Use a concentration of 5 - 10 µg/ml. (heat-induced antigen-retrieval improves signal)
Flow Cyt		Use a concentration of 1 µg/ml. <b>ab170191</b> - Mouse monoclonal IgG2a, is suitable for use as an isotype control with this antibody.

## ターゲット情報

機能	Cytochrome c oxidase is the component of the respiratory chain that catalyzes the reduction of oxygen to water. Subunits 1-3 form the functional core of the enzyme complex. Subunit 2 transfers the electrons from cytochrome c via its binuclear copper A center to the bimetallic center of the catalytic subunit 1.
関連疾患	Defects in MT-CO2 are a cause of mitochondrial complex IV deficiency (MT-C4D) [MIM:220110]; also known as cytochrome c oxidase deficiency. A disorder of the mitochondrial respiratory chain with heterogeneous clinical manifestations, ranging from isolated myopathy to severe multisystem disease affecting several tissues and organs. Features include hypertrophic cardiomyopathy, hepatomegaly and liver dysfunction, hypotonia, muscle weakness, exercise intolerance, developmental delay, delayed motor development and mental retardation. A subset of patients manifest Leigh syndrome.
配列類似性	Belongs to the cytochrome c oxidase subunit 2 family.
細胞内局在	Mitochondrion inner membrane.

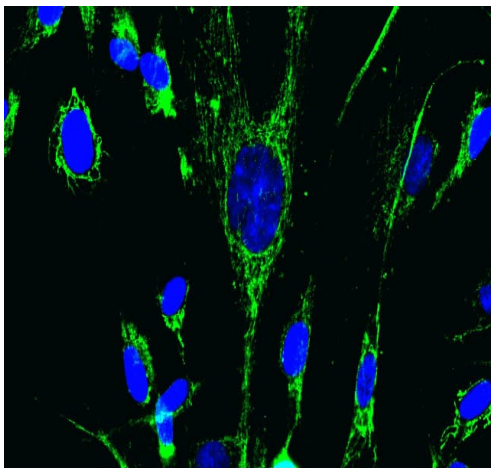
## 画像



Western blot - Anti-MTCO2 antibody [12C4F12] (ab110258)

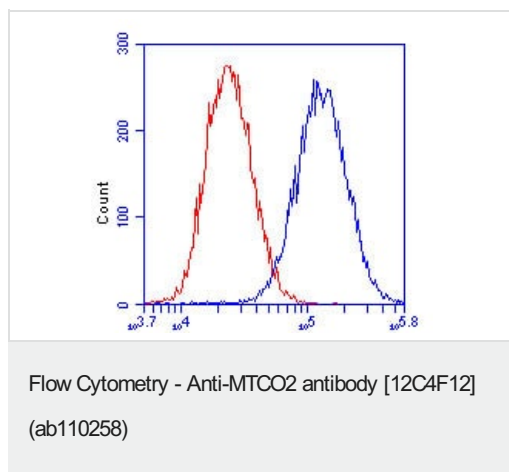
Anti-MTCO2 antibody [12C4F12] (ab110258) at 1 µg/ml +  
Mitochondrial lysate from human heart tissue at 5 µg

**Predicted band size:** 26 kDa



Immunocytochemistry/ Immunofluorescence - Anti-MTCO2 antibody [12C4F12] (ab110258)

Immunocytochemistry/Immunofluorescence analysis of human embryonic lung derived fibroblasts (MRC5) labelling Cytochrome C oxidase subunit II with ab110258 at 5 µg/ml. An Alexa Fluor® 488-conjugated goat anti-mouse IgG2a isotype specific secondary antibody was used at 2 µg/ml.



ab110258, at 1 µg/ml, staining Cytochrome C oxidase subunit II in HeLa cells by Flow Cytometry (Blue).

An isotype control antibody, at 1 µg/ml, staining in HeLa cells (Red).

**Please note:** All products are "FOR RESEARCH USE ONLY. NOT FOR USE IN DIAGNOSTIC PROCEDURES"

### Our Abpromise to you: Quality guaranteed and expert technical support

---

- Replacement or refund for products not performing as stated on the datasheet
- Valid for 12 months from date of delivery
- Response to your inquiry within 24 hours
- We provide support in Chinese, English, French, German, Japanese and Spanish
- Extensive multi-media technical resources to help you
- We investigate all quality concerns to ensure our products perform to the highest standards

If the product does not perform as described on this datasheet, we will offer a refund or replacement. For full details of the Abpromise, please visit <https://www.abcam.co.jp/abpromise> or contact our technical team.

### Terms and conditions

---

- Guarantee only valid for products bought direct from Abcam or one of our authorized distributors