

Anti-MT2-MMP antibody ab15475

3 References [画像数 2](#)

製品の概要

製品名	Anti-MT2-MMP antibody
製品の詳細	Rabbit polyclonal to MT2-MMP
由来種	Rabbit
アプリケーション	適用あり: IHC-P, ICC/IF
種交差性	交差種: Human 交差が予測される動物種: Mouse 
免疫原	Synthetic peptide. This information is proprietary to Abcam and/or its suppliers.
ポジティブ・コントロール	IHC-P: Human placenta tissue. ICC/IF: Jeg3 cells.
特記事項	<p>This product is FOR RESEARCH USE ONLY. For commercial use, please contact partnerships@abcam.com.</p> <p>The Life Science industry has been in the grips of a reproducibility crisis for a number of years. Abcam is leading the way in addressing this with our range of recombinant monoclonal antibodies and knockout edited cell lines for gold-standard validation. Please check that this product meets your needs before purchasing.</p> <p>If you have any questions, special requirements or concerns, please send us an inquiry and/or contact our Support team ahead of purchase. Recommended alternatives for this product can be found below, along with publications, customer reviews and Q&As</p>

製品の特性

製品の状態	Liquid
保存方法	Shipped at 4°C. Upon delivery aliquot and store at -20°C. Avoid freeze / thaw cycles.
バッファー	<p>pH: 7.60</p> <p>Preservative: 0.1% Sodium azide</p> <p>Constituents: PBS, 1% BSA</p>
精製度	Immunogen affinity purified
ポリ/モノ	ポリクローナル
アイソタイプ	IgG

アプリケーション

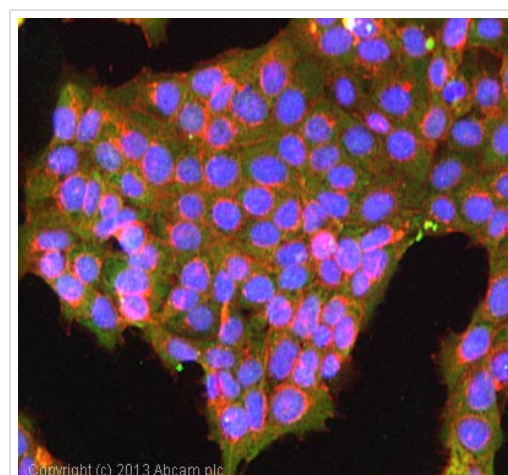
The Abpromise guarantee Abpromise保証は、次のテスト済みアプリケーションにおけるab15475の使用に適用されます
アプリケーションノートには、推奨の開始希釈率がありますが、適切な希釈率につきましてはご検討ください。

アプリケーション	Abreviews	特記事項
IHC-P		1/50. 1/50 for 10 min at RT. No special pretreatment is required for the immunohistochemical staining of formalin/paraffin tissues.
ICC/IF		Use a concentration of 5 µg/ml.

ターゲット情報

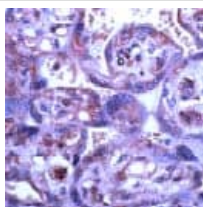
機能	Endopeptidase that degrades various components of the extracellular matrix. May activate progelatinase A.
組織特異性	Appeared to be synthesized preferentially in liver, placenta, testis, colon and intestine. Substantial amounts are also detected in pancreas, kidney, lung, heart and skeletal muscle.
配列類似性	Belongs to the peptidase M10A family. Contains 4 hemopexin-like domains.
ドメイン	The conserved cysteine present in the cysteine-switch motif binds the catalytic zinc ion, thus inhibiting the enzyme. The dissociation of the cysteine from the zinc ion upon the activation-peptide release activates the enzyme.
翻訳後修飾	The precursor is cleaved by a furin endopeptidase.
細胞内局在	Membrane.

画像



ICC/IF image of ab15475 stained Jeg3 cells. The cells were 100% methanol fixed (5 min) and then incubated in 1%BSA / 10% normal goat serum / 0.3M glycine in 0.1% PBS-Tween for 1h to permeabilise the cells and block non-specific protein-protein interactions. The cells were then incubated with the antibody (ab15475, 5µg/ml) overnight at +4°C. The secondary antibody (green) was **ab96899**, Dylight® 488 goat anti-rabbit IgG (H+L) used at a 1/250 dilution for 1h. Alexa Fluor® 594 WGA was used to label plasma membranes (red) at a 1/200 dilution for 1h. DAPI was used to stain the cell nuclei (blue) at a concentration of 1.43µM

Immunocytochemistry/ Immunofluorescence - Anti-MT2-MMP antibody (ab15475)



ab15475 staining MT2-MMP in human placenta by Immunohistochemistry (FFPE-sections).

Immunohistochemistry (Formalin/PFA-fixed paraffin-embedded sections) - Anti-MT2-MMP antibody (ab15475)

Please note: All products are "FOR RESEARCH USE ONLY. NOT FOR USE IN DIAGNOSTIC PROCEDURES"

Our Abpromise to you: Quality guaranteed and expert technical support

- Replacement or refund for products not performing as stated on the datasheet
- Valid for 12 months from date of delivery
- Response to your inquiry within 24 hours
- We provide support in Chinese, English, French, German, Japanese and Spanish
- Extensive multi-media technical resources to help you
- We investigate all quality concerns to ensure our products perform to the highest standards

If the product does not perform as described on this datasheet, we will offer a refund or replacement. For full details of the Abpromise, please visit <https://www.abcam.co.jp/abpromise> or contact our technical team.

Terms and conditions

- Guarantee only valid for products bought direct from Abcam or one of our authorized distributors