

### Anti-MSL1 antibody ab121718

★★★★★ [1 Abreviews](#) [画像数 2](#)

#### 製品の概要

製品名	Anti-MSL1 antibody
製品の詳細	Rabbit polyclonal to MSL1
由来種	Rabbit
アプリケーション	<b>適用あり:</b> IHC-P, ICC/IF
種交差性	<b>交差種:</b> Human
免疫原	antigen sequence corresponding to amino acids 236-330 (QQQQLQAKEK EIEELKSERD TLLARIERME RRMQLVKKDN EKERHKLFQG YETEEREETE LSEKICLECQ PELSETSQL PPKPFSCGRS GKGHK) of Human MSL1v1. <a href="#">Run BLAST with ExPASy</a> <a href="#">Run BLAST with NCBI</a>
ポジティブ・コントロール	Human prostate tissue; A431 cells.
特記事項	<p>The Life Science industry has been in the grips of a reproducibility crisis for a number of years. Abcam is leading the way in addressing this with our range of recombinant monoclonal antibodies and knockout edited cell lines for gold-standard validation. Please check that this product meets your needs before purchasing.</p> <p>If you have any questions, special requirements or concerns, please send us an inquiry and/or contact our Support team ahead of purchase. Recommended alternatives for this product can be found below, along with publications, customer reviews and Q&amp;As</p>

#### 製品の特性

製品の状態	Liquid
保存方法	Shipped at 4°C. Upon delivery aliquot and store at -20°C. Avoid freeze / thaw cycles.
バッファー	pH: 7.20 Preservative: 0.02% Sodium azide Constituents: 40% Glycerol (glycerin, glycerine), 59% PBS
精製度	Immunogen affinity purified
ポリ/モノ	ポリクローナル
アイソタイプ	IgG

#### アプリケーション

## The Abpromise guarantee

**Abpromise保証は、**次のテスト済みアプリケーションにおけるab121718の使用に適用されます

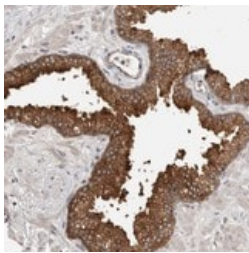
アプリケーションノートには、推奨の開始希釈率がありますが、適切な希釈率につきましてはご検討ください。

アプリケーション	Abreviews	特記事項
IHC-P		1/200 - 1/500. Perform heat mediated antigen retrieval with citrate buffer pH 6 before commencing with IHC staining protocol.
ICC/IF		Use a concentration of 0.25 - 2 µg/ml.

## ターゲット情報

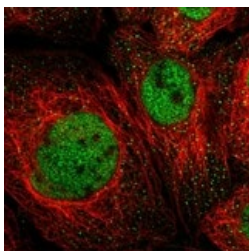
機能	Component of histone acetyltransferase complex responsible for the majority of histone H4 acetylation at 'Lys-16' which is implicated in the formation of higher-order chromatin structure.
配列類似性	Belongs to the msl-1 family.
細胞内局在	Nucleus.

## 画像



ab121718 at 1/400 dilution staining MSL1v1 in Paraffin-embedded Human Prostate tissue by Immunohistochemistry.

Immunohistochemistry (Formalin/PFA-fixed paraffin-embedded sections) - Anti-MSL1 antibody (ab121718)



ab121718 at 4 µg/ml staining MSL1v1 (green) in PFA/Triton X-100 fixed/permeabilized A431 cells by Immunofluorescence.

Immunocytochemistry/ Immunofluorescence - Anti-MSL1 antibody (ab121718)

**Please note:** All products are "FOR RESEARCH USE ONLY. NOT FOR USE IN DIAGNOSTIC PROCEDURES"

### **Our Abpromise to you: Quality guaranteed and expert technical support**

---

- Replacement or refund for products not performing as stated on the datasheet
- Valid for 12 months from date of delivery
- Response to your inquiry within 24 hours
  
- We provide support in Chinese, English, French, German, Japanese and Spanish
- Extensive multi-media technical resources to help you
- We investigate all quality concerns to ensure our products perform to the highest standards

If the product does not perform as described on this datasheet, we will offer a refund or replacement. For full details of the Abpromise, please visit <https://www.abcam.co.jp/abpromise> or contact our technical team.

### **Terms and conditions**

---

- Guarantee only valid for products bought direct from Abcam or one of our authorized distributors