

Anti-MRPL48 antibody [EPR16328] ab194826

リコンビナント RabMAb

4 References [画像数 8](#)

製品の概要

製品名	Anti-MRPL48 antibody [EPR16328]
製品の詳細	Rabbit monoclonal [EPR16328] to MRPL48
由来種	Rabbit
アプリケーション	適用あり: Flow Cyt (Intra), IHC-P, WB, ICC/IF, IP
種交差性	交差種: Mouse, Rat, Human
免疫原	Synthetic peptide. This information is proprietary to Abcam and/or its suppliers.
ポジティブ・コントロール	HepG2, HeLa, PC12, NIH 3T3, Jurkat, Human fetal heart lysate; mouse brain, mouse heart, rat brain and rat heart lysates; Human cervix carcinoma tissue; HepG2 cells.
特記事項	<p>This product is a recombinant monoclonal antibody, which offers several advantages including:</p> <ul style="list-style-type: none">- High batch-to-batch consistency and reproducibility- Improved sensitivity and specificity- Long-term security of supply- Animal-free production <p>For more information see here.</p> <p>Our RabMAb[®] technology is a patented hybridoma-based technology for making rabbit monoclonal antibodies. For details on our patents, please refer to RabMAb[®] patents.</p>

製品の特性

製品の状態	Liquid
保存方法	Shipped at 4°C. Store at +4°C short term (1-2 weeks). Upon delivery aliquot. Store at -20°C long term. Avoid freeze / thaw cycle.
バッファー	pH: 7.2 Preservative: 0.01% Sodium azide Constituents: 59% PBS, 40% Glycerol (glycerin, glycerine), 0.05% BSA
精製度	Protein A purified
ポリ/モノ	モノクローナル
クローン名	EPR16328
アイソタイプ	IgG

アプリケーション

The Abpromise guarantee **Abpromise保証は、次のテスト済みアプリケーションにおけるab194826の使用に適用されず**
アプリケーションノートには、推奨の開始希釈率がありますが、適切な希釈率につきましてはご検討ください。

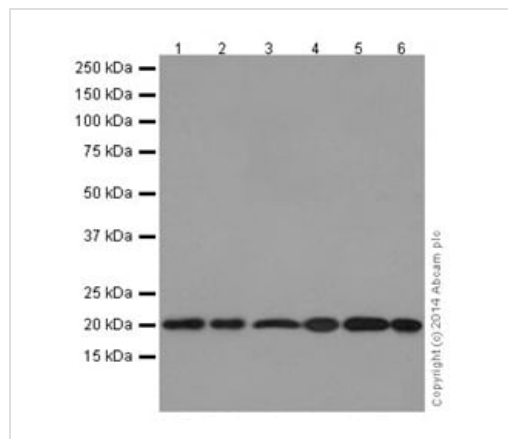
アプリケーション	Abreviews	特記事項
Flow Cyt (Intra)		1/60.
IHC-P		1/150. Perform heat mediated antigen retrieval with Tris/EDTA buffer pH 9.0 before commencing with IHC staining protocol.
WB		1/1000 - 1/10000. Detects a band of approximately 20 kDa (predicted molecular weight: 24 kDa).
ICC/IF		1/150.
IP		1/30.

ターゲット情報

細胞内局在

Mitochondrion.

画像



Western blot - Anti-MRPL48 antibody [EPR16328]
(ab194826)

All lanes : Anti-MRPL48 antibody [EPR16328] (ab194826) at
1/2000 dilution

Lane 1 : Mouse brain lysate

Lane 2 : Mouse heart lysate

Lane 3 : Rat brain lysate

Lane 4 : Rat heart lysate

Lane 5 : PC12 cell lysate

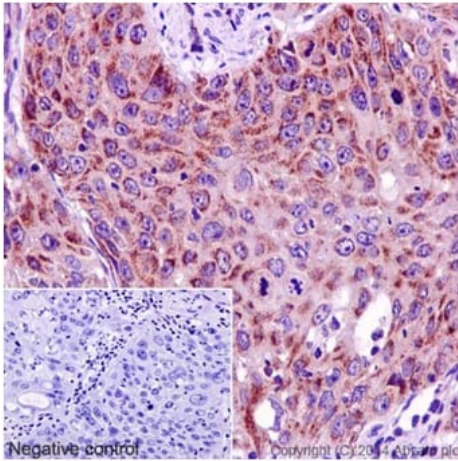
Lane 6 : NIH 3T3 cell lysate

Lysates/proteins at 10 µg per lane.

Secondary

All lanes : Goat Anti-Rabbit IgG, (H+L), Peroxidase conjugated at
1/1000 dilution

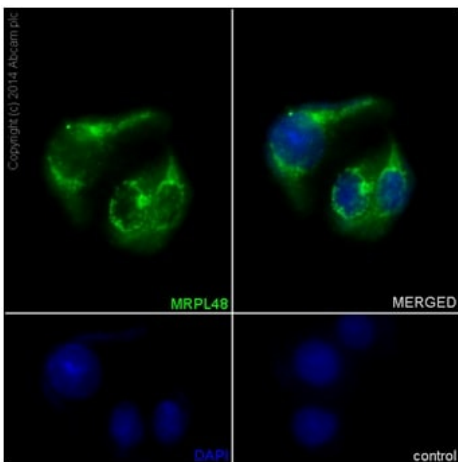
Predicted band size: 24 kDa



Immunohistochemistry (Formalin/PFA-fixed paraffin-embedded sections) - Anti-MRPL48 antibody [EPR16328] (ab194826)

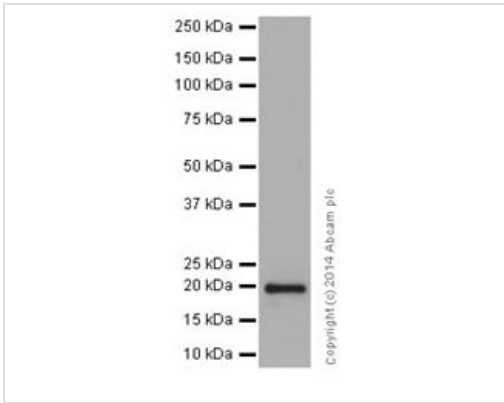
Immunohistochemical analysis of paraffin-embedded Human cervix carcinoma tissue labeling MRPL48 with ab194826 at 1/150 dilution. A Goat Anti-Rabbit IgG H&L (HRP) at 1/500 dilution was used as secondary ([ab97051](#)). Counterstain: Hematoxylin. Inset image: negative control obtained using PBS instead of ab194826. Cytoplasm staining on human cervix carcinoma tissue was observed.

Perform heat mediated antigen retrieval with Tris/EDTA buffer pH 9.0 before commencing with IHC staining protocol.



Immunocytochemistry/ Immunofluorescence - Anti-MRPL48 antibody [EPR16328] (ab194826)

Immunofluorescent analysis of A431 cells labeling MRPL48 with ab194826 at 1/50 dilution. A Goat anti rabbit IgG (Alexa Fluor488) at 1/400 dilution ([ab150077](#)) was used as secondary antibody. Cells were fixed with 4% paraformaldehyde and permeabilized with 0.1% triton X-100. Counterstain: DAPI. Cytoplasm staining on HepG2 cell line was observed.



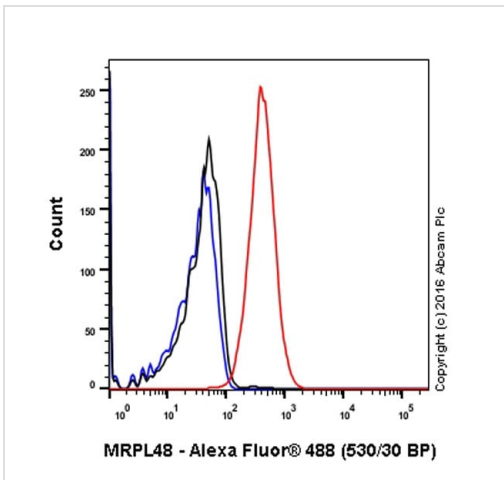
Western blot - Anti-MRPL48 antibody [EPR16328] (ab194826)

Anti-MRPL48 antibody [EPR16328] (ab194826) at 1/2000 dilution + Human fetal heart tissue lysate at 20 µg

Secondary

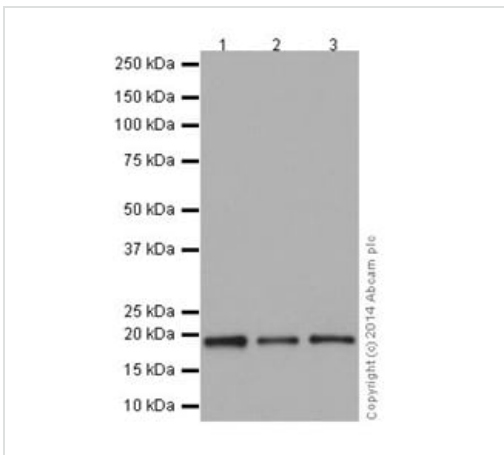
Goat Anti-Rabbit IgG, (H+L), Peroxidase conjugated at 1/1000 dilution

Predicted band size: 24 kDa



Flow Cytometry (Intracellular) - Anti-MRPL48 antibody [EPR16328] (ab194826)

Intracellular Flow Cytometry analysis of HeLa cells labelling MRPL48 (red) with purified ab194826 at dilution of 1/60. The secondary antibody used was Alexa Fluor® 488 goat-anti-rabbit IgG (1/2000). Cells were fixed with 4% paraformaldehyde and permeabilised with 90% methanol. Isotype control antibody was Rabbit monoclonal IgG (black). The blue line shows cells without incubation with primary antibody and secondary antibody.



Western blot - Anti-MRPL48 antibody [EPR16328] (ab194826)

All lanes : Anti-MRPL48 antibody [EPR16328] (ab194826) at 1/10000 dilution

Lane 1 : HepG2 cell lysate

Lane 2 : HeLa cell lysate

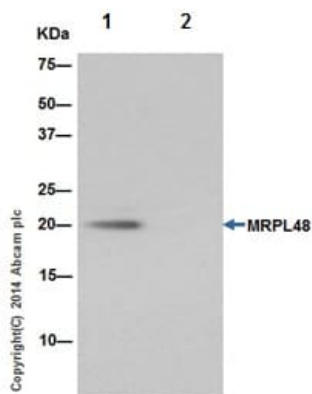
Lane 3 : Jurkat cell lysate

Lysates/proteins at 20 µg per lane.

Secondary

All lanes : Goat Anti-Rabbit IgG, (H+L), Peroxidase conjugated at 1/1000 dilution

Predicted band size: 24 kDa



Western blot analysis of immunoprecipitation pellet from HepG2 cell lysate immunoprecipitated using ab194826 at 1/30 dilution (lane 1) or PBS control (lane 2)

For Western blot: ab194826 was used at 1/1000 dilution (0.6µg/ml). Secondary: Anti-Rabbit IgG (HRP), specific to the non-reduced form of IgG at 1/1500 dilution.

Immunoprecipitation - Anti-MRPL48 antibody
[EPR16328] (ab194826)

Why choose a recombinant antibody?



Research with confidence
Consistent and reproducible results



Long-term and scalable supply
Recombinant technology



Success from the first experiment
Confirmed specificity



Ethical standards compliant
Animal-free production

Anti-MRPL48 antibody [EPR16328] (ab194826)

Please note: All products are "FOR RESEARCH USE ONLY. NOT FOR USE IN DIAGNOSTIC PROCEDURES"

Our Abpromise to you: Quality guaranteed and expert technical support

- Replacement or refund for products not performing as stated on the datasheet
- Valid for 12 months from date of delivery
- Response to your inquiry within 24 hours
- We provide support in Chinese, English, French, German, Japanese and Spanish
- Extensive multi-media technical resources to help you
- We investigate all quality concerns to ensure our products perform to the highest standards

If the product does not perform as described on this datasheet, we will offer a refund or replacement. For full details of the Abpromise, please visit <https://www.abcam.co.jp/abpromise> or contact our technical team.

Terms and conditions

- Guarantee only valid for products bought direct from Abcam or one of our authorized distributors