

Anti-MRPL41 antibody ab121821

1 References [画像数 3](#)

製品の概要

製品名	Anti-MRPL41 antibody
製品の詳細	Rabbit polyclonal to MRPL41
由来種	Rabbit
アプリケーション	適用あり: IHC-P, WB, ICC/IF
種交差性	交差種: Human
免疫原	antigen sequence: KPYVSYLAPE SEETPLTAAQ LFSEAVAPAI EKDFKDGTFD PDNLEKYGFE PTQEGKLFQL YPRNFLR, corresponding to amino acids 71-137 of Human MRPL41. Run BLAST with Expasy Run BLAST with NCBI
ポジティブ・コントロール	Human rectum tissue; RT-4 and U-251 MG cell lysates; U-251MG cells
特記事項	<p>The Life Science industry has been in the grips of a reproducibility crisis for a number of years. Abcam is leading the way in addressing this with our range of recombinant monoclonal antibodies and knockout edited cell lines for gold-standard validation. Please check that this product meets your needs before purchasing.</p> <p>If you have any questions, special requirements or concerns, please send us an inquiry and/or contact our Support team ahead of purchase. Recommended alternatives for this product can be found below, along with publications, customer reviews and Q&As</p>

製品の特性

製品の状態	Liquid
保存方法	Shipped at 4°C. Upon delivery aliquot and store at -20°C. Avoid freeze / thaw cycles.
バッファー	pH: 7.20 Preservative: 0.02% Sodium azide Constituents: 59% PBS, 40% Glycerol (glycerin, glycerine)
精製度	Immunogen affinity purified
ポリ/モノ	ポリクローナル
アイソタイプ	IgG

アプリケーション

The Abpromise guarantee

Abpromise保証は、次のテスト済みアプリケーションにおけるab121821の使用に適用されます

アプリケーションノートには、推奨の開始希釈率がありますが、適切な希釈率につきましてはご確認ください。

アプリケーション	Abreviews	特記事項
IHC-P		1/200 - 1/500. Perform heat mediated antigen retrieval with citrate buffer pH 6 before commencing with IHC staining protocol.
WB		Use a concentration of 0.04 - 0.4 µg/ml.
ICC/IF		Use a concentration of 0.25 - 2 µg/ml.

ターゲット情報

機能

Component of the mitochondrial ribosome large subunit. Also involved in apoptosis and cell cycle. Enhances p53/TP53 stability, thereby contributing to p53/TP53-induced apoptosis in response to growth-inhibitory condition. Enhances p53/TP53 translocation to the mitochondria. Has the ability to arrest the cell cycle at the G1 phase, possibly by stabilizing the CDKN1A and CDKN1B (p27Kip1) proteins.

組織特異性

Present in kidney, liver, thymus and testis, and at lower level in brain and spleen (at protein level).

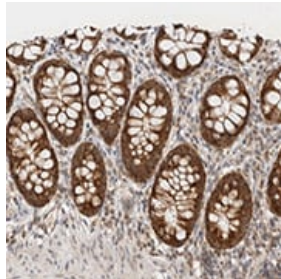
配列類似性

Belongs to the ribosomal protein L41 family.

細胞内局在

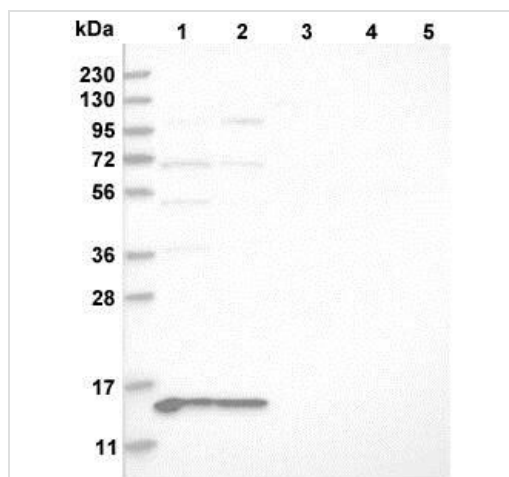
Mitochondrion.

画像



ab121821, at 1/300 dilution, staining MRPL41 in paraffin-embedded Human rectum tissue by Immunohistochemistry.

Immunohistochemistry (Formalin/PFA-fixed paraffin-embedded sections) - Anti-MRPL41 antibody (ab121821)



Western blot - Anti-MRPL41 antibody (ab121821)

All lanes : Anti-MRPL41 antibody (ab121821) at 1/250 dilution

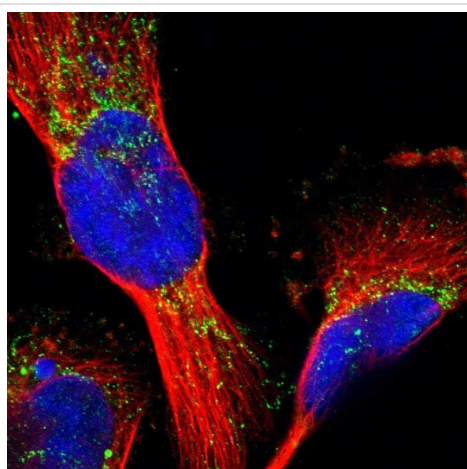
Lane 1 : RT-4 cell lysate

Lane 2 : U-251 MG cell lysate

Lane 3 : Human Plasma lysate

Lane 4 : Human Liver lysate

Lane 5 : Human Tonsil lysate



Immunocytochemistry/ Immunofluorescence - Anti-MRPL41 antibody (ab121821)

ab121821, at 4 μ g/ml, staining MRPL41 in U-251MG cells by Immunofluorescence. Antibody staining is shown in green.

Please note: All products are "FOR RESEARCH USE ONLY. NOT FOR USE IN DIAGNOSTIC PROCEDURES"

Our Abpromise to you: Quality guaranteed and expert technical support

- Replacement or refund for products not performing as stated on the datasheet
- Valid for 12 months from date of delivery
- Response to your inquiry within 24 hours

- We provide support in Chinese, English, French, German, Japanese and Spanish
- Extensive multi-media technical resources to help you
- We investigate all quality concerns to ensure our products perform to the highest standards

If the product does not perform as described on this datasheet, we will offer a refund or replacement. For full details of the Abpromise, please visit <https://www.abcam.co.jp/abpromise> or contact our technical team.

Terms and conditions

- Guarantee only valid for products bought direct from Abcam or one of our authorized distributors