

Anti-MRPL20 antibody [EPR12592] ab181058

リコンビナント **RabMAb**

画像数 2

製品の概要

製品名	Anti-MRPL20 antibody [EPR12592]
製品の詳細	Rabbit monoclonal [EPR12592] to MRPL20
由来種	Rabbit
アプリケーション	適用あり: WB
種交差性	交差種: Mouse, Rat, Human
免疫原	Recombinant fragment. This information is proprietary to Abcam and/or its suppliers.
ポジティブ・コントロール	HUVEC, HeLa, C6, RAW 264.7, PC12 and NIH 3T3 cell lysates.
特記事項	<p>This product is a recombinant monoclonal antibody, which offers several advantages including:</p> <ul style="list-style-type: none"> - High batch-to-batch consistency and reproducibility - Improved sensitivity and specificity - Long-term security of supply - Animal-free production <p>For more information see here.</p> <p>Our RabMAb[®] technology is a patented hybridoma-based technology for making rabbit monoclonal antibodies. For details on our patents, please refer to RabMAb[®] patents.</p>

製品の特性

製品の状態	Liquid
保存方法	Shipped at 4°C. Store at +4°C short term (1-2 weeks). Upon delivery aliquot. Store at -20°C long term. Avoid freeze / thaw cycle.
バッファー	<p>Preservative: 0.01% Sodium azide</p> <p>Constituents: 40% Glycerol (glycerin, glycerine), 59% PBS, 0.05% BSA</p>
精製度	Tissue culture supernatant
ポリ/モノ	モノクローナル
クローン名	EPR12592
アイソタイプ	IgG

The Abpromise guarantee Abpromise保証は、 次のテスト済みアプリケーションにおけるab181058の使用に適用されます
アプリケーションノートには、推奨の開始希釈率がありますが、適切な希釈率につきましてはご検討ください。

アプリケーション	Abreviews	特記事項
WB		1/1000 - 1/2000. Detects a band of approximately 17 kDa (predicted molecular weight: 17 kDa).

ターゲット情報

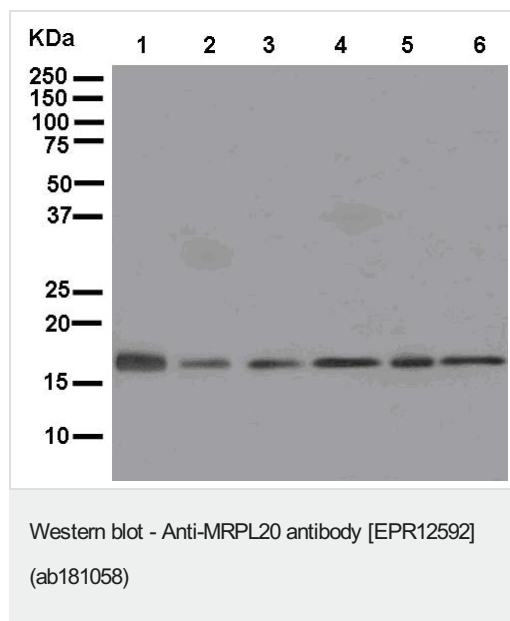
関連性

MRPL20 is one of more than 70 protein components of mitochondrial ribosomes that are encoded by the nuclear genome. MRPL20 is a subunit of the 39S mitochondrial ribosome. Mitochondrial ribosomes (mitoribosomes) consist of a small 28S subunit and a large 39S subunit. They have an estimated 75% protein to rRNA composition compared to prokaryotic ribosomes, where this ratio is reversed. Another difference between mammalian mitoribosomes and prokaryotic ribosomes is that the latter contain a 5S rRNA. Among different species, the proteins comprising the mitoribosome differ greatly in sequence, and sometimes in biochemical properties, which prevents easy recognition by sequence homology.

細胞内局在

Mitochondrial

画像



All lanes : Anti-MRPL20 antibody [EPR12592] (ab181058) at 1/1000 dilution

Lane 1 : HUVEC cell lysate

Lane 2 : HeLa cell lysate

Lane 3 : C6 cell lysate

Lane 4 : RAW 264.7 cell lysate

Lane 5 : PC12 cell lysate

Lane 6 : NIH 3T3 cell lysate

Lysates/proteins at 10 µg per lane.

Secondary

All lanes : Goat Anti-Rabbit IgG, (H+L) HRP at 1/1000 dilution

Predicted band size: 17 kDa

Why choose a recombinant antibody?



Research with confidence
Consistent and reproducible results



Long-term and scalable supply
Recombinant technology



Success from the first experiment
Confirmed specificity



Ethical standards compliant
Animal-free production

Anti-MRPL20 antibody [EPR12592] (ab181058)

Please note: All products are "FOR RESEARCH USE ONLY. NOT FOR USE IN DIAGNOSTIC PROCEDURES"

Our Abpromise to you: Quality guaranteed and expert technical support

- Replacement or refund for products not performing as stated on the datasheet
- Valid for 12 months from date of delivery
- Response to your inquiry within 24 hours
- We provide support in Chinese, English, French, German, Japanese and Spanish
- Extensive multi-media technical resources to help you
- We investigate all quality concerns to ensure our products perform to the highest standards

If the product does not perform as described on this datasheet, we will offer a refund or replacement. For full details of the Abpromise, please visit <https://www.abcam.co.jp/abpromise> or contact our technical team.

Terms and conditions

- Guarantee only valid for products bought direct from Abcam or one of our authorized distributors