

Anti-MRP4 antibody [M4I-10] ab15602

KO 評価済

[1 Abreviews](#) [36 References](#) [画像数 2](#)

製品の概要

製品名	Anti-MRP4 antibody [M4I-10]
製品の詳細	Rat monoclonal [M4I-10] to MRP4
由来種	Rat
アプリケーション	適用あり: IHC-P, WB
種交差性	交差種: Mouse, Human
免疫原	Fusion protein corresponding to Human MRP4 aa 350-450. Fusion protein containing the E. coli maltose binding protein and a fragment of the human MRP4 protein corresponding to amino acids 372-431.
ポジティブ・コントロール	Kidney tissue This antibody gave a positive result in IHC in the following FFPE tissue: Human lung adenocarcinoma.
特記事項	<p>The Life Science industry has been in the grips of a reproducibility crisis for a number of years. Abcam is leading the way in addressing this with our range of recombinant monoclonal antibodies and knockout edited cell lines for gold-standard validation. Please check that this product meets your needs before purchasing.</p> <p>If you have any questions, special requirements or concerns, please send us an inquiry and/or contact our Support team ahead of purchase. Recommended alternatives for this product can be found below, along with publications, customer reviews and Q&As</p>

製品の特性

製品の状態	Liquid
保存方法	Shipped at 4°C. Store at +4°C short term (1-2 weeks). Upon delivery aliquot. Store at -20°C. Avoid freeze / thaw cycle.
バッファー	<p>pH: 7.30</p> <p>Preservative: 0.02% Sodium azide</p> <p>Constituents: 0.1% BSA, PBS</p>
精製度	Tissue culture supernatant
ポリ/モノ	モノクローナル
クローン名	M4I-10

アプリケーション

The Abpromise guarantee

Abpromise保証は、次のテスト済みアプリケーションにおけるab15602の使用に適用されます

アプリケーションノートには、推奨の開始希釈率がありますが、適切な希釈率につきましてはご検討ください。

アプリケーション	Abreviews	特記事項
IHC-P		Use a concentration of 10 µg/ml. Perform heat mediated antigen retrieval with citrate buffer pH 6 before commencing with IHC staining protocol.
WB		1/2000. Predicted molecular weight: 159 kDa.

ターゲット情報

機能

May be an organic anion pump relevant to cellular detoxification.

組織特異性

Widely expressed, with particularly high levels in prostate, but is barely detectable in liver.

配列類似性

Belongs to the ABC transporter superfamily. ABCC family. Conjugate transporter (TC 3.A.1.208) subfamily.

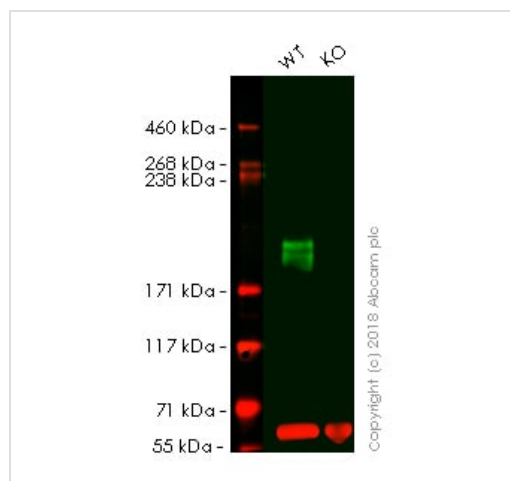
Contains 2 ABC transmembrane type-1 domains.

Contains 2 ABC transporter domains.

細胞内局在

Membrane.

画像



Western blot - Anti-MRP4 antibody [M4I-10] (ab15602)

All lanes : Anti-MRP4 antibody [M4I-10] (ab15602) at 20 µg/ml

Lane 1 : Wild-type HAP1 whole cell lysate

Lane 2 : ABCC4 (MRP4) knockout HAP1 whole cell lysate

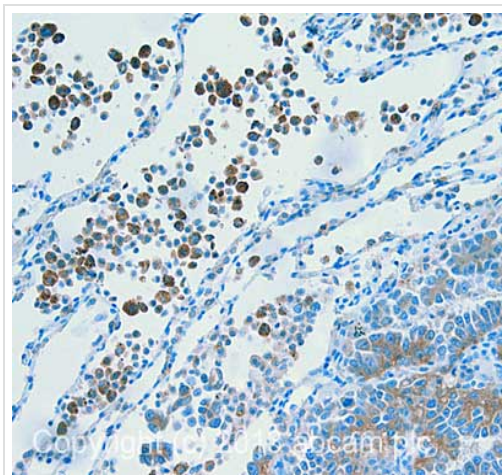
Lysates/proteins at 20 µg per lane.

Predicted band size: 159 kDa

Lanes 1 - 2: Merged signal (red and green). Green - ab15602 observed at 200-250 kDa. Red - loading control, **ab176560**, observed at 50 kDa.

ab15602 was shown to specifically react with MRP4 in wild-type HAP1 cells as signal was lost in ABCC4 (MRP4) knockout cells.

Wild-type and ABCC4 (MRP4) knockout samples were subjected to SDS-PAGE. Ab15602 and **ab176560** (Rabbit anti-alpha Tubulin loading control) were incubated overnight at 4°C at 20 µg/ml and 1/20000 dilution respectively. Blots were developed with Goat anti-Rat IgG H&L (IRDye® 800CW) (**ab253031**) and Goat anti-Rabbit IgG H&L (IRDye® 680RD) preabsorbed **ab216777** secondary antibodies at 1/20000 dilution for 1 hour at room temperature before imaging.



Immunohistochemistry (Formalin/PFA-fixed paraffin-embedded sections) - Anti-MRP4 antibody [M4I-10] (ab15602)

HC image of MRP4 staining in Human lung adenocarcinoma formalin fixed paraffin embedded tissue section, performed on a Leica Bond™ system using the standard protocol B. The section was pre-treated using heat mediated antigen retrieval with sodium citrate buffer (pH6, epitope retrieval solution 1) for 20 mins. The section was then incubated with ab15602, 10µg/ml, for 15 mins at room temperature. A Goat anti-Rat biotinylated secondary antibody (**ab253031**) was used to detect the primary, and visualized using an HRP conjugated ABC system. DAB was used as the chromogen. The section was then counterstained with haematoxylin and mounted with DPX.

For other IHC staining systems (automated and non-automated) customers should optimize variable parameters such as antigen retrieval conditions, primary antibody concentration and antibody incubation times.

Please note: All products are "FOR RESEARCH USE ONLY. NOT FOR USE IN DIAGNOSTIC PROCEDURES"

Our Abpromise to you: Quality guaranteed and expert technical support

- Replacement or refund for products not performing as stated on the datasheet
- Valid for 12 months from date of delivery
- Response to your inquiry within 24 hours
- We provide support in Chinese, English, French, German, Japanese and Spanish
- Extensive multi-media technical resources to help you
- We investigate all quality concerns to ensure our products perform to the highest standards

If the product does not perform as described on this datasheet, we will offer a refund or replacement. For full details of the Abpromise, please visit <https://www.abcam.co.jp/abpromise> or contact our technical team.

Terms and conditions

- Guarantee only valid for products bought direct from Abcam or one of our authorized distributors