

Anti-MRC2/ENDO180 antibody ab70132

★★★★☆ [4 Abreviews](#) [12 References](#) [画像数 4](#)

製品の概要

製品名	Anti-MRC2/ENDO180 antibody
製品の詳細	Rabbit polyclonal to MRC2/ENDO180
由来種	Rabbit
アプリケーション	適用あり: WB, IHC-P, ICC/IF
種交差性	交差種: Human
免疫原	Synthetic peptide. This information is proprietary to Abcam and/or its suppliers.
特記事項	<p>The Life Science industry has been in the grips of a reproducibility crisis for a number of years. Abcam is leading the way in addressing this with our range of recombinant monoclonal antibodies and knockout edited cell lines for gold-standard validation. Please check that this product meets your needs before purchasing.</p> <p>If you have any questions, special requirements or concerns, please send us an inquiry and/or contact our Support team ahead of purchase. Recommended alternatives for this product can be found below, along with publications, customer reviews and Q&As</p>

製品の特性

製品の状態	Liquid
保存方法	Shipped at 4°C. Upon delivery aliquot and store at -20°C. Avoid freeze / thaw cycles.
バッファー	<p>pH: 7.40</p> <p>Preservative: 0.02% Sodium azide</p> <p>Constituents: 0.87% Sodium chloride, 50% Glycerol, PBS</p>
精製度	Without Mg ²⁺ and Ca ²⁺
特記事項 (精製)	Immunogen affinity purified
	ab70132 was affinity purified from rabbit antiserum by affinity chromatography using epitope specific immunogen.
ポリ/モノ	ポリクローナル
アイソタイプ	IgG

アプリケーション

The Abpromise guarantee

Abpromise保証は、次のテスト済みアプリケーションにおけるab70132の使用に適用されます

アプリケーションノートには、推奨の開始希釈率がありますが、適切な希釈率につきましてはご検討ください。

アプリケーション	Abreviews	特記事項
WB	★★★★★ (1)	
IHC-P	★★★★★ (1)	
ICC/IF	★★★★★ (1)	

追加情報

ELISA: 1/20000.

Flow Cyt: 1/5 (Abreview).

ICC/IF: 1/500 - 1/1000.

IHC-P: 1/50 - 1/100.

WB: 1/500 - 1/1000. Detects a band of approximately 167 kDa (predicted molecular weight: 167 kDa).

Not yet tested in other applications.

Optimal dilutions/concentrations should be determined by the end user.

ターゲット情報

機能

May play a role as endocytotic lectin receptor displaying calcium-dependent lectin activity. Internalizes glycosylated ligands from the extracellular space for release in an endosomal compartment via clathrin-mediated endocytosis. May be involved in plasminogen activation system controlling the extracellular level of PLAUR/PLAU, and thus may regulate protease activity at the cell surface. May contribute to cellular uptake, remodeling and degradation of extracellular collagen matrices. May play a role during cancer progression as well as in other chronic tissue destructive diseases acting on collagen turnover. May participate in remodeling of extracellular matrix co-operating with the matrix metalloproteinases (MMPs).

組織特異性

Ubiquitous with low expression in brain, placenta, lung, kidney, pancreas, spleen, thymus and colon. Expressed in endothelial cells, fibroblasts and macrophages. Highly expressed in fetal lung and kidney.

配列類似性

Contains 8 C-type lectin domains.

Contains 1 fibronectin type-II domain.

Contains 1 ricin B-type lectin domain.

ドメイン

C-type lectin domains 3 to 8 are not required for calcium-dependent binding of mannose, fucose and N-acetylglucosamine. C-type lectin domain 2 is responsible for sugar-binding in a calcium-dependent manner.

Fibronectin type-II domain mediates collagen-binding.

Ricin B-type lectin domain contacts with the second C-type lectin domain.

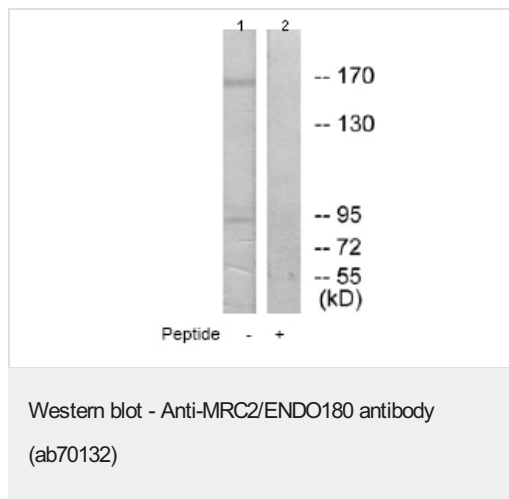
翻訳後修飾

N-glycosylated.

細胞内局在

Membrane.

画像



All lanes : Anti-MRC2/ENDO180 antibody (ab70132) at 1/500 dilution

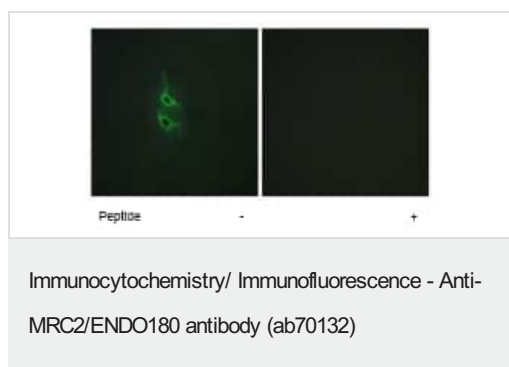
Lane 1 : 293 cell extracts

Lane 2 : 293 cell extracts with immunising peptide at 5 µg

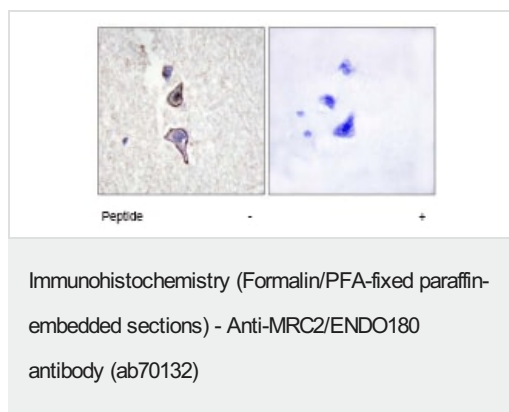
Lysates/proteins at 5 µg per lane.

Predicted band size: 167 kDa

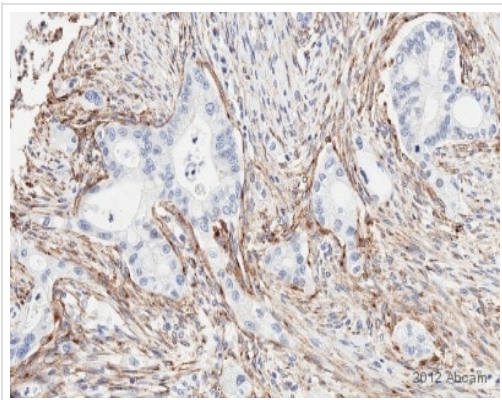
Observed band size: 167 kDa



ab70132, at a 1/500 dilution, staining MRC2/ENDO180 in HepG2 cells by Immunofluorescence, in the absence or presence of the immunising peptide.



ab70132, at a 1/50 dilution, staining MRC2/ENDO180 in paraffin embedded human brain tissue by Immunohistochemistry, in the absence or presence of the immunising peptide.



Immunohistochemistry (Formalin/PFA-fixed paraffin-embedded sections) - Anti-MRC2/ENDO180 antibody (ab70132)

This image is courtesy of an anonymous Abreview

ab70132 staining MRC2/ENDO180 in Human pancreatic cancer tissue sections by Immunohistochemistry (IHC-P - paraformaldehyde-fixed, paraffin-embedded sections). Tissue was fixed with formaldehyde and blocked with Inhibitor CM for 4 minutes at 37°C; antigen retrieval was by heat mediation in Tris/Borate/EDTA buffer pH 8. Samples were incubated with primary antibody (1/50) for 32 minutes at 37°C. An undiluted HRP-conjugated Goat anti-rabbit IgG polyclonal was used as the secondary antibody.

Please note: All products are "FOR RESEARCH USE ONLY. NOT FOR USE IN DIAGNOSTIC PROCEDURES"

Our Abpromise to you: Quality guaranteed and expert technical support

- Replacement or refund for products not performing as stated on the datasheet
- Valid for 12 months from date of delivery
- Response to your inquiry within 24 hours
- We provide support in Chinese, English, French, German, Japanese and Spanish
- Extensive multi-media technical resources to help you
- We investigate all quality concerns to ensure our products perform to the highest standards

If the product does not perform as described on this datasheet, we will offer a refund or replacement. For full details of the Abpromise, please visit <https://www.abcam.co.jp/abpromise> or contact our technical team.

Terms and conditions

- Guarantee only valid for products bought direct from Abcam or one of our authorized distributors