

Anti-MPP5/Pals1 antibody ab20511

★★★★★ [1 Abreviews](#) [画像数 1](#)

製品の概要

製品名	Anti-MPP5/Pals1 antibody
製品の詳細	Goat polyclonal to MPP5/Pals1
由来種	Goat
アプリケーション	適用あり: IHC-P, WB
種交差性	交差種: Human
免疫原	Synthetic peptide corresponding to Human MPP5/Pals1 aa 174-187 (N terminal). Sequence: NKASPPFPLISNAQ Run BLAST with Run BLAST with
ポジティブ・コントロール	Human Brain lysate
特記事項	<p>The Life Science industry has been in the grips of a reproducibility crisis for a number of years. Abcam is leading the way in addressing this with our range of recombinant monoclonal antibodies and knockout edited cell lines for gold-standard validation. Please check that this product meets your needs before purchasing.</p> <p>If you have any questions, special requirements or concerns, please send us an inquiry and/or contact our Support team ahead of purchase. Recommended alternatives for this product can be found below, along with publications, customer reviews and Q&As</p>

製品の特性

製品の状態	Liquid
保存方法	Shipped at 4°C. Upon delivery aliquot and store at -20°C. Avoid freeze / thaw cycles.
バッファー	pH: 7.30 Preservative: 0.02% Sodium azide Constituents: Tris buffered saline, 0.5% BSA
精製度	Immunogen affinity purified
ポリ/モノ	ポリクローナル
アイソタイプ	IgG

アプリケーション

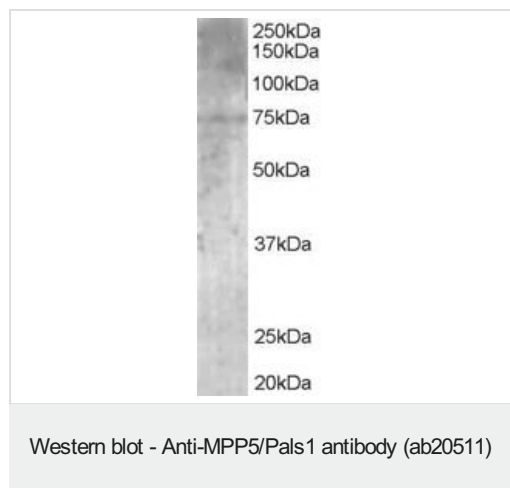
The Abpromise guarantee **Abpromise保証は、** 次のテスト済みアプリケーションにおけるab20511の使用に適用されます
アプリケーションノートには、推奨の開始希釈率がありますが、適切な希釈率につきましてはご検討ください。

アプリケーション	Abreviews	特記事項
IHC-P		Use a concentration of 5 µg/ml.
WB		Use a concentration of 1 - 3 µg/ml. Detects a band of approximately 75 kDa (predicted molecular weight: 77 kDa). 1 hour primary incubation is recommended for this product.

ターゲット情報

機能	May play a role in tight junctions biogenesis and in the establishment of cell polarity in epithelial cells. May modulate SC6A1/GAT1-mediated GABA uptake by stabilizing the transporter. Required for localization of EZR to the apical membrane of parietal cells and may play a role in the dynamic remodeling of the apical cytoskeleton.
組織特異性	Expressed in the retina (at protein level).
配列類似性	Belongs to the MAGUK family. Contains 1 guanylate kinase-like domain. Contains 2 L27 domains. Contains 1 PDZ (DHR) domain. Contains 1 SH3 domain.
ドメイン	The L27 domain 1 functions in targeting to the tight junctions by binding to INADL. The PDZ domain binds to the C-terminus of SC6A1.
細胞内局在	Cell membrane. Endomembrane system. Cell junction > tight junction. Localized to the tight junctions of epithelial cells and a subset of intracellular vesicles. In the retina, detected at the outer limiting membrane (OLM), apical to the adherens junction (AJ), where it colocalizes with CRB1. Colocalizes with MPP1 in the retina at the outer limiting membrane (OLM). Localized to the Purkinje cell body and axon.

画像



Anti-MPP5/Pals1 antibody (ab20511) at 1 µg/ml + Human brain lysate at 35 µg

Developed using the ECL technique.

Predicted band size: 77 kDa

Observed band size: 75 kDa

Please note: All products are "FOR RESEARCH USE ONLY. NOT FOR USE IN DIAGNOSTIC PROCEDURES"

Our Abpromise to you: Quality guaranteed and expert technical support

- Replacement or refund for products not performing as stated on the datasheet
- Valid for 12 months from date of delivery
- Response to your inquiry within 24 hours

- We provide support in Chinese, English, French, German, Japanese and Spanish
- Extensive multi-media technical resources to help you
- We investigate all quality concerns to ensure our products perform to the highest standards

If the product does not perform as described on this datasheet, we will offer a refund or replacement. For full details of the Abpromise, please visit <https://www.abcam.co.jp/abpromise> or contact our technical team.

Terms and conditions

- Guarantee only valid for products bought direct from Abcam or one of our authorized distributors