


### Anti-MPP2/DLG2 antibody ab97290

2 References [画像数 1](#)

**医薬用外劇物**

#### 製品の概要

製品名	Anti-MPP2/DLG2 antibody
製品の詳細	Rabbit polyclonal to MPP2/DLG2
由来種	Rabbit
アプリケーション	<b>適用あり:</b> WB
種交差性	交差種: Human 交差が予測される動物種: Mouse, Rat 
免疫原	Recombinant fragment corresponding to Human MPP2/DLG2 aa 112-432. UniProt ID: Q14168 isoform 2 Database link: <a href="#">NP_005365</a>
ポジティブ・コントロール	A549 whole cell lysate; HepG2 and HCT116 cell lysates
特記事項	<p>The Life Science industry has been in the grips of a reproducibility crisis for a number of years. Abcam is leading the way in addressing this with our range of recombinant monoclonal antibodies and knockout edited cell lines for gold-standard validation. Please check that this product meets your needs before purchasing.</p> <p>If you have any questions, special requirements or concerns, please send us an inquiry and/or contact our Support team ahead of purchase. Recommended alternatives for this product can be found below, along with publications, customer reviews and Q&amp;As</p>

#### 製品の特性

製品の状態	Liquid
保存方法	Shipped at 4°C. Upon delivery aliquot. Store at -20°C or -80°C. Avoid freeze / thaw cycle.
バッファー	pH: 7.00 Preservative: 0.01% Thimerosal (merthiolate) Constituents: 1.21% Tris, 0.75% Glycine, 10% Glycerol (glycerin, glycerine)
精製度	Immunogen affinity purified
ポリ/モノ	ポリクローナル
アイソタイプ	IgG

## アプリケーション

### The Abpromise guarantee

**Abpromise保証は、**次のテスト済みアプリケーションにおけるab97290の使用に適用されます

アプリケーションノートには、推奨の開始希釈率がありますが、適切な希釈率につきましてはご確認ください。

アプリケーション	Abreviews	特記事項
WB		1/500 - 1/3000. Predicted molecular weight: 62 kDa.

## ターゲット情報

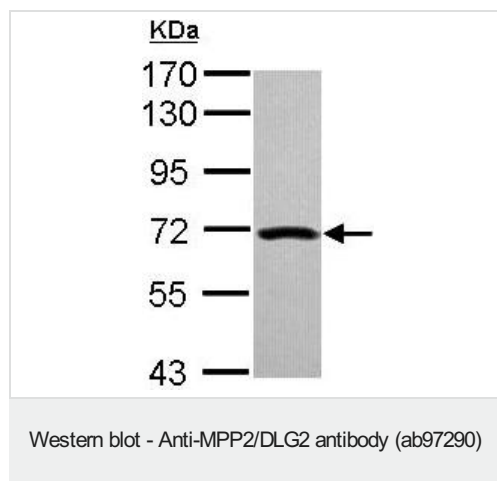
### 関連性

MPP2/DLG2 (Palmitoylated membrane protein 2) is a member of a family of membrane associated proteins termed MAGUKs (membrane associated guanylate kinase homologs). These proteins interact with the cytoskeleton and regulate cell proliferation, signaling pathways, and intracellular junctions. MPP2/DLG2 contains a conserved sequence, called the SH3 (src homology 3) motif, found in several other proteins that associate with the cytoskeleton and are suspected to play important roles in signal transduction.

### 細胞内局在

Cell Membrane; integral membrane protein

## 画像



Anti-MPP2/DLG2 antibody (ab97290) at 1/1000 dilution + A549 whole cell lysate at 30 µg

**Predicted band size:** 62 kDa

7.5% SDS PAGE

**Please note:** All products are "FOR RESEARCH USE ONLY. NOT FOR USE IN DIAGNOSTIC PROCEDURES"

## Our Abpromise to you: Quality guaranteed and expert technical support

- Replacement or refund for products not performing as stated on the datasheet
- Valid for 12 months from date of delivery
- Response to your inquiry within 24 hours
- We provide support in Chinese, English, French, German, Japanese and Spanish
- Extensive multi-media technical resources to help you
- We investigate all quality concerns to ensure our products perform to the highest standards

If the product does not perform as described on this datasheet, we will offer a refund or replacement. For full details of the Abpromise,

please visit <https://www.abcam.co.jp/abpromise> or contact our technical team.

#### **Terms and conditions**

---

- Guarantee only valid for products bought direct from Abcam or one of our authorized distributors