


Anti-MPP1 antibody ab96255

1 References [画像数 2](#)

医薬用外劇物

製品の概要

製品名	Anti-MPP1 antibody
製品の詳細	Rabbit polyclonal to MPP1
由来種	Rabbit
アプリケーション	適用あり: WB, IHC-P
種交差性	交差種: Human 交差が予測される動物種: Mouse, Rabbit, Cow 
免疫原	Recombinant fragment containing a sequence corresponding to a region within amino acids 214-398 of Human MPP1 (NP_002427).
ポジティブ・コントロール	HeLa whole cell lysate, Cal27 xenograft; 293T, A431, H1299, HepG2, Molt-4 and Raji cell lysates
特記事項	<p>The Life Science industry has been in the grips of a reproducibility crisis for a number of years. Abcam is leading the way in addressing this with our range of recombinant monoclonal antibodies and knockout edited cell lines for gold-standard validation. Please check that this product meets your needs before purchasing.</p> <p>If you have any questions, special requirements or concerns, please send us an inquiry and/or contact our Support team ahead of purchase. Recommended alternatives for this product can be found below, along with publications, customer reviews and Q&As</p>

製品の特性

製品の状態	Liquid
保存方法	Shipped at 4°C. Upon delivery aliquot. Store at -20°C or -80°C. Avoid freeze / thaw cycle.
バッファー	pH: 7.00 Preservative: 0.01% Thimerosal (merthiolate) Constituents: 1.21% Tris, 0.75% Glycine, 10% Glycerol (glycerin, glycerine)
精製度	Immunogen affinity purified
ポリ/モノ	ポリクローナル
アイソタイプ	IgG

アプリケーション

The Abpromise guarantee

Abpromise保証は、次のテスト済みアプリケーションにおけるab96255の使用に適用されます

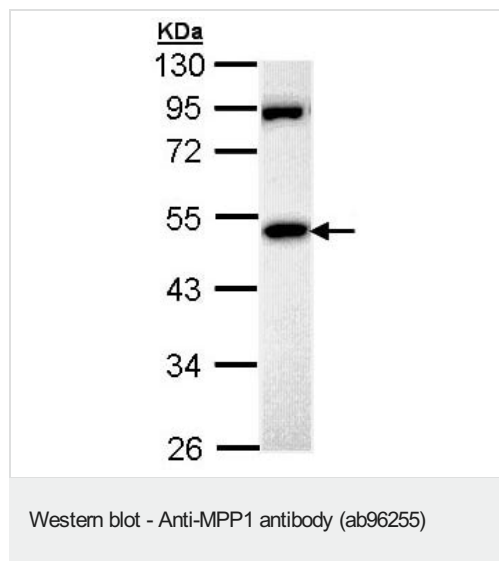
アプリケーションノートには、推奨の開始希釈率がありますが、適切な希釈率につきましてはご確認ください。

アプリケーション	Abreviews	特記事項
WB		1/500 - 1/3000. Predicted molecular weight: 52 kDa.
IHC-P		1/100 - 1/500.

ターゲット情報

機能	Essential regulator of neutrophil polarity. Regulates neutrophil polarization by regulating AKT1 phosphorylation through a mechanism that is independent of PIK3CG activity.
組織特異性	Ubiquitous.
配列類似性	Belongs to the MAGUK family. Contains 1 guanylate kinase-like domain. Contains 1 PDZ (DHR) domain. Contains 1 SH3 domain.
翻訳後修飾	Extensively palmitoylated.
細胞内局在	Membrane. Cell projection > stereocilium. Colocalizes with WHRN at stereocilium tip during hair cell development (By similarity). Colocalizes with MPP5 in the retina, at the outer limiting membrane (OLM). Colocalizes with WHRN in the retina, at the outer limiting membrane (OLM), outer plexiform layer (OPL), basal bodies and at the connecting cilium (CC). Colocalizes with NF2 in non-myelin-forming Schwann cells.

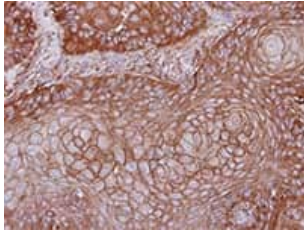
画像



Anti-MPP1 antibody (ab96255) at 1/1000 dilution + HeLa whole cell lysate at 30 µg

Predicted band size: 52 kDa

10% SDS-PAGE



Immunohistochemical analysis of paraffin-embedded Cal27 xenograft, using ab96255 antibody at 1/100 dilution.

Immunohistochemistry (Formalin/PFA-fixed paraffin-embedded sections) - Anti-MPP1 antibody (ab96255)

Please note: All products are "FOR RESEARCH USE ONLY. NOT FOR USE IN DIAGNOSTIC PROCEDURES"

Our Abpromise to you: Quality guaranteed and expert technical support

- Replacement or refund for products not performing as stated on the datasheet
- Valid for 12 months from date of delivery
- Response to your inquiry within 24 hours
- We provide support in Chinese, English, French, German, Japanese and Spanish
- Extensive multi-media technical resources to help you
- We investigate all quality concerns to ensure our products perform to the highest standards

If the product does not perform as described on this datasheet, we will offer a refund or replacement. For full details of the Abpromise, please visit <https://www.abcam.co.jp/abpromise> or contact our technical team.

Terms and conditions

- Guarantee only valid for products bought direct from Abcam or one of our authorized distributors