


### Anti-MPG/AAG antibody [EPR10959(B)] ab155092

KO 評価済 リコンビナント RabMAb

★★★★★ [7 Abreviews](#) [4 References](#) [画像数 10](#)

#### 製品の概要

製品名	Anti-MPG/AAG antibody [EPR10959(B)]
製品の詳細	Rabbit monoclonal [EPR10959(B)] to MPG/AAG
由来種	Rabbit
アプリケーション	<b>適用あり:</b> WB, IHC-P, Flow Cyt (Intra)
種交差性	<b>交差種:</b> Mouse, Human <b>交差が予測される動物種:</b> Rat 
免疫原	Synthetic peptide. This information is proprietary to Abcam and/or its suppliers.
ポジティブ・コントロール	HeLa, 293T and Jurkat cell lysates; Human testis tissue and ovarian carcinoma tissue.
特記事項	This product is a recombinant monoclonal antibody, which offers several advantages including: <ul style="list-style-type: none"><li>- High batch-to-batch consistency and reproducibility</li><li>- Improved sensitivity and specificity</li><li>- Long-term security of supply</li><li>- Animal-free production</li></ul> For more information <a href="#">see here</a> . Our RabMAb <sup>®</sup> technology is a patented hybridoma-based technology for making rabbit monoclonal antibodies. For details on our patents, please refer to <a href="#">RabMAb<sup>®</sup> patents</a> .

#### 製品の特性

製品の状態	Liquid
保存方法	Shipped at 4°C. Store at +4°C short term (1-2 weeks). Upon delivery aliquot. Store at -20°C. Avoid freeze / thaw cycle.
バッファー	pH: 7.2 Preservative: 0.01% Sodium azide Constituents: 9% PBS, 40% Glycerol (glycerin, glycerine), 0.05% BSA, 50% Tissue culture supernatant
精製度	Protein A purified
ポリ/モノ	モノクローナル
クローン名	EPR10959(B)

アプリケーション

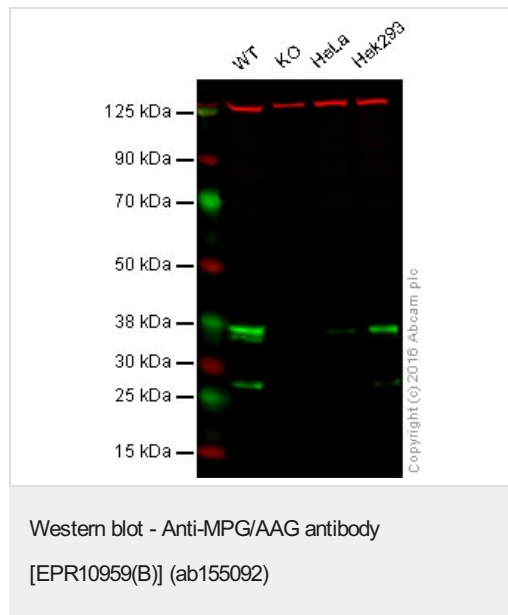
The Abpromise guarantee **Abpromise保証は、次のテスト済みアプリケーションにおけるab155092の使用に適用されず**  
 アプリケーションノートには、推奨の開始希釈率がありますが、適切な希釈率につきましてはご検討ください。

アプリケーション	Abreviews	特記事項
WB	★★★★★ (3)	1/10000 - 1/50000. Predicted molecular weight: 33 kDa.
IHC-P		1/50 - 1/100. Perform heat mediated antigen retrieval before commencing with IHC staining protocol.
Flow Cyt (Intra)		Use at an assay dependent concentration.

ターゲット情報

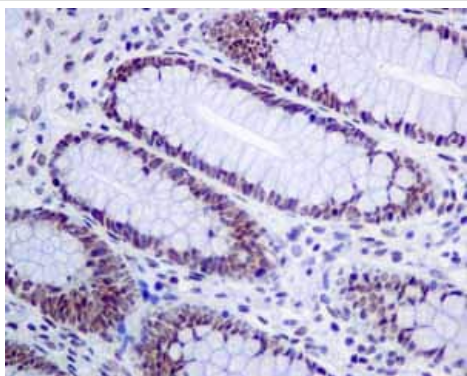
機能	Hydrolysis of the deoxyribose N-glycosidic bond to excise 3-methyladenine, and 7-methylguanine from the damaged DNA polymer formed by alkylation lesions.
配列類似性	Belongs to the DNA glycosylase MPG family.
細胞内局在	Nucleus.

画像



**Lane 1:** Wild-type HAP1 cell lysate (20 µg)  
**Lane 2:** MPG/AAG knockout HAP1 cell lysate (20 µg)  
**Lane 3:** HeLa cell lysate (20 µg)  
**Lane 4:** HEK293 cell lysate (20 µg)  
**Lanes 1 - 4:** Merged signal (red and green). Green - ab155092 observed at 35 kDa. Red - loading control, **ab8245**.

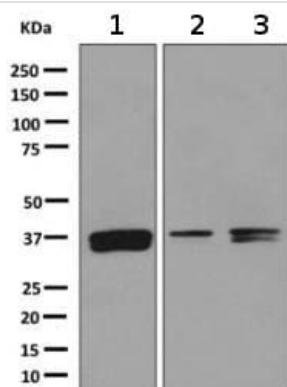
ab155092 was shown to specifically react with MPG/AAG when MPG/AAG knockout samples were used. Wild-type and MPG/AAG knockout samples were subjected to SDS-PAGE. Ab155092 and **ab8245** (loading control to GAPDH) were diluted at 1/10,000 and 1/10,000 dilution respectively and incubated overnight at 4C. Blots were developed with IRDye® 800CW Goat anti-Rabbit IgG (H + L) and IRDye® 680 Goat anti-Mouse IgG (H + L) secondary antibodies at 1/10,000 dilution for 1 hour at room temperature before imaging.



Immunohistochemistry (Formalin/PFA-fixed paraffin-embedded sections) - Anti-MPG/AAG antibody [EPR10959(B)] (ab155092)

Immunohistochemical analysis of paraffin embedded Human normal colon tissue using ab155092 showing +ve staining.

Perform heat mediated antigen retrieval before commencing with IHC staining protocol.



Western blot - Anti-MPG/AAG antibody [EPR10959(B)] (ab155092)

**All lanes** : Anti-MPG/AAG antibody [EPR10959(B)] (ab155092) at 1/10000 dilution

**Lane 1** : HeLa cell lysate

**Lane 2** : 293T cell lysate

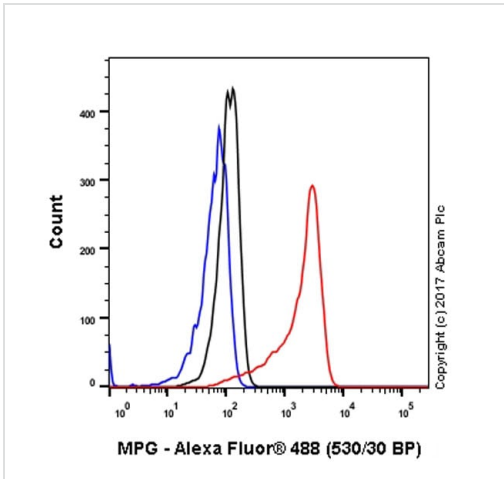
**Lane 3** : Jurkat cell lysate

Lysates/proteins at 10 µg per lane.

#### Secondary

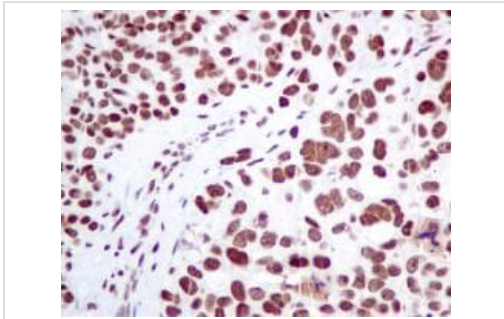
**All lanes** : Goat anti-rabbit HRP at 1/2000 dilution

**Predicted band size:** 33 kDa



Flow Cytometry (Intracellular) - Anti-MPG/AAG antibody [EPR10959(B)] (ab155092)

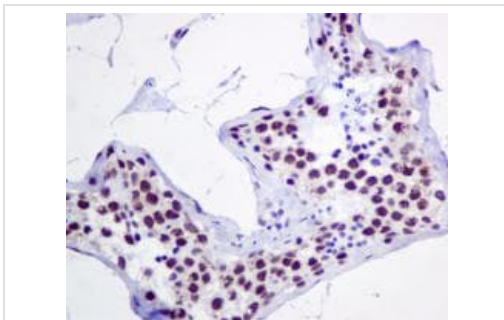
Intracellular Flow Cytometry analysis of HeLa (human cervix adenocarcinoma) cells labeling MPG/AAG with unpurified ab155092 at 1/20 dilution (10ug/ml) (red). Cells were fixed with 4% paraformaldehyde and permeabilised with 90% methanol. A Goat anti rabbit IgG (Alexa Fluor® 488) (**ab150077**) (1/2000 dilution) was used as the secondary antibody. Rabbit monoclonal IgG (Black) (**ab172730**) was used as the isotype control, cells without incubation with primary antibody and secondary antibody (Blue) were used as the unlabeled control.



Immunohistochemistry (Formalin/PFA-fixed paraffin-embedded sections) - Anti-MPG/AAG antibody [EPR10959(B)] (ab155092)

Immunohistochemical analysis of paraffin-embedded Human ovarian carcinoma tissue labeling MPG/AAG with ab155092 at 1/50 dilution.

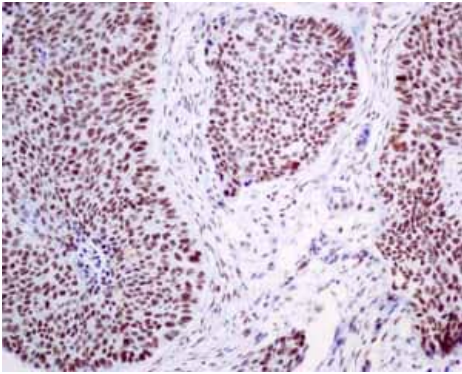
Perform heat mediated antigen retrieval before commencing with IHC staining protocol.



Immunohistochemistry (Formalin/PFA-fixed paraffin-embedded sections) - Anti-MPG/AAG antibody [EPR10959(B)] (ab155092)

Immunohistochemical analysis of paraffin-embedded Human testis tissue labeling MPG/AAG with ab155092 at 1/50 dilution.

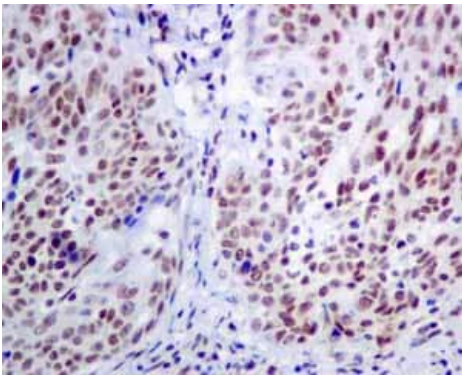
Perform heat mediated antigen retrieval before commencing with IHC staining protocol.



Immunohistochemistry (Formalin/PFA-fixed paraffin-embedded sections) - Anti-MPG/AAG antibody [EPR10959(B)] (ab155092)

Immunohistochemical analysis of paraffin embedded Human lung adenocarcinoma tissue using ab155092 showing +ve staining.

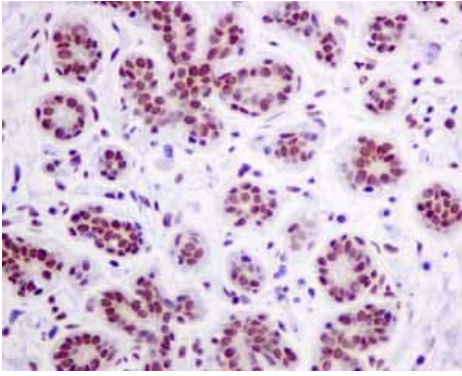
Perform heat mediated antigen retrieval before commencing with IHC staining protocol.



Immunohistochemistry (Formalin/PFA-fixed paraffin-embedded sections) - Anti-MPG/AAG antibody [EPR10959(B)] (ab155092)

Immunohistochemical analysis of paraffin embedded Human cervical carcinoma tissue using ab155092 showing +ve staining.

Perform heat mediated antigen retrieval before commencing with IHC staining protocol.



Immunohistochemical analysis of paraffin embedded Human normal breast tissue using ab155092 showing +ve staining.

Perform heat mediated antigen retrieval before commencing with IHC staining protocol.

Immunohistochemistry (Formalin/PFA-fixed paraffin-embedded sections) - Anti-MPG/AAG antibody [EPR10959(B)] (ab155092)

### Why choose a recombinant antibody?



Anti-MPG/AAG antibody [EPR10959(B)] (ab155092)

**Please note:** All products are "FOR RESEARCH USE ONLY. NOT FOR USE IN DIAGNOSTIC PROCEDURES"

### Our Abpromise to you: Quality guaranteed and expert technical support

- Replacement or refund for products not performing as stated on the datasheet
- Valid for 12 months from date of delivery
- Response to your inquiry within 24 hours
- We provide support in Chinese, English, French, German, Japanese and Spanish
- Extensive multi-media technical resources to help you
- We investigate all quality concerns to ensure our products perform to the highest standards

If the product does not perform as described on this datasheet, we will offer a refund or replacement. For full details of the Abpromise, please visit <https://www.abcam.co.jp/abpromise> or contact our technical team.

### Terms and conditions

- Guarantee only valid for products bought direct from Abcam or one of our authorized distributors