


Anti-MPC1 antibody ab74871

★☆☆☆☆ **1 Abreviews** **6 References** 画像数 **3**

製品の概要

製品名	Anti-MPC1 antibody
製品の詳細	Rabbit polyclonal to MPC1
由来種	Rabbit
アプリケーション	適用あり: WB, IHC-P, ICC/IF
種交差性	交差種: Human 交差が予測される動物種: Mouse, Rat 
免疫原	Synthetic peptide corresponding to Human MPC1 (internal sequence).
ポジティブ・コントロール	WB: extracts from COLO and HeLa cells IHC-P: human heart tissue ICC/IF: A549 cells
特記事項	<p>The Life Science industry has been in the grips of a reproducibility crisis for a number of years. Abcam is leading the way in addressing this with our range of recombinant monoclonal antibodies and knockout edited cell lines for gold-standard validation. Please check that this product meets your needs before purchasing.</p> <p>If you have any questions, special requirements or concerns, please send us an inquiry and/or contact our Support team ahead of purchase. Recommended alternatives for this product can be found below, along with publications, customer reviews and Q&As</p>

製品の特性

製品の状態	Liquid
保存方法	Shipped at 4°C. Upon delivery aliquot and store at -20°C. Avoid freeze / thaw cycles.
バッファー	<p>pH: 7.40</p> <p>Preservative: 0.02% Sodium azide</p> <p>Constituents: 50% Glycerol (glycerin, glycerine), 0.87% Sodium chloride, PBS</p> <p>Without Mg²⁺ and Ca²⁺</p>
精製度	Immunogen affinity purified
ポリ/モノ	ポリクローナル
アイソタイプ	IgG

アプリケーション

The Abpromise guarantee

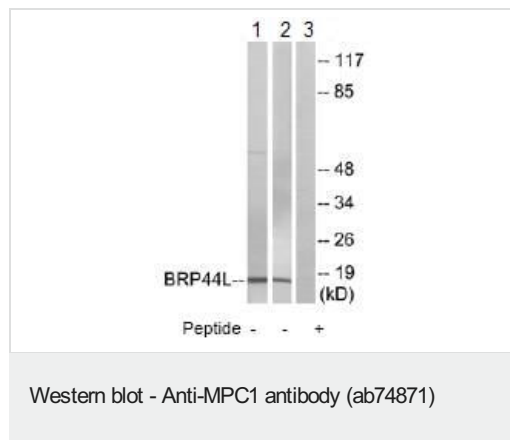
Abpromise保証は、次のテスト済みアプリケーションにおけるab74871の使用に適用されます
アプリケーションノートには、推奨の開始希釈率がありますが、適切な希釈率につきましてはご検討ください。

アプリケーション	Abreviews	特記事項
WB		1/500 - 1/1000. Predicted molecular weight: 12 kDa.
IHC-P		Use at an assay dependent concentration.
ICC/IF		1/500 - 1/1000.

ターゲット情報

機能	Mediates the uptake of pyruvate into mitochondria.
関連疾患	Mitochondrial pyruvate carrier deficiency
配列類似性	Belongs to the mitochondrial pyruvate carrier (MPC) (TC 2.A.105) family.
細胞内局在	Mitochondrion inner membrane.

画像



All lanes : Anti-MPC1 antibody (ab74871) at 1/500 dilution

Lane 1 : extracts from COLO cells

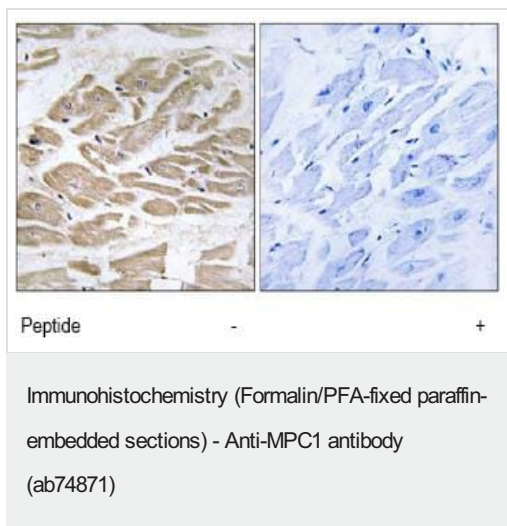
Lane 2 : extracts from HeLa cells

Lane 3 : extracts from COLO cells with immunizing peptide at 10 µg

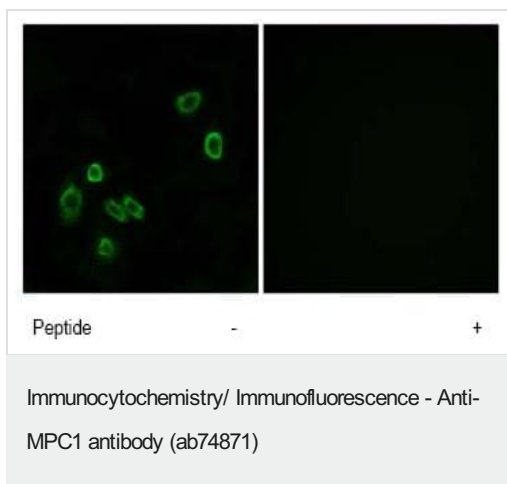
Lysates/proteins at 20 µg per lane.

Predicted band size: 12 kDa

Observed band size: 12 kDa



ab74871, at a 1/50 dilution, staining MPC1 in paraffin embedded human heart tissue sections by Immunohistochemistry in the absence (left image) or presence (right image) of the immunizing peptide.



ab74871, at a 1/500 dilution, staining MPC1 in A549 cells by Immunofluorescence in the absence (left image) or presence (right image) of the immunizing peptide.

Please note: All products are "FOR RESEARCH USE ONLY. NOT FOR USE IN DIAGNOSTIC PROCEDURES"

Our Abpromise to you: Quality guaranteed and expert technical support

- Replacement or refund for products not performing as stated on the datasheet
- Valid for 12 months from date of delivery
- Response to your inquiry within 24 hours
- We provide support in Chinese, English, French, German, Japanese and Spanish
- Extensive multi-media technical resources to help you
- We investigate all quality concerns to ensure our products perform to the highest standards

If the product does not perform as described on this datasheet, we will offer a refund or replacement. For full details of the Abpromise, please visit <https://www.abcam.co.jp/abpromise> or contact our technical team.

Terms and conditions

- Guarantee only valid for products bought direct from Abcam or one of our authorized distributors