

Anti-MOX1/MEOX1 antibody ab105349

★★★★★ [1 Abreviews](#) [3 References](#) [画像数 1](#)

製品の概要

| | |
|--------------|---|
| 製品名 | Anti-MOX1/MEOX1 antibody |
| 製品の詳細 | Rabbit polyclonal to MOX1/MEOX1 |
| 由来種 | Rabbit |
| 特異性 | Predicted to not crossreact with MOX2. |
| アプリケーション | 適用あり: WB |
| 種交差性 | 交差種: Human |
| 免疫原 | Synthetic peptide corresponding to Human MOX1/MEOX1 (internal sequence). Database link: P50221 |
| ポジティブ・コントロール | WB: Human liver tissue lysate. |
| 特記事項 | <p>The Life Science industry has been in the grips of a reproducibility crisis for a number of years. Abcam is leading the way in addressing this with our range of recombinant monoclonal antibodies and knockout edited cell lines for gold-standard validation. Please check that this product meets your needs before purchasing.</p> <p>If you have any questions, special requirements or concerns, please send us an inquiry and/or contact our Support team ahead of purchase. Recommended alternatives for this product can be found below, along with publications, customer reviews and Q&As</p> |

製品の特性

| | |
|--------|---|
| 製品の状態 | Liquid |
| 保存方法 | Shipped at 4°C. Store at +4°C. |
| バッファー | pH: 7.2 Preservative: 0.02% Sodium azide Constituent: PBS |
| 精製度 | Immunogen affinity purified |
| ポリ/モノ | ポリクローナル |
| アイソタイプ | IgG |

アプリケーション

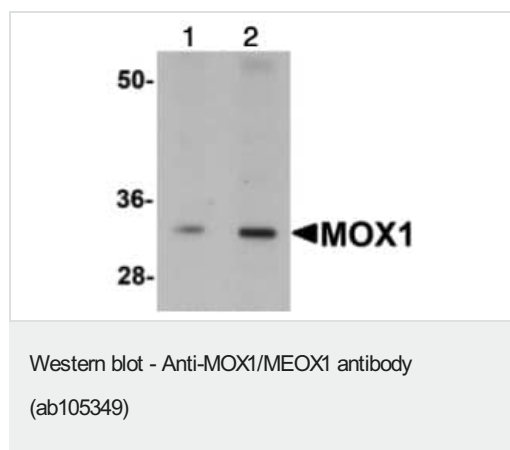
The Abpromise guarantee **Abpromise保証は、次のテスト済みアプリケーションにおけるab105349の使用に適用されず**
アプリケーションノートには、推奨の開始希釈率がありますが、適切な希釈率につきましてはご検討ください。

| アプリケーション | Abreviews | 特記事項 |
|----------|-----------|---|
| WB | | Use a concentration of 1 - 2 µg/ml. Predicted molecular weight: 28 kDa. |

ターゲット情報

| | |
|--------------|---|
| 機能 | Mesodermal transcription factor that plays a key role in somitogenesis and is specifically required for sclerotome development. Required for maintenance of the sclerotome polarity and formation of the cranio-cervical joints (PubMed:23290072, PubMed:24073994). Binds specifically to the promoter of target genes and regulates their expression. Activates expression of NKX3-2 in the sclerotome. Activates expression of CDKN1A and CDKN2A in endothelial cells, acting as a regulator of vascular cell proliferation. While it activates CDKN1A in a DNA-dependent manner, it activates CDKN2A in a DNA-independent manner. Required for hematopoietic stem cell (HSCs) induction via its role in somitogenesis: specification of HSCs occurs via the deployment of a specific endothelial precursor population, which arises within a sub-compartment of the somite named endotome. |
| 関連疾患 | Klippel-Feil syndrome 2, autosomal recessive |
| 配列類似性 | Contains 1 homeobox DNA-binding domain. |
| 細胞内局在 | Nucleus. Cytoplasm. Localizes predominantly in the nucleus. |

画像



Lane 1 : Anti-MOX1/MEOX1 antibody (ab105349) at 1 µg/ml

Lane 2 : Anti-MOX1/MEOX1 antibody (ab105349) at 2 µg/ml

All lanes : Human liver tissue lysate

Lysates/proteins at 15 µg per lane.

Predicted band size: 28 kDa

Please note: All products are "FOR RESEARCH USE ONLY. NOT FOR USE IN DIAGNOSTIC PROCEDURES"

Our Abpromise to you: Quality guaranteed and expert technical support

- Replacement or refund for products not performing as stated on the datasheet
- Valid for 12 months from date of delivery
- Response to your inquiry within 24 hours

- We provide support in Chinese, English, French, German, Japanese and Spanish
- Extensive multi-media technical resources to help you
- We investigate all quality concerns to ensure our products perform to the highest standards

If the product does not perform as described on this datasheet, we will offer a refund or replacement. For full details of the Abpromise, please visit <https://www.abcam.co.jp/abpromise> or contact our technical team.

Terms and conditions

- Guarantee only valid for products bought direct from Abcam or one of our authorized distributors